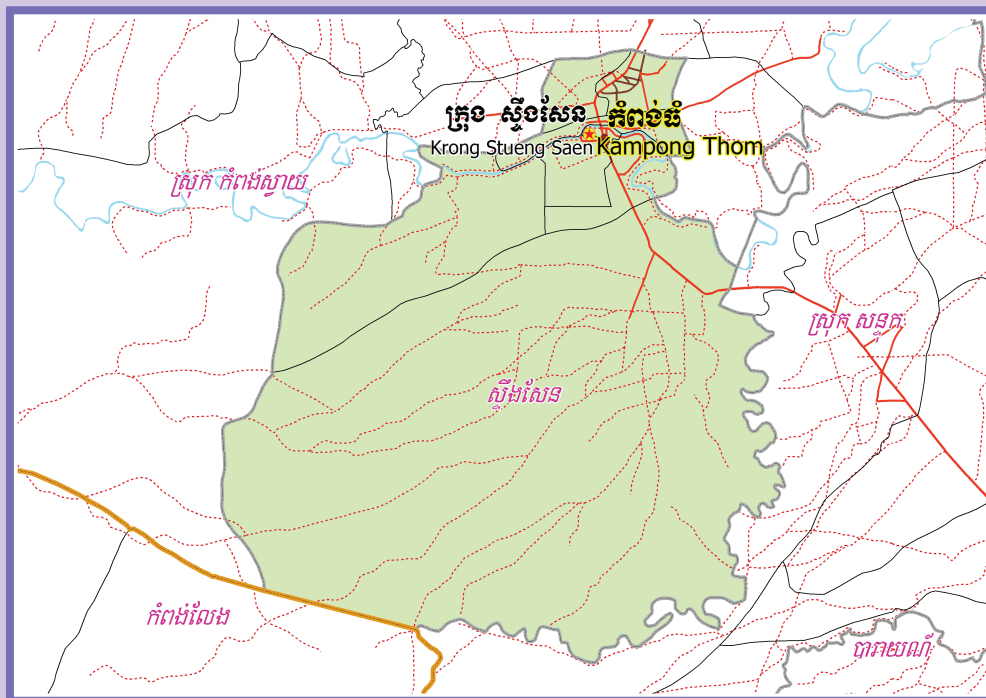


KINGDOM OF CAMBODIA
Nation Religion King



**National Committee for Sub-National
Democratic Development (NCDD)**



STUENG SAEN KRONG DATA BOOK 2009

Krong Code Nr: 603
Kampong Thom Province

October 2009

Stueng Saen Krong Data Book 2009

District Code Nr: 603

Kampong Thom Province

Table of Contents

List of Abbreviations	i
Glossary.....	ii
Preface	vi
Introduction	vii
SECTION A: GEOGRAPHY	1
1 Administration and Infrastructure.....	3
2 Land Use and Natural Resources.....	5
3 Geography	7
3.1 Land Area	7
3.2 Distances between Offices	7
SECTION B: DISTRICT PROFILE	9
1 General Information	11
1.1 Population of the District.....	11
1.2 Occupations	12
1.3 Property	14
2 Infrastructure and Economy.....	15
2.1 Roads in meters over 3 years.....	15
2.2 Sewerage Pipes in meters over 3 years.....	16
2.3 Drainage and Bridges	16
2.4 Services in the District	16
2.5 Agriculture.....	17
3 Social Aspects	27
3.1 Education	27
3.2 Health.....	33
3.3 Water and Sanitation	35
3.4 Vulnerable groups.....	39
3.5 Migration	41
4 Natural Resources and Environment (NRE).....	43
4.1 Families involved with NRE issues over 3 years	43
4.2 Percentage of Families involved with Natural Resource issues, by Commune, for 2008	43
4.3 Percentage Houses with access to Garbage collection and Families affected by environmental Pollution, by Commune, for 2008	43
4.4 Percentage Families using chemical Fertilizer and chemical Pesticides, by Commune, for 2008 ..	44
5 Administration and Security	44

5.1	Birth Registration across 3 years.....	44
5.2	Number of unregistered Infants born in 2008, by Commune	44
5.3	Registered criminal Cases over 3 years	44
5.4	Registered criminal Cases per 10,000 people, by Commune, for 2008.....	45
5.5	Number of registered Land Disputes, by Commune, in 2008	45
6	Gender	46
6.1	Registered Domestic Violence over 3 years.....	46
6.2	Percentage of registered cases of Families experiencing domestic Violence, by Commune, in 2008	46
6.3	Women's involvement over 3 years.....	46
6.4	Percentage of Female Participants in Civil Society and of 18-60 year women with uncertain Jobs, by Commune, in 2008	47
6.5	Female-headed Households over 3 years.....	47
6.6	Percentage female-headed Households and with Children of less than 5 years old, by Commune, in 2008	47
7	Indigenous People in the District	48
7.1	Ethnic Minorities in the District over 3 years.....	48
7.2	Other Minorities in the District over 3 years.....	48
	SECTION C: PLANS AND PROJECTS	49
8	Priorities and Plans	51
8.1	Priorities of Commune Councils for 2009 in the District by Sector	51
8.2	Temporary Agreements by Commune, for 2009	56
8.3	Outputs, estimated and actual costs of C/S Fund Projects between 2005 and 2008, by Commune	62
8.4	Total Expenditure on C/S Fund Projects by sector and commune between 2005 and 2008.....	64
8.5	Actual 2009 C/S Fund projects by Commune	64
9	District level Projects from 2006 to 2009	65
9.1	District Initiative Infrastructure Projects from 2006 to 2009	65
9.2	District Initiative Service Projects from 2006 to 2009	65
9.3	Inter Commune Council Projects in 2008 and 2009	66
9.4	Other Projects in 2008 and 2009	66
	SECTION D: SERVICES AND ORGANIZATIONS	69
10	Infrastructure.....	71
10.1	Length of and Expenditure on Roads in 2008, by District	71
10.2	Scale of and Expenditure on Irrigation in 2008, by District.....	71
10.3	Power Supply in 2008, by District	72
11	Health Facilities.....	73

11.1 Health Facilities in the Province, by Operational District.....	73
11.2 Health Facilities and Staff in the province, by Operational District.....	73
11.3 Deliveries in 2007 in the Province, by Operational District.....	75
12 Education	76
12.1 Schools, Classes, Students, Staff, for for all levels, for 2007/2008 by District.....	76
12.2 Characteristics of Schools and School Principals for 2007/2008 by Commune	76
12.3 Enrolment by Level of Education, 2006/2007 by Commune	77
12.4 Enrolment by Level of Education, 2007/2008 by Commune	77
12.5 Aspects of Enrolment for 2007/2008 by Commune.....	77
12.6 School Buildings for all schools in the District for 2007/2008, by Commune	78
12.7 Conditions of Classrooms and Existence of Separate School Office and Library, by Commune	78
12.8 Community Participation and Financing across all schools in the District for 2007/2008 by Commune	79
12.9 Percentage Student Flow Rates and Graduation by level 2006/2007, by Commune	79
13 Staff and Resources at the District	80
13.1 District Councilors elected in 2009	80
13.2 Committees of the Council.....	80
13.3 Board of Governors.....	81
13.4 Offices under Sala Krong, Sala Srok and Sala Khan	81
13.5 Municipality/District/Khan line offices.....	81
13.6 Properties and Equipment of District Administration	82
13.7 Registered Revenue of the District Administration in 2008	83
13.8 Services in the District	83
13.9 Civil Society Organizations active in the District.....	83
13.10 Private Sector Organizations.....	85
SECTION E: POVERTY DATA	87
14 Data on Poverty	89
14.1 Predicted Poverty Rates for 2009, by commune	89
14.2 Poverty data from survey.....	89

List of Abbreviations

#	Number
AGR	Agriculture
BR	Birth Registration
C. Pilot	Piloted Commune
C/S	Commune / Sangkat
CBO	Community-Based Organization
CDB	Commune Database
CDPD	Commune Development and Planning Database
CIP	Commune Investment plan
CLTS	Community Led-Total Sanitation
Comm.	Commune
Com Cov	Commune Covered
CPA	Complementary Package of Activities
CPS	Community Preschool
CCWC	Commune Committees for Women and Children
DANIDA	Danish International Development Agency
DDLG	Democratic Development and Local Governance Project (EC-UNDP)
DFID	Department For International Development (UK)
DIP	District Initiative Project
DIS	District Information System
District PDRD	District Office of Rural Development
District WP	District Work Plan
DIW	District Integration Workshop
DoLA	Department of Local Administration
Dr	Doctor
DWRM	District Office of Water Resource and Meterology
ECD	Early Childhood education (part of PE)
EMIS	Education Management Information System
Event IC	Celebration of International Days
FDH	Former District Hospital
GTZ	German Society for Technical Cooperation (Gesellschaft für Technische Zusammenarbeit GmbH)
Ha	Hectare
HC	Health Center
HC (NB)	Health Center (no building)
HH	Headed Household
HSI	Intervention for Health
HP	Health Post
HW	Hand Washing
ICC	Inter Commune Council
IFAD	International Fund for Agricultural Development
IND	Industry
Inter-commune	Inter-Commune Project Management Committee or Inter-commune project
IO	International Organization
LASED	Land Allocation for Socio-Economic Development
LGCR	Local Governance for Children's Rights
M&E	Monitoring and Evaluation
MA	Medical Assistant
MoEYS	Ministry of Education, Youth and Sports
MoH	Ministry of Health

MoP	Ministry of Planning
MPA	Minimum Package of Activities
MW1	Primary Midwives
MW2	Secondary Midwives
n/a	Not available
NCD	National Contracts Database
NCDD	National Committee for Sub-National Democratic Development
NGO	Non-Governmental Organization
NRML	Natural Resources Management and Livelihood
NU1	Primary Nurse
NU2	Secondary Nurse
OD	Operational District
ODF	Open Defecation Free
Ope. Costs	Operational Costs
Others	Other Staff
PBW	Public Works
PDoEYS	Provincial Department of Education, Youth and Sport
PDRD	Provincial Department of Rural Development
PDWRM	Provincial Department of Water Resource and Meteorology
PE	Parenting Education
PHAST	Participatory Hygiene and Sanitation Transformation
PHD	Provincial Health Department
PID	Project Information Database
PMC	Project Management Committee
Pop 04-05	Population Covered 2004 or 2005
PSDD	Project to Support Democratic Development through Decentralization and Deconcentration
RRD	Rural Road Development
RH	Referral Hospital
RILGP	Rural Investment and Local Governance Project
RPRP	Rural Poverty Reduction Program
RuLIP	Rural Livelihoods Improvement Program
SIDA	Swedish International Development Cooperation Agency
SPPA	Senior Provincial Program Advisor
TBA	Traditional Birth Attendant
UNDP	United Nations Development Project
UNICEF	United Nations Children's Fund
Vil	Village
Vil Cov	Village Covered
VIL-HC	Distance from Village to Health Center
WASH	Water, Sanitation and Hygiene
WRM	Water Resource and Meteorology

Glossary

C/S Fund: The Commune/Sangkat Fund is established and managed by the Government of Cambodia to provide financial support for development projects and administrative costs of Commune/Sangkat Councils. The amount is determined as a percentage of the National Budget (for 2009: 2.8% over the 2008 budget) and is expected to increase gradually over the years. The total 2009 budget under this fund is \$ 27,643,902 (of which \$ 19,272,170 is for Development Projects and \$ 8,371,731 for Administration). Under the Rural Investment and Local Governance Project the World Bank currently reimburses the costs of development projects if these meet the Bank's criteria.

CDB: the Commune Data Base is a national database, compiled by the Ministry of Planning, on the basis of detailed questionnaires, completed at village and commune level, which are then sent to the Departments of Planning for data entry. The most recent round of data collection took place at the end of 2008 (and is reflected in the District Data Books). Commune, District and Provincial Profiles can be generated from this database and should be available from provincial Departments of Planning.

CDPD: the Commune Development and Planning Database is a database maintained by Departments of Planning and Ministry of Planning, recording proposed activities as determined and prioritized by Commune and Sangkat Councils; the Temporary Agreements between these councils and supporting agencies, as decided at District Integration Workshops and details on projects that actually take place at commune, district and provincial levels.

CIP: The Commune Investment Plan is a rolling three-year plan, developed and decided by the Commune or Sangkat Council. It sets priorities and identifies the projects proposed for the years to come.

Commune and Sangkat (C/S): the Communes (in rural areas) and Sangkats (in urban areas) are the lowest and smallest units of local government. Councils are elected directly, once in five years, for the 1417 Communes and 204 Sangkats. In the C/S there are 14,119 villages, which have Village Chiefs, but don't constitute a formal level of local government.

DIP: the District Initiative Project is jointly supported by the MDLF (Multi-Donor Livelihood Facility (supporting the NRM&L Program)) and PSDD. In 2009 it covers 106 districts, 60% of the total in the country, with a budget of \$ 3.2 million. It is focused on capacity development in planning, democratic development, public competitive procurement, financial management and service delivery.

DIS: The District Information System is a national database maintained by NCDD, recording resources, staff, revenue, infrastructure and equipment available in the 193 Districts and Khans throughout the country. The last update took place in July 2009.

District, Municipality and Khan constitutes the third level of Government in Cambodia. There are 159 rural Districts, 26 Municipalities and 8 Khans of Phnom Penh Capital. They all have Councils which were, for the first time, elected in May 2009, by the Commune/Sangkat Councilors. These councils have a mandate for 5 years.

DIW: District Integration Workshops are held between July and October, to bring Commune/Sangkat Councils, looking for support for their projects, together with the governmental and non-governmental agencies that may provide support.

ICC: Inter Communes Council projects are executed in 10 provinces under the Democratic and Decentralized Local Governance Project (DDLG). This five year project (2006-2010) is executed by Ministry of Interior and funded by the European Commission and UNDP. The project focuses on improving dialogue partnership and accountability; create a network of Commune Councils at the provincial and national level and support and contribute to local area development for poverty reduction. The work under the ICC component supports investments and services formulated through inter-commune dialogue and planning.

MEDiCAM: A non-profit and non-partisan membership organization for NGOs active in Cambodia's health sector. It is the primary networking agency for health-related NGOs.

NCDD: the National Committee for sub-National Democratic Development is the inter-ministerial body charged with the implementation of the Organic Law (a key legislative document, adopted in 2008, outlining the envisaged decentralization). NCDD also channels substantial financial assistance by a number of Development Partners, to projects and programs at various levels. This amounted to over \$ 91 million in 2008. More information at: www.ncdd.gov.kh. This website also provides access to reports, manuals, legal documents, details on projects and more.

OD: the Operational Districts are the districts as defined and used by the Ministry of Health. These do not coincide with the 193 (Administrative) Districts and Khans, as used by all other RGC agencies. The Operational Districts are usually larger, and so there are 77 Operational Districts against 193 administrative Districts and Khans. However they do fit within the boundaries of administrative provinces.

PID: The Project Information Database is the database maintained by NCDD at national and sub national level, to follow all aspects of projects by Commune and Sangkat Councils, including the C/S Fund projects

Provincial Investment Fund (PIF)

The Provincial Investment Fund is allocated to all Provinces and Municipalities according to a population based formula. Part of the fund is earmarked for support to planning activities of the Provincial / Municipal Department of Planning; and to gender mainstreaming activities of the Provincial Department of Women's Affairs. The remaining "un-earmarked PIF" is allocated by PRDC to sectoral technical departments against established criteria and in response to proposals with prioritisation taking into account: priorities formulated by the CS Councils and aggregated by District into District Priority Activities Matrices (DPAM); alignment with national planning and poverty alleviation criteria, complementarity with other planned activities; and performance of the Department concerned in implementation of activities in previous years. With this provisional allocation, the Department then programs activities through the District Integration Process. Finally, the agreed activities, plus support costs amounting to no more than 25% of the total, are included in a sub-contract signed between PRDC and the Department, pursuant to the overall PSDD contract signed between NCDD and PRDC. Total budget has been around \$ 2 million per year.

Province: the 23 Provinces and Phnom Penh Capital City represent the 2nd layer of government. They vary in size, from very small, like Kep (approx. 36,000 people) and Pailin (approx. 70,000 people), or large but with small populations, like Mondulkiri (over 60,000 people), and Ratanakiri (over 153,000) to densely populated and large, like Kampong Cham (over 1.7 million people) and Kandal (approx. 1.4 Million people).

PSDD: the Project to Support Democratic Development through Decentralization and Deconcentration is funded by DFID (UK), SIDA (Sweden) and UNDP and runs from 2006 till the end of 2010 (including a one year extension). Annual budgets range from \$ 11 million to over \$ 18 million. The project provides core technical support to NCDD and to the provinces, financial support to the C/S Fund, District Initiative, Provincial Investment Fund and capacity building support through training, studies and advisory services.

RILGP: The Rural Investment and Local Governance Project is a World Bank funded project that provides substantial support to C/S Fund projects and to developing the required infrastructure, policies, systems and skills. It started in 2003 with a Loan for \$ 22 million for 2003-2007 and was then extended with a Grant of \$ 36 million for the period of 2007-2010. Discussions about a possible RILGP 2 are taking place between RGC and the World Bank.

RPRP: the Rural Poverty Reduction Project is a seven year project from 2004 till 2010, funded by IFAD and UNDP and implemented through the Ministry of Agriculture, Forestry and Fishery, supported by the Ministry of Interior and facilitated by NCDD. The project is active in the provinces Prey Veng and Svay Rieng and focuses on 120,600 households below poverty line. The objective is poverty reduction with the active participation of the poor through improved livelihoods, Strengthened capacity, Sustainable farming systems and natural resource management, new and/or rehabilitated infrastructure development, increase accessibly to technology, services and markets for their economic and social development.

RULIP: the Rural Livelihoods Improvement Project is implemented by the Ministry of Agriculture Forestry and Fisheries (MAFF)' Project Support Unit- PSU, with the NCDD playing the role of cooperating agency. Funded by IFAD and UNDP, the project will run till 2014. The target group consists of poor households who have little or even no land, few livestock or other assets and often many dependents. The main goal of the project is to directly or indirectly improve the livelihood systems, food security and incomes of a total of 33,900 rural poor, ethnic minority and female headed households in targeted village of Kratie, Preah Vihear and Ratanakiri provinces in a sustainable manner.

Seth Koma: The UNICEF funded Seth Koma program focuses on measurable action for children and women. During 2006 -2010 it is implemented in six provinces. Government and UNICEF pursue a set of inter-related goals, addressing critical stages of the life cycle of the child: a) Mothers have safe pregnancies and deliveries and healthy newborns; b) best possible start in life of infant; c) Children enter schools at the right age of six years; d) Children are protected from exploitation, abuse, violence, discrimination and other risks; and e) Youth and adolescents acquire life skills, express their views, participate in the decisions.

Preface

The Government of Cambodia attaches great importance to optimal use of scarce resources and to participatory planning and management at all levels. The Organic Law which was adopted in 2008 provides the legal context for further steps towards improving and decentralizing planning, management and monitoring, and towards greater accountability and transparency of institutions at sub-national levels.

The Government has established elected Councils at the sub-national levels, and we will progressively give them the responsibilities, together with the human and financial resources, to deliver a wide range of public services. They will be more democratic, more efficient, more transparent and accountable, better at addressing gender and other inequalities, and at fighting corruption. We recognize that development does not come from government alone; it needs the involvement of citizens, civil society and the private sector, and the new system will facilitate this.

A central element in this process is the availability of information on any aspect of development to all concerned parties. The newly elected Councillors at District and Khan level, line departments operating at these levels, but also NGOs, Development Partners, Commune Councillors and citizens throughout Cambodia need information on problems and requirements, resources and opportunities, services and agencies, plans and projects. They will need such information to better understand the present situation, set targets for the future, monitor progress, know what others are doing and to apply resources wisely and this is the reason the District Data books will be so valuable.

The District Data Books are a major step towards full transparency and towards informed planning and decision-making. They provide all available data at District, Khan, Commune and Sangkat level in easily accessible formats, in Khmer and English, through over 16,000 printed copies, CD-ROMs and the NCDD website.

This is the first time in Cambodia (and possibly in South East Asia) that such detailed information is made so widely available and NCDD should be commended for the hard work that has gone into this. We also thank the Ministry of Planning, which provided the detailed data of the Commune Data Base, the sectoral ministries and provincial authorities who contributed data and the Development Partners who provided financial support.

It is our sincere hope that the publication of the District Data Books will strengthen capacities, especially at district levels, for evidence-based development planning. We also hope that this information will deepen the understanding among Ministries, Provincial Authorities, Development Partners, NGOs and research agencies of the realities at commune and district levels.

We call upon all to use and distribute this information, complement or correct where appropriate and to contribute new data in the years to come.

Sar KHENG

Deputy Prime Minister, Minister of Interior and Chairman of NCDD

Introduction

Purpose

The purpose of the District Data Books is to bring together information on any aspect of life and development of Districts, Khans, Communes and Sangkat, together and make this widely available. The primary targets are the newly elected District Councilors, district level line departments, provincial agencies, Development Partners and NGOs operating at this level. They need detailed knowledge on current living conditions, natural resources, infrastructure, agriculture and other economic activities, current service levels, past and planned projects and available resources.

While much information exists on many of the above aspects, it is often hard to access that information and much is lost to reports, databases and statistics that are not widely shared. Data are often only available in one language and often out-of-date, and many reports cover only one sector or region.

We found that these problems are especially acute at the district level. Now that Districts are becoming a much more significant level of local government and development planning, there is an urgent need for wide-ranging data to be used for setting base-lines, planning and prioritizing, monitoring and learning.

Approach

We have attempted to identify and compile all available statistics, reports, maps and other data at district and/or commune level. From this we have selected information that is available for all or most districts, reasonably reliable and up-to-date, sufficiently detailed and of possible interest to development planners, decision makers, agencies and citizens.

The major sources of the information in these District Data Books are:

- a) The Commune Data Base information over the years 2006 to 2009 (the most recent data were collected late last 2008), as compiled by the Ministry of Planning
- b) Detailed information directly collected from the Ministry of Health, the Ministry of Education, Youth and Sports and (for maps) the Ministry of Land Management, Urban Planning and Construction
- c) The Project Information Database (PID) at NCDD (up-to-date)
- d) The Commune Development and Planning Database (CDPD) (up to date)
- e) The District Information System (DIS) (updated per Mid 2009)
- f) Direct data collection at provincial and district level on private sector, irrigation, roads, and electricity, through provincial agencies
- g) Medical data collected from MEDiCAM
- h) The ID Poor Project – for poverty data on a number of provinces and districts
- i) NCDD's work on predictive poverty rates
- j) Specific projects for outputs, plans and budgets (Seth Koma, RILGP, RPRP and ICC)

Limitations of the data

We are fully aware that the data we collected are not always complete, consistent or correct. While we have rejected information that was wrong or very incomplete, we decided not to aim for statistical and scientific perfection, but to include information that is useful, relevant

and comprehensive. We also accepted different sources for the same data as this may encourage discussion on the quality of the respective data.

We strongly encourage anyone who notes errors or incompleteness in these data to contact us and to share their data. We hope that the next round of producing such District Data Books can draw on wider sources and more complete data.

We encourage the District Administrations, who receive these data also in digital format, not only to use these for their planning and monitoring, but also to start correcting and updating these data and to share new data with NCDD for future use.

Contents

The information in the following pages is organized in five sections:

- a) **Geographical data:** this section provides maps on infrastructure and administration and on land use and natural resources management. These maps are also provided in large format to all Districts and Khans.
- b) **District Profile:** this presents wide ranging data, covering 2006 – 2009, at district and commune level, extracted from the Commune Data Base, but edited for better understanding.
- c) **Plans and Projects:** this section presents development priorities determined by Commune and Sangkat Councils, Temporary Agreements, outputs and expenditure of major projects at Commune and District level over 2006 – 2008 and plans and budgets for 2009.
- d) **Services and Organizations:** this section provides details on key infrastructure (roads, electricity, irrigation systems) and services in health and education at district and commune level. It also provides an inventory of resources at the District Administration, NGOs operating in the district and private sector agencies active in the district.
- e) **Poverty Data:** this section provides predicted poverty rates for 2009 for all districts and communes and detailed poverty data compiled and processed by the ID Poor project for those that have been covered by this project.

The future

It is our hope that this is the start of a longer-term process. We hope that a next edition of these District Data Books will offer more comprehensive, correct and up-to-date information. We hope that the District Administrations will not only start using this information, but also improve and update it. For this they are all provided with the full data set in digital format.

We invite agencies, projects and experts to send reports, statistics and maps that could be used for a next version to us and we invite all users of the District Data Books to inform us about errors, updates and inconsistencies. Please contact us through info@ncdd.gov.kh

We now invite you to browse through this data book. You may open this randomly or use the table of contents and go to the aspects that have your special interest.

We hope that you will be informed, surprised and assisted. We hope, above all, that this information will lead to a deeper understanding of causes and effects of poverty, to purposeful decisions on how to tackle those causes and to greater transparency in using scarce resources for the benefit of all.

Martin de Graaf
Program Advisor, PSDD/NCD

SECTION A: GEOGRAPHY

1 Administration and Infrastructure

Please see separate folder containing A3 maps.

2 Land Use and Natural Resources

Please see separate folder containing A3 maps.

3 Geography

3.1 Land Area

Total Land Area (ha)	Forest Land Area (ha)		Cultivation Land Area (ha)	Construction Land Area (ha)	Other Land Area (ha)
	Total	Flooded Forest Area			
36350	0	0	21983	14447	320

3.2 Distances between Offices

Location	Distance (Km)
From District Office to C/S Office of Sangkat Damrei Choan Khla	0
From District Office to C/S Office of Sangkat Kampong Thum	0
From District Office to C/S Office of Sangkat Kampong Roteh	0
From District Office to C/S Office of Sangkat Ou Kanthor	0
From District Office to C/S Office of Sangkat Achar Leak	0
From District Office to C/S Office of Sangkat Kampong Krabau	0
From District Office to C/S Office of Sangkat Srayov	0
From District Office to C/S Office of Sangkat Prey Ta Hu	0

SECTION B: DISTRICT PROFILE¹

¹ All data in this section come from the Commune Database (CDB) unless otherwise specified. These include primarily new CDB data, collected late 2008, and some data from earlier years. Please note that percentages are rounded to the nearest whole number.

1 General Information

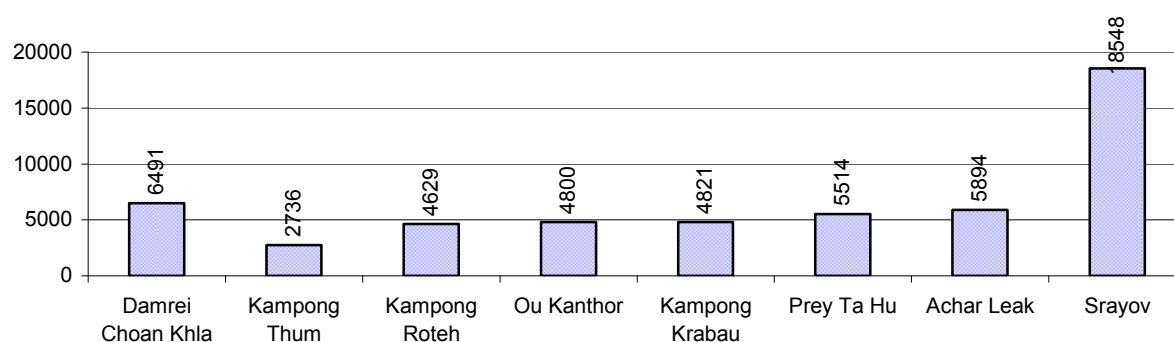
1.1 Population of the District

1.1.1 Total Population

Number of families	2005	2006	2007	2008
Total number of families	10,175 families	10,563 families	10,935 families	11,110 families
Increase (+)/Decrease (-) in nr of families		4%	4%	2%
Total population	52,146 pers	52,245 pers	53,169 pers	53,433 pers
Increase (+)/Decrease (-) in nr of people		0%	2%	0%
Number of female Headed Households (HH)	2,057 families	2,046 families	2,073 families	2,206 families

Note: Percentages of population and increase/decrease are calculated on basis of the previous year. A negative sign in front of the percentage indicates a decrease in population.

1.1.2 Population, by Commune, in 2008



1.1.3 Population, by Age Group, over 3 years

Population by age group	2006	2007	2008	
	%	%	%	Number
Age 0-5 years (as percentage of the population)	10%	10%	10%	5,425 persons
Male 0-5 yrs	50%	52%	50%	2,717 persons
Female 0-5 yrs	50%	48%	50%	2,708 persons
Age 6-17 (as percentage of the population)	29%	27%	27%	14,499 persons
Male 6-17 yrs	51%	52%	51%	7,360 persons
Female 6-17 yrs	49%	48%	49%	7,139 persons
Age 18-60 (as percentage of the population)	55%	54%	54%	28,818 persons
Male 18-60 yrs	48%	48%	47%	13,605 persons
Female 18-60 yrs	52%	52%	53%	15,213 persons
Age 61 above (as percentage of the population)	6%	9%	9%	4,691 persons
Male 61	42%	44%	44%	2,077 persons
Female 61	58%	56%	56%	2,614 persons

Note: The overall percentage for each age group is calculated on the basis of the total population. The gender distribution of each group is calculated on the basis of the population within that particular age group.

1.2 Occupations

1.2.1 Percentage of families with a particular Occupation over 3 years

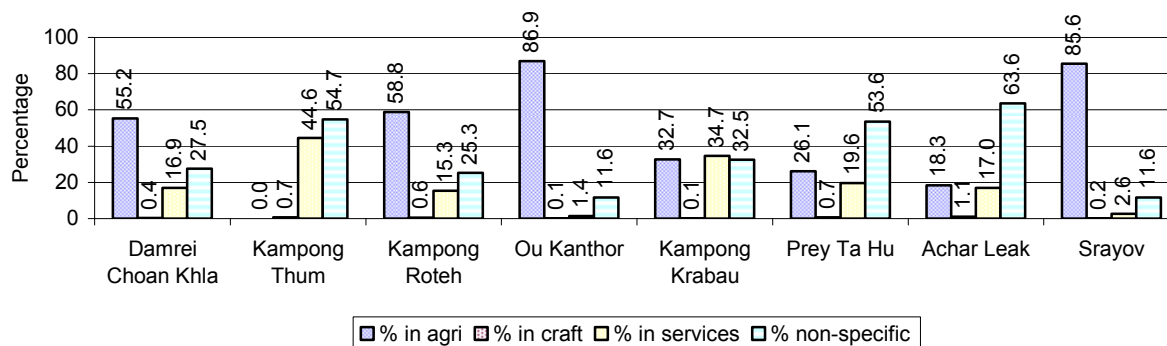
This table shows the percentage of the population who have a particular occupation (job), for example the percentage of the population in the district who are rice farmers, furniture crafter, trader, etc.

Description	2006	2007	2008	
	%	%	%	Number
Families whose main occupation is agriculture	59%	66%	57%	6,347 Families
Families whose primary occupation is rice farming	55%	62%	53%	5,898 Families
Families whose primary occupation is cultivating long-term crops	0%	0%	0%	5 Families
Families whose primary occupation is cultivating short-term crops	1%	1%	1%	103 Families
Families whose primary occupation is cultivating vegetable	0%	1%	1%	81 Families
Families whose primary occupation is fisherman	2%	2%	1%	156 Families
Families whose primary occupation is livestock farmer	2%	0%	1%	59 Families
Families whose primary occupation is NTFP collection	0%	0%	0%	45 Families
Families whose main occupation is craft work	1%	0%	0%	46 Families
Families, whose main occupation is in furniture craft, wooden, rattan, vine, bamboo	0%	0%	0%	13 Families
Families whose main occupation is in metal, aluminum, glass goods production	0%	0%	0%	9 Families
Families whose main occupation is food production	0%	0%	0%	5 Families
Families whose main occupation is tire, plastics and rubber goods production	0%	0%	0%	0 Families
Families whose main occupation is textile, clothing goods production	0%	0%	0%	1 Families
Families whose main occupation is in other production, not listed above	0%	0%	0%	18 Families
Families whose main occupation is services	12%	12%	14%	1,508 Families
Families whose main occupation is trade	6%	7%	7%	766 Families
Families whose main occupation is repair	1%	2%	2%	184 Families
Families whose main occupation is providing transport services	3%	2%	3%	286 Families
Families whose main occupation is providing other services	2%	1%	2%	272 Families
Families whose main occupation is not clear (or multi)	29%	22%	29%	3,209 Families

Note: The occupation percentages are calculated on the basis of the total number of families.

1.2.2 Percentage Families that work in one of four occupational sectors, by Commune in 2008

This table indicates the percentage of families involved in one of four occupation types: agriculture, craft, services or non-specific (other). Please note agriculture includes forestry activities such as cutting down trees and gathering gum from the trees.



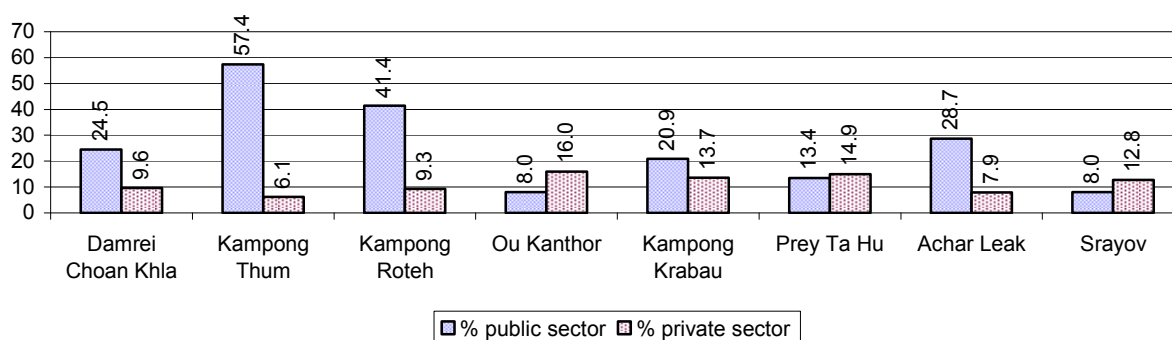
Note: Calculated on the basis of the total number of families within a commune.

1.2.3 Percentage of Families with public Sector, private Sector or uncertain Jobs, over 3 years

Description	2006	2007	2008	
	%	%	%	Number
Families that have a family member who is a government official, staff or worker	20%	18%	20%	2,171 families
Families that have a family member who is a private sector staff or worker	12%	12%	12%	1,304 families
Number of people aged 18-60 with uncertain/irregular jobs	4%	8%	10%	3,019 persons

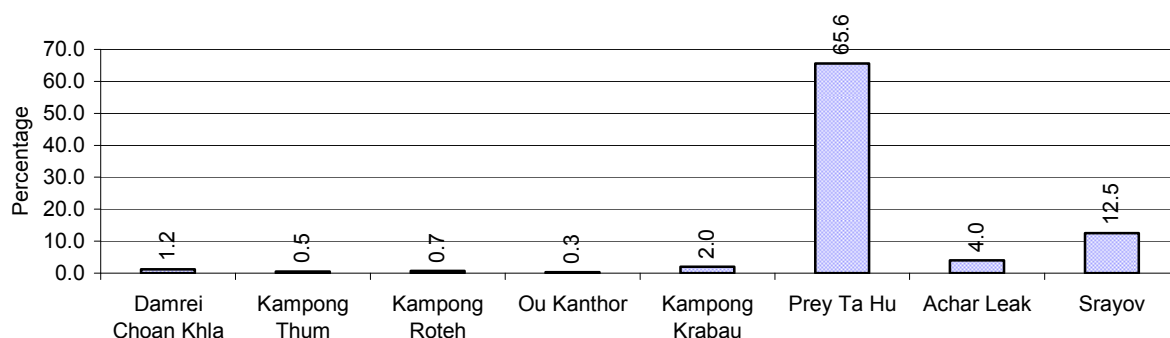
Note: In the first two rows percentages are calculated on the basis of the total number of families. In the third row the percentage is calculated on the basis of the total number of people aged 18-60 years.

1.2.4 Percentage of Families with public or private Sector Jobs, by Commune in 2008



Note: Calculated on the basis of the total number of families in the commune

1.2.5 Percentage of People aged 18-60 years with uncertain/irregular Jobs, by Commune, in 2008.



1.3 Property

1.3.1 Housing types and facilities over 3 years

This table shows the percentage of people living in a certain type of house. It also indicates how many houses have electricity or battery powered lights and how many have TV.

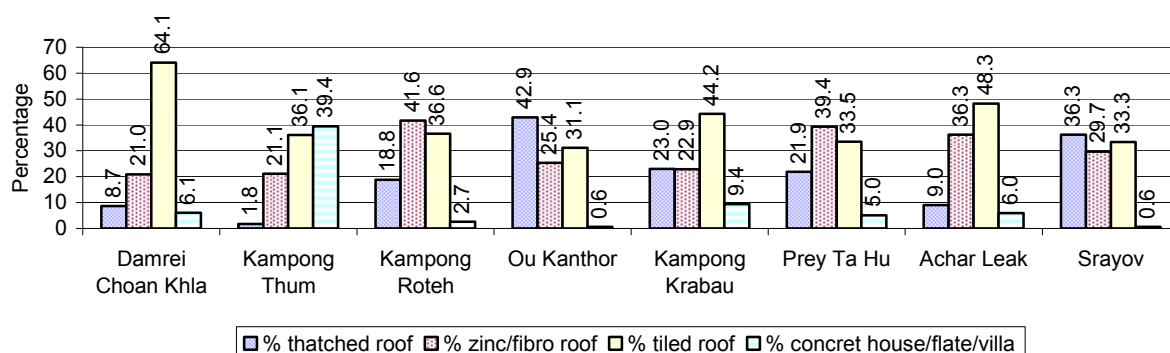
House Type	2006	2007	2008	
	%	%	%	Number
House with thatched roof	30 %	26 %	24 %	2,420 houses
House with zinc/fibro roof	28 %	31 %	30 %	3,006 houses
House with tiled roof	37 %	38 %	40 %	4,018 houses
Flats/apartments (with many families living)	1 %	1 %	1 %	124 houses
Concrete house or flat (with one family living)	4 %	4 %	4 %	442 houses
Villa house	0 %	0 %	0 %	13 houses
Houses with electricity	39 %	44 %	45 %	4,541 houses
Houses with battery light	45 %	44 %	48 %	4,785 houses
Houses with TV	65 %	69 %	73 %	7,278 houses

Note: Calculated against the total number of houses

1.3.2 Families living on public Land or without a permanent House

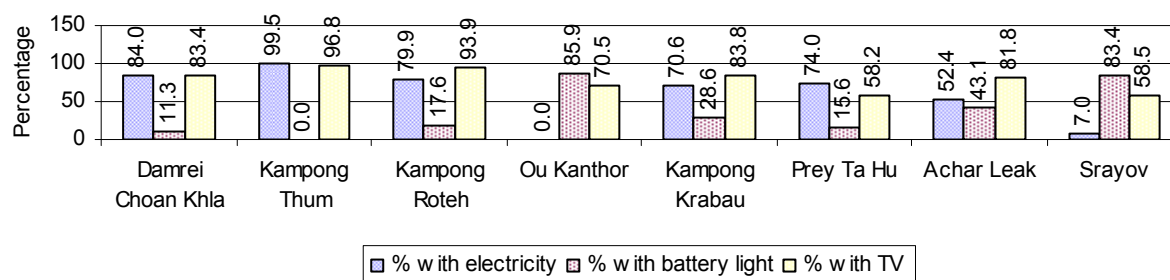
Living situation	2006	2007	2008
Families living in a house on public land	183 families	263 families	409 families
People, without permanent housing	23 person(s)	46 person(s)	51 person(s)

1.3.3 Percentage of Population living in a particular type of House, by Commune, in 2008



Note: Calculated against the total number of houses in each commune

1.3.4 Percentage of Houses with Electricity, Battery Lights and/or TVs, by Commune, in 2008



Note: Calculated against the total number of houses in each commune

1.3.5 Types of Vehicles and their ratio to Families across 3 years

This table shows the number of families per vehicle in the district. The last column shows the total number of each type of vehicle in the district for 2008.

Description	2006 ratio	2007 ratio	2008	
			Ratio	Number
Bicycle and bicycle with trailer	2	2	2	6,840
Ox-carts and horse-carts	5	6	5	2,118
Motorbike/with trailer	2	2	2	5,050
Motor tri-cycle	3,521	994	794	14
Large Transportation				
Total number of cars/trucks	21	20	20	568
Locally made vehicles	660	643	741	15
Trucks for goods transport	69	60	58	190
Buses/mini buses for passengers	151	144	156	71
Family cars	40	42	38	292
Agriculture machinery				
Tractors used for plowing	246	267	278	40
Power-tillage used for plowing	42	40	29	380
Other type of machinery				
Other type of machinery	330	456	505	22
Water transportation				
Row boats	9	9	9	1,236
Total number of motor boats				
Motor boats used for fishing	24	29	31	362
Motor boats used for passengers	2,113	10,935	11,110	1
Motor boats used for goods transporting	503	304	292	38

Note: Ratio of families to a particular type of vehicle is the result of the total number of families divided by total number of that type of vehicle. Other types of vehicles, such as bulldozer, excavator, rollers etc. are not listed.

2 Infrastructure and Economy

2.1 Roads in meters over 3 years

Description	2006	2007	2008
Bituminous road	0 m	0 m	0 m
DBST, Macadam road	16,764 m	21,228 m	21,228 m
Concrete road	0 m	0 m	0 m
Laterite road	45,786 m	58,840 m	63,405 m
Constructed earth road	7,581 m	103,427 m	15,617 m
Un-constructed earth road	49,704 m	51,129 m	48,623 m

2.2 Sewerage Pipes in meters over 3 years

Description	Sewage pipe length		
	2006	2007	2008
Total length of sewage pipe, diameter 30-50 cm	3,826 m	3,804 m	3,811 m
Length of newly constructed sewage pipe, diameter 30-50 cm	590 m	524 m	506 m
Length of sewage pipe, diameter 30-50 cm needs repair/rehabilitation	1,324 m	1,309 m	9 m
Total length of sewage pipe, diameter of pipe 60-100 cm	9,642 m	9,399 m	14,915 m
Length of newly constructed sewage pipe, diameter 60-100 cm	1,012 m	222 m	730 m
Length of sewage pipe, diameter 60-100 cm needs repair/rehabilitation	55 m	44 m	29 m
Sewage pipe, diameter of pipe over 100 cm	120 m	42 m	370 m
Length of newly constructed sewage pipe, diameter over 100 cm	32 m	35 m	264 m
Length of sewage pipe, diameter over 100 cm needs repair/rehabilitation	0 m	6 m	6 m

2.3 Drainage and Bridges

Construction Type	2006		2007		2008	
	place(s)	Length	place(s)	Length	place(s)	Length
Single pipe culvert	10	54m	14	111 m	13	67 m
Double-pipe culvert	4	29m	2	15 m	3	23 m
Box pipe culvert	7	64m	4	40m	7	64 m
Wooden bridge	7	188m	0	0m	5	125 m
Concrete bridge	7	214m	6	230m	9	204 m
Bale bridge	0	0m	1	150m	1	20 m
Spillway construction	1	0m	2	50m	0	0 m

2.4 Services in the District

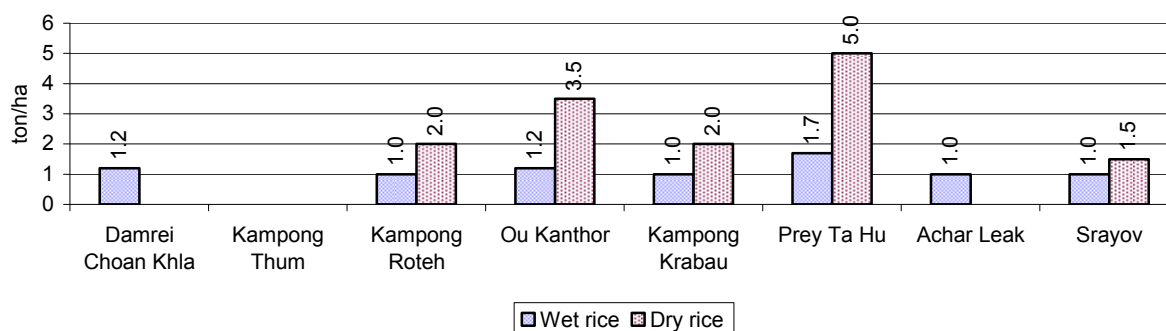
Descriptions	Number of places by year		
	2006	2007	2008
Public			
Electricity generating stations	1	0	2
Health clinics	5	7	8
Private			
Bicycle and motorcycle repair places	60	73	70
Agricultural machinery, tools and equipment repair places	16	26	23
Electronic tool repair places	20	22	25
Battery-charging services	34	27	27
Handicraft places, wooden furniture and forest by-products	8	13	13
Other handicraft places (excluding furniture)	11	7	12
Small-scale services (hairstylist, phone service, massage, Karaoke, etc)	101	98	123
Small-scale food shop businesses (Food, groceries, drink shop, etc)	107	96	112
Small-scale rice mills	255	208	230
Medium or large-scale rice mills	4	5	5
Small-scale markets	4	3	4
Large-scale market	2	2	2
Alcohol refinery places	6	16	7
Pharmacies and small drug stores	28	21	22
Hotels	3	5	4
Guest houses	12	13	14
Restaurants	17	15	12
Gasoline stations	10	9	13

2.5 Agriculture

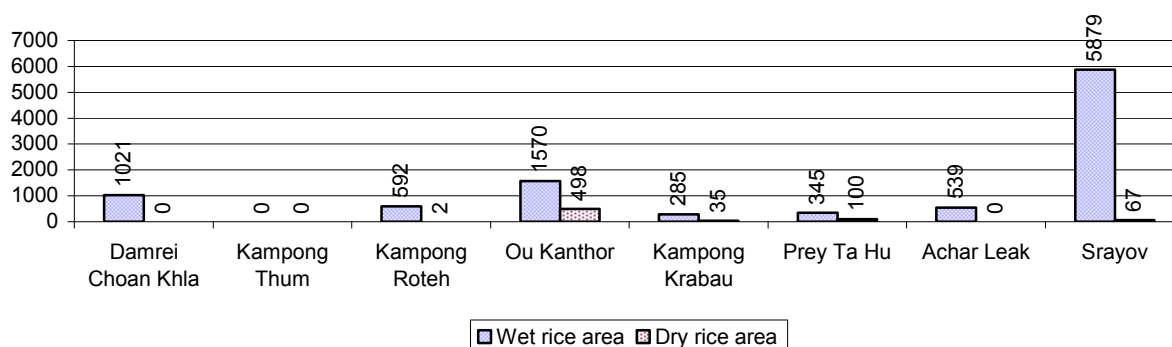
2.5.1 Rice cultivation in the District over 3 years

Description	2006	2007	2008
Total dry rice land area	448 ha	506 ha	827 ha
Actual dry rice cultivation area	403 ha	461 ha	702 ha
% actual cultivation to total land	90%	91%	85%
Total dry rice production	1,159 tonne(s)	1,337 tonne(s)	1,966 tonne(s)
Average dry rice yield	2.9 tonne(s)/ha	2.9 tonne(s)/ha	2.8 tonne(s)/ha
Total wet rice land area	14,341 ha	5,342 ha	16,399 ha
Actual wet rice cultivation area	10,247 ha	5,332 ha	10,232 ha
% actual cultivation to total land	71 %	100%	62%
Total wet rice production	13,320.87 tonne(s)	7,007.75 tonne(s)	11,839.68 tonne(s)
Average wet rice yield	1.3 tonne(s)/ha	1.3 tonne(s)/ha	1.2 tonne(s)/ha
Total intensive rice land area	221 ha	176 ha	216 ha
Actual intensive rice cultivation area	436 ha	606 ha	746 ha
Average intensive rice yield	1.6 tonne(s)/ha	2.9 tonne(s)/ha	2.9 tonne(s)/ha
Actual upland rice cultivation area	0 ha	0 ha	0 ha
Total upland rice production	- tonne(s)	- tonne(s)	- tonne(s)
Average upland rice yield	- tonne(s)/ha	- tonne(s)/ha	- tonne(s)/ha

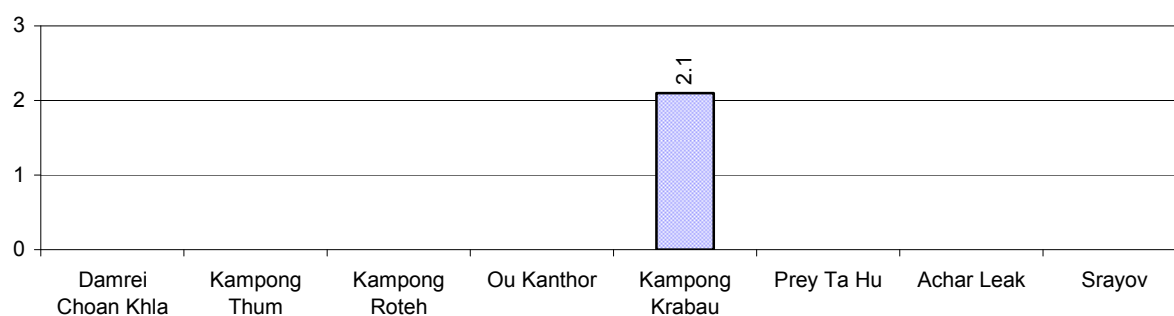
2.5.2 Estimated wet and dry Season Rice Yield in tonne(s)/Ha, by Commune, in 2008



2.5.3 Cultivated wet and dry Season Rice areas in Ha, by Commune, in 2008



2.5.4 Estimated intensive Rice Yields in tonnes/Ha, by Commune, for 2008



2.5.5 Estimated upland Rice Yield in tonnes/Ha, by Commune, for 2008

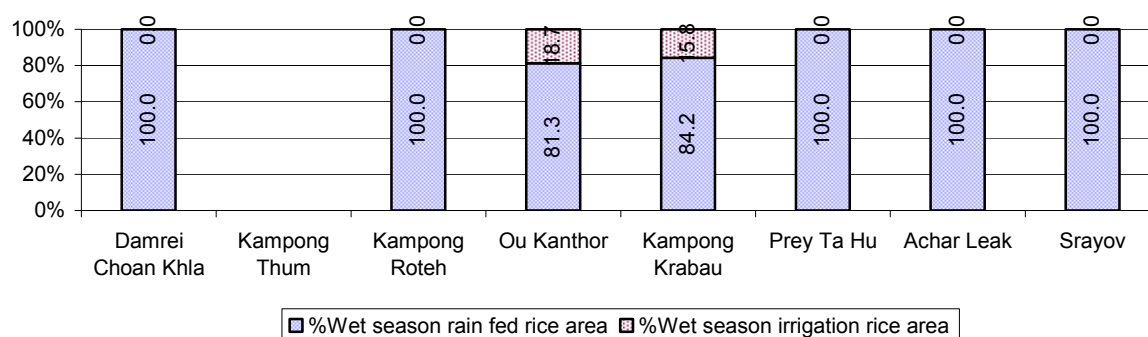
There were no estimated upland rice yields in this District in 2008

2.5.6 Wet season Rice irrigation across 3 years

Description		2006	2007	2008	
		%	%	%	Number
Total area of wet season rain fed rice land		93%	75%	97 %	9,894 ha
Percentage of wet season rice land that is irrigated; and for 2008 area in Ha		7 %	25 %	3 %	338 ha
Where	Area irrigated from canal/dam	93 %	0 %	42 %	143 ha
	Area irrigated from river, stream, lake, natural pond	7 %	100 %	58 %	195 ha
	Area irrigated from drilled well	0 %	0 %	0 %	0 ha
	Area irrigated from dug pond	0 %	0 %	0 %	0 ha

2.5.7 Water sources for wet Season Rice Cultivation, by Commune, in 2008

This chart shows the percentage of wet season rice cultivation receiving water from rain (natural) and from irrigation.



2.5.8 Access to Irrigation

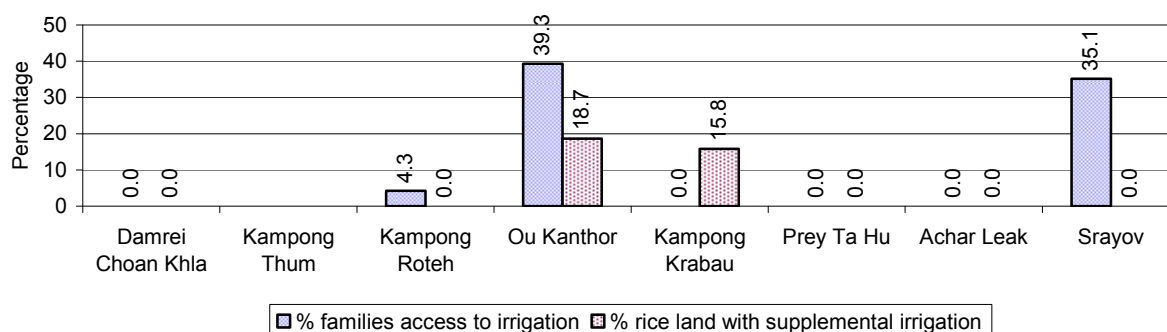
Description	2006 %	2007 %	2008	
			%	Number
Families who have access to irrigation water	27%	20%	25%	1,448 families
Families who have irrigation wells	0%	0%	0%	10 families

Note: Calculated against the total number of families are rice farmers

2.5.9 Number of Irrigation Wells over 3 years

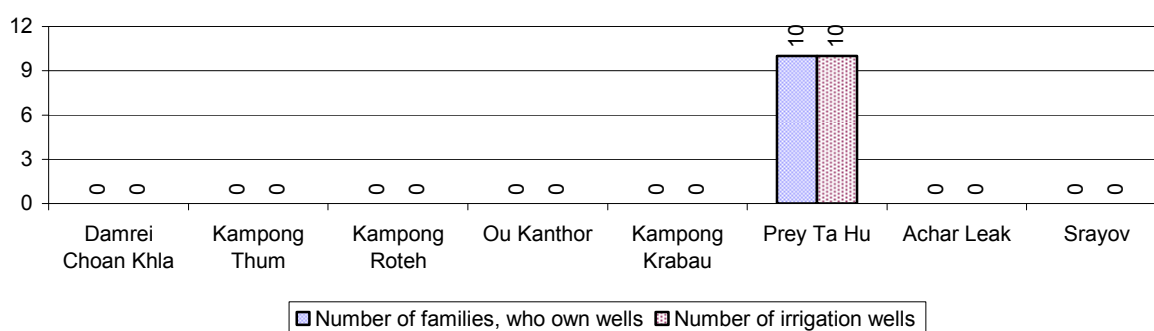
Description	2006	2007	2008
Number of irrigation wells	10 wells	10 wells	10 wells

2.5.10 Percentage of Families with access to (supplemental) Irrigation for wet Season Rice cultivation, by Commune, in 2008



Note: % of families, with access to irrigation is calculated against the total number of families, whose main occupation is rice farming. Irrigated wet rice land area is calculated against the total actual wet rice land cultivated areas

2.5.11 Irrigation Wells, by Commune, in 2008

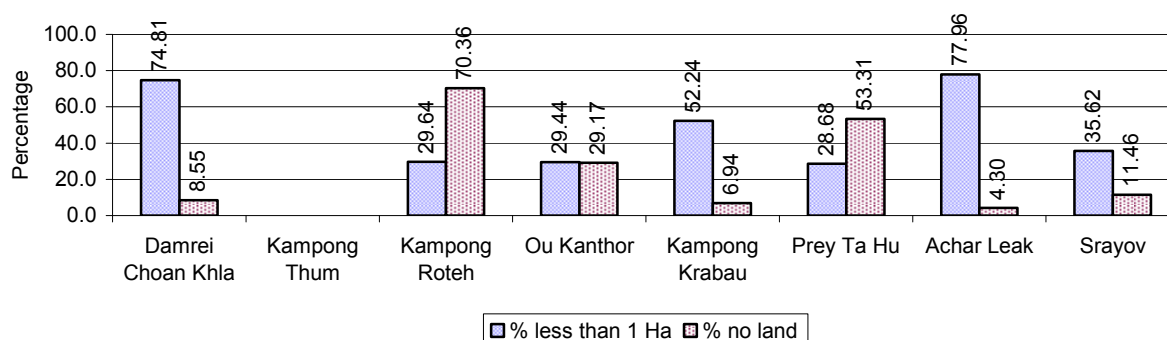


2.5.12 Farmers owning less than one hectare of Rice Land

Description	2006 %	2007 %	2008	
			%	Number
Families who have less than one hectare of rice land	40%	37%	40%	2,374 families
Families who do not own any rice land	15%	22%	21%	1,220 families

Note: Calculated on basis of total number of families who are rice farming

2.5.13 Percentage of Farmers with less than one Hectare or no Rice Land, by Commune, in 2008

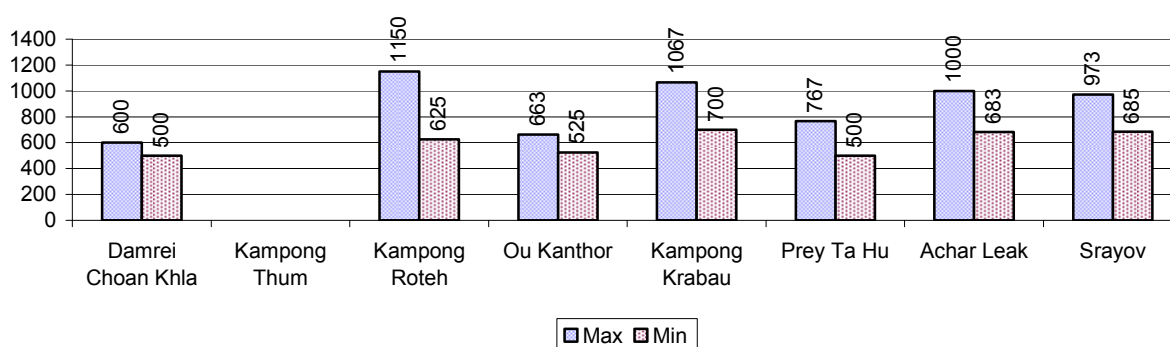


Note: Calculated on basis of total number of families who are rice farming

2.5.14 Average farm-gate Prices of Rice, over 3 years

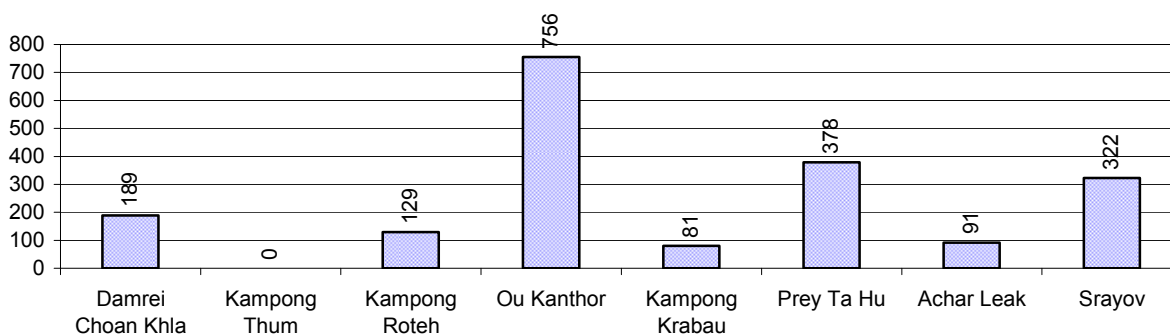
Description	2006	2007	2008
Maximum average farm gate price	546 Riels/Kg	838 Riels/Kg	888 Riels/Kg
Minimum average farm gate price	425 Riels/Kg	645 Riels/Kg	603 Riels/Kg
Average farm gate price	486 Riels/Kg	742 Riels/Kg	745 Riels/Kg
Average rice production per person	285 Kg/person	168 Kg/person	272 Kg/person

2.5.15 Minimum and maximum farm-gate Prices of Rice in Riel/kg, by Commune, in 2008



2.5.16 Production of Paddy in Kgs/Person, by Commune, in 2008

This table shows how much paddy (harvested rice) is produced in a year in a commune, in kgs per person.



2.5.17 Production of other Crops, over 3 years

Crops	2006	2007	2008
Corn cultivation area	0 ha	5 ha	0 ha
Estimated corn yield	- tonne(s)/ha	1.0 tonne(s)/ha	- tonne(s)/ha
Estimated corn production	- tonne(s)	5 tonne(s)	- tonne(s)
Soya bean cultivation area	0 ha	0 ha	0 ha
Estimated Soya bean yield	- tonne(s)/ha	- tonne(s)/ha	- tonne(s)/ha
Estimated Soya bean production	- tonne(s)	- tonne(s)	- tonne(s)
Mungbean cultivation area	0 ha	1 ha	0 ha
Estimated Mungbean yield	- tonne(s)/ha	0.5 tonne(s)/ha	- tonne(s)/ha
Estimated Mungbean production	- tonne(s)	1 tonne(s)	- tonne(s)
Peanut cultivation area	0 ha	2 ha	0 ha
Estimated Peanut yield	- tonne(s)/ha	0.5 tonne(s)/ha	- tonne(s)/ha
Estimated Peanut production	- tonne(s)	1 tonne(s)	- tonne(s)
Cassava cultivation area	1 ha	5 ha	0 ha
Estimated Cassava yield	3.0 tonne(s)/ha	5.0 tonne(s)/ha	- tonne(s)/ha
Estimated Cassava production	3 tonne(s)	25 tonne(s)	- tonne(s)
Sweet potatoes cultivation area	0 ha	1 ha	0 ha
Estimated Sweet potatoes yield	- tonne(s)/ha	1.0 tonne(s)/ha	- tonne(s)/ha
Estimated Sweet potatoes production	- tonne(s)	1 tonne(s)	- tonne(s)
Sesame cultivation area	0 ha	2 ha	0 ha
Estimated Sesame yield	- tonne(s)/ha	0.6 tonne(s)/ha	- tonne(s)/ha
Estimated Sesame production	- tonne(s)	1 tonne(s)	- tonne(s)

2.5.18 Yields of Corn, Soya beans and Mungbeans in tonne(s)/ha, by Commune, in 2008

There were no yields for any of these crops in this District in 2008

2.5.19 Yields of Peanuts and Cassava in tonne(s)/ha by Commune, in 2008

There were no yields for any of these crops in this District in 2008

2.5.20 Yields of Sweet Potatoes and Sesame in tonne(s)/ha, by Commune, in 2008

There were no yields for any of these crops in this District in 2008

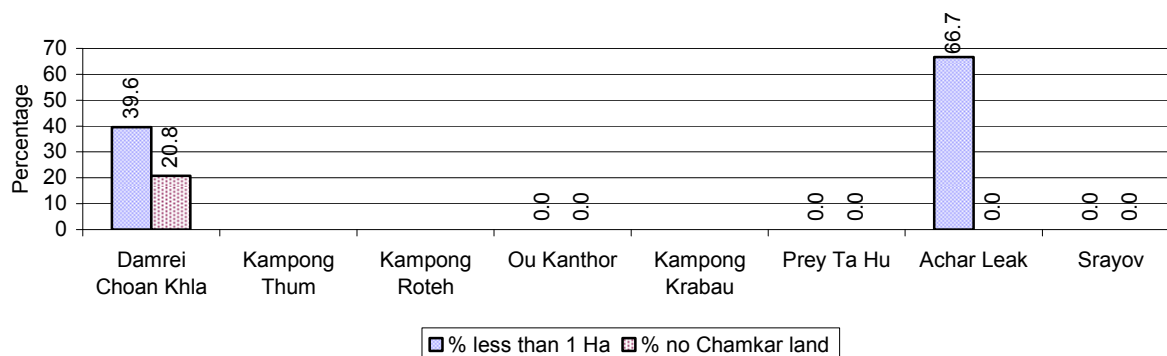
2.5.21 Percentage Farmers who own less than 1 Ha or no Chamkar land

Description	2006 %	2007 %	2008	
			%	Number
Families, who own less than 1ha of Chamkar land	12%	57%	14%	27 families
Families, with no Chamkar land	53%	0%	5%	10 families

Note 1: Calculated as a percentage of the total number of families whose main occupation is Chamkar (not rice) farming

Note 2: Chamkar land is no-rice land, i.e. other crops

2.5.22 Percentage Farmers owning less than 1 ha or no Chamkar land, by Commune, in 2008



Note: Percentage is calculated among families, who Chamkar farm as a main occupation, not the total population of the commune.

2.5.23 Percentage of Families raising Cattle/Buffalo, over 3 years

Description	2006 %	2007 %	2008	
			%	Number
Families raising cattle/buffalo	34%	33%	35%	3,879 families
Families raising cattle/buffalo as labor forces	23%	24%	23%	2,608 families

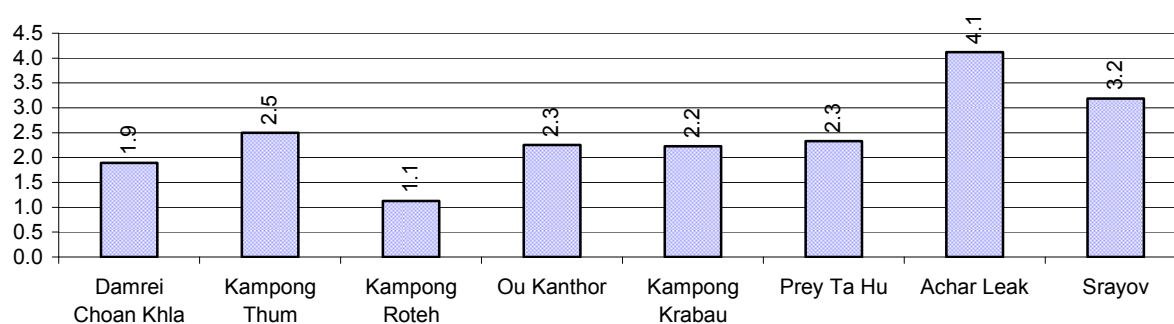
Note: Calculated against the total number of families.

2.5.24 Number of Cattle/buffalo being raised, over 3 years

Description	2006	2007	2008
Total number of cattle/buffalo	10,336 head(s)	10,383 head(s)	10,889 head(s)
Average cattle/buffalo per families	2.9 head(s)/families	2.9 head(s)/families	3 head(s)/families

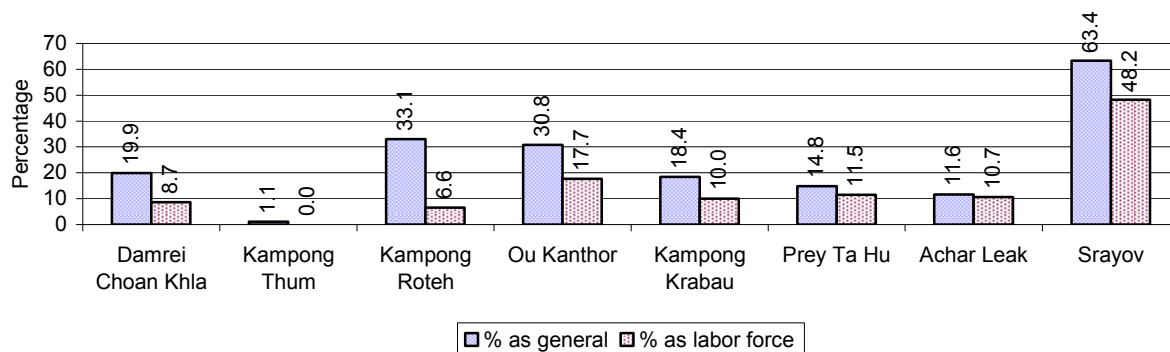
Note: Calculated by dividing total number of cattle/buffalo by total number of cattle/buffalo raising families

2.5.25 Average number of Cattle/Buffalo per Family, by Commune, in 2008



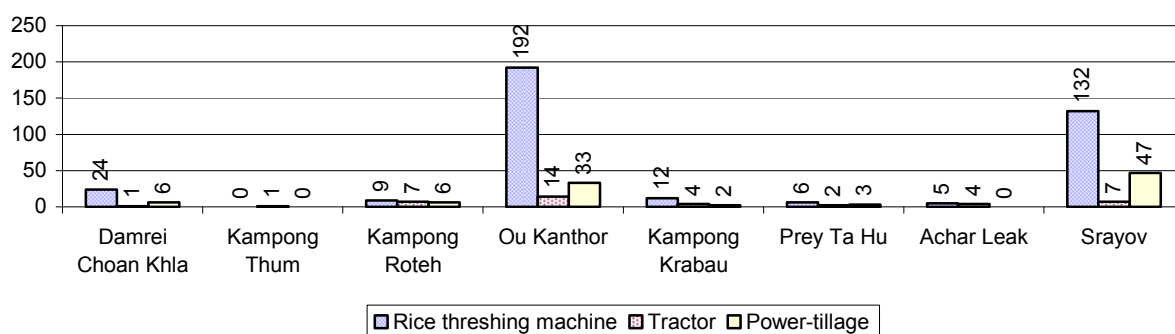
Note: Calculated by dividing total number of cattle/buffalo by total number of cattle/buffalo raising families

2.5.26 Percentage Families raising Cattle/Buffalo, for general and labor purposes in 2008, by Commune



Note: Calculated using the total number of families raising cattle/buffalo against the total number of families.

2.5.27 Type and number of agricultural Machines, by Commune, in 2008

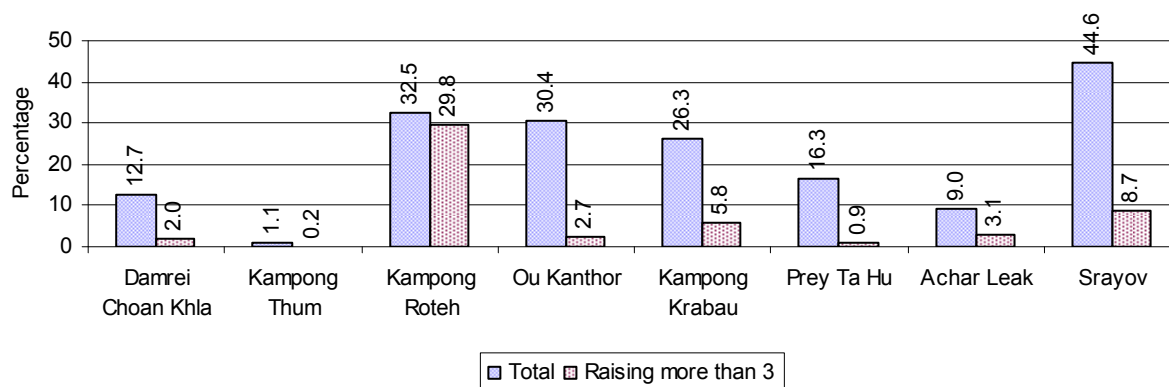


2.5.28 Livestock-producing Households over 3 years

Description	2006 %	2007 %	2008	
			%	Number
Total number of families raising pigs	33%	29%	28%	3,091 families
number of families raising more than 3 pigs	6%	5%	7%	804 families
Total number of families raising chickens	62%	63%	62%	6,932 families
number of families raising more than 3 chickens	48%	51%	51%	5,658 families
Total number of families raising ducks	4%	5%	5%	519 families
number of families raising more than 5 ducks	3%	3%	4%	389 families
Total number of families raising goats or sheep	0%	0%	0%	1 families
Total number of families raising horses	0%	0%	0%	32 families

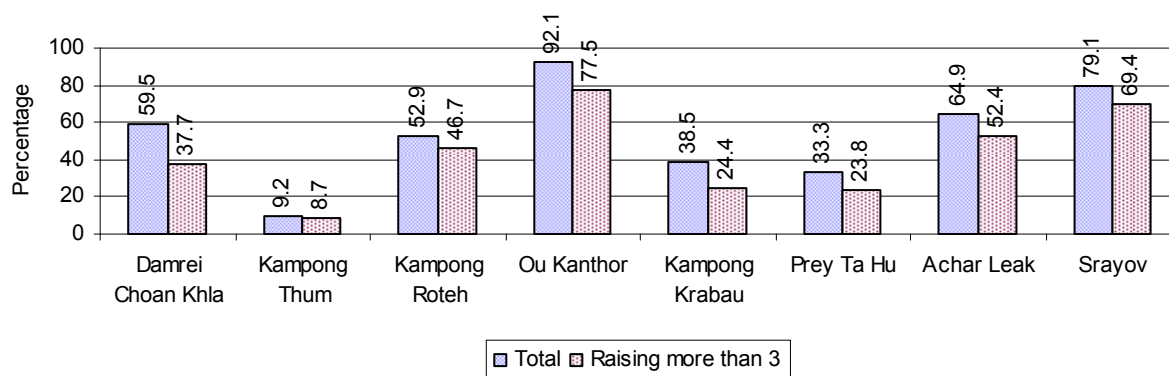
Note: Calculated against the total number of families

2.5.29 Percentage Families raising Pigs, by Commune, in 2008



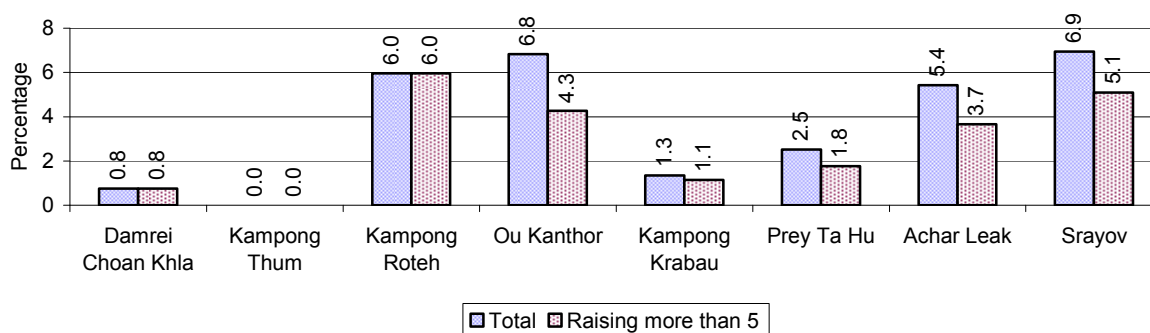
Note: Calculated against the total number of families in the commune

2.5.30 Percentage Families raising Chickens, by Commune, in 2008



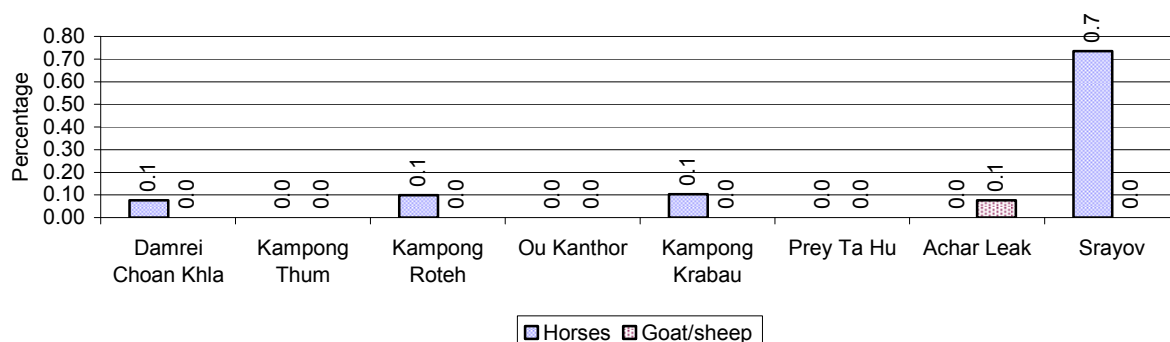
Note: Calculated against the total number of families in the commune

2.5.31 Percentage Families raising Ducks, by Commune, in 2008



Note: Calculated against the total number of families in the commune

2.5.32 Percentage Families raising Horses, Goats or Sheep, by Commune, in 2008

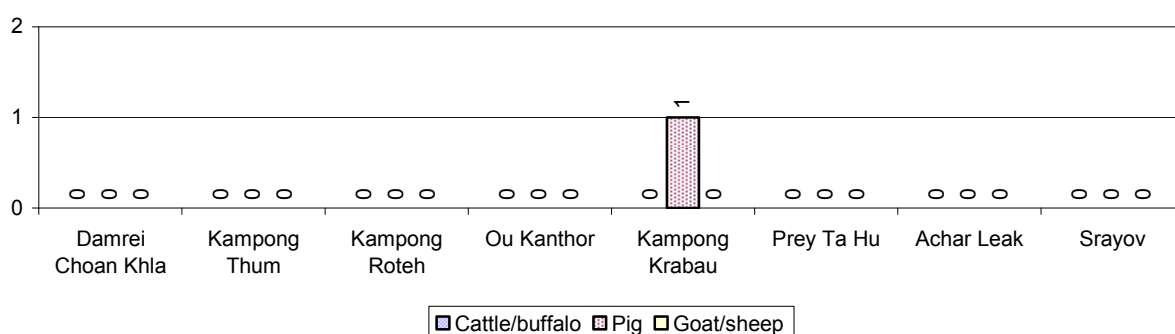


Note: Calculated against the total number of families in the commune

2.5.33 Livestock Farms over 3 years

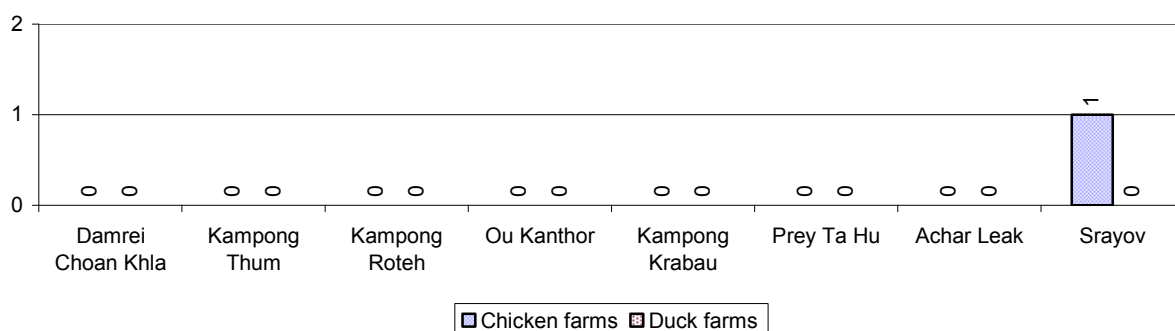
Description	2006	2007	2008
Number of cattle/buffalo farms	0 farm(s)	0 farm(s)	0 farm(s)
Number of pig farms	0 farm(s)	1 farm(s)	1 farm(s)
Number of goat/sheep farms	0 farm(s)	0 farm(s)	0 farm(s)
Number of chicken farms	0 farm(s)	0 farm(s)	1 farm(s)
Number of duck farms	4 farm(s)	4 farm(s)	0 farm(s)

2.5.34 Number Livestock Farms, by Commune in 2008



Note: Number of farms are recorded by the village chief, not by counting number of livestock in each farm

2.5.35 Number Chicken and Duck Farms, by Commune, for 2008



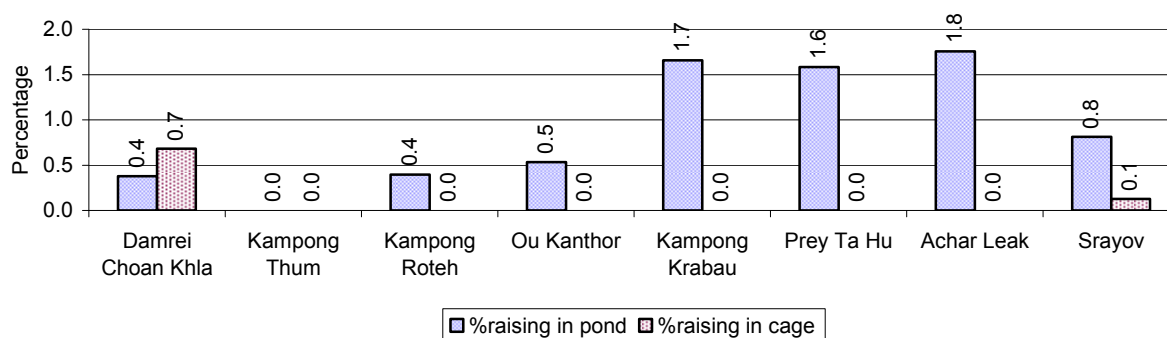
Note: Number of farm places recorded by village chief, not by counting number of livestock in each farm

2.5.36 Families raising Fish over 3 years

Description	2006	2007	2008
Total number of families raising fish	133 families	106 families	116 families
% families raising fish	1%	1%	1%
Number families raising fish in pond	122 families	97 families	102 families
% families raising fish in pond	1%	1 %	1%
Number fish pond	132 pond(s)	122 pond(s)	133 pond(s)
No. of ponds per family	1.1 pond/families	1.3 pond/families	1.3 pond/families
Number of families raising fish in cage	11 families	9 families	14 families
%families raising fish in cage	0 %	0 %	0%
Number of fish cage	12 cage(s)	10 cage(s)	14 cage(s)
No. of fish cage per family	1.1 cage /families	1.1 cage /families	1.0 cage /families

Note: % of families raising fish or fish in ponds or cages is calculated a percentage of the total number of families.

2.5.37 Percentage of Families raising Fish, by Commune, in 2008



Note: Calculated as a percentage of the total number of families in the commune.

2.5.38 Shrimp and Prawn Farming over 3 years

Description	2006	2007	2008
Number of families raising shrimps	0 families	0 families	0 families
% Families raising shrimps	0%	0%	0%
Number of shrimp ponds	0 pond	0 pond	0 pond
Total area raising shrimps	0 ha	0 ha	0 ha
Area per family	-ha/families	-ha/families	-ha/families
Number of families raising prawns	0 families	0 families	0 families
% families raising prawns	0%	0%	0%
Number prawn ponds	0 pond	0 pond	0 pond
Ponds per families	- pond/families	-pond/families	-pond/families
Number of prawn cages	0 cage	0 cage	0 cage
Cages per families	0 cage /families	0 cage /families	0 cage /families

Note: Percentage of families raising either prawns or shrimp is calculated against the number of families, who do aquaculture farming, NOT the total population.

2.5.39 Numbers of Families raising Shrimps and number of Shrimp Ponds, by Commune, in 2008

There were none of these in this District in 2008

2.5.40 Number of Families raising Prawn and Number of Prawn Ponds/Cages, by Commune, in 2008

There were none of these in this District in 2008

3 Social Aspects

3.1 Education

3.1.1 Kindergarten in the District over 3 years

Description	2006	2007	2008
Number of community kindergarten schools	0 school(s)	0 school(s)	4 school(s)
Number of community kindergarten class rooms	0 room(s)	0 room(s)	3 room(s)
Number of community kindergarten classes	0 class(es)	0 class(es)	3 class(es)
Number of community kindergarten teachers	0 person(s)	0 person(s)	3 person(s)
Number of women community kindergarten teachers	0 women	0 women	3 women
Number of state and private kindergarten schools	11 school(s)	11 school(s)	17 school(s)
Number of state and private kindergarten class rooms	23 room(s)	21 room(s)	27 room(s)
Number of state and private kindergarten classes	35 class(e)s	32 class(es)	38 class(es)
Number of state and private kindergarten teachers	45 person(s)	39 person(s)	48 person(s)
Number of women state and private kindergarten teachers	45 women	39 women	47 women

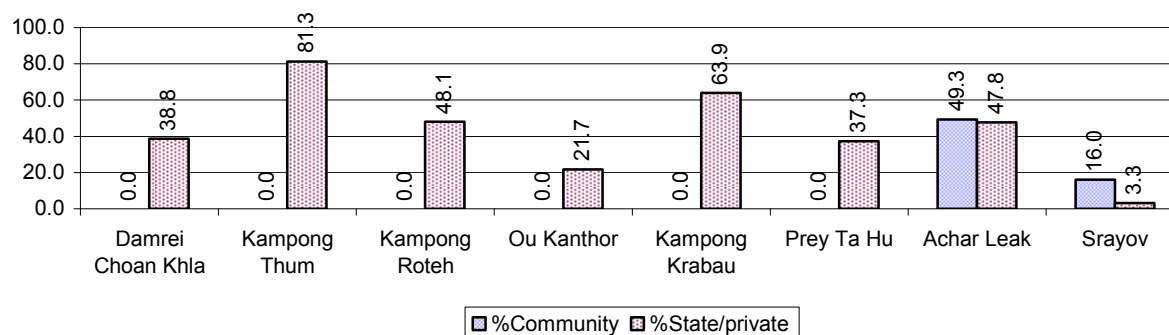
3.1.2 Percentage enrolment at Kindergarten level over 3 years

This table shows the percentage of the total 3-5 year old population attending kindergarten.

Description	2006 %	2007 %	2008	
			%	Number
Total percentage of children, 3-5 yrs, go to kindergarten	38%	40%	40%	1,331 person(s)
Percentage of children, 3-5 yrs, go community kindergarten	13%	12%	12%	414 person(s)
Percentage children, 3-5 yrs, go state/private kindergarten	25%	28%	28%	917 person(s)

Note: Calculated against the total for that age group

3.1.3 Percentage of Children 3-5 yrs attending Kindergarten, by Commune, in 2008



3.1.4 Basic Education over 3 years

Primary School

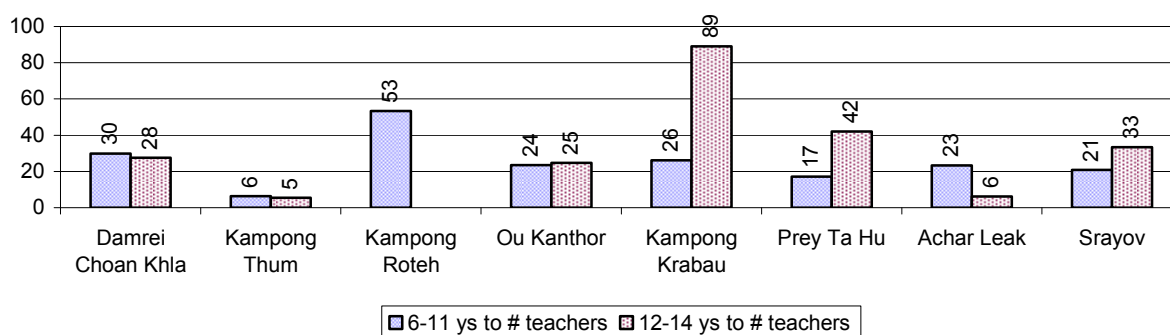
Description	2006	2007	2008
Number of primary schools	28 school(s)	29 school(s)	34 school(s)
Number of primary school rooms	176 room(s)	134 room(s)	178 room(s)
Number of primary classes	277 class(es)	196 class(es)	245 class(es)
Number of primary teachers	302 person(s)	214 person(s)	307 person(s)
Ratio of children 6-11 yrs to school	231	225	191
Ratio of children 6-11 yrs to school room	37	49	36
Ratio of children 6-11 yrs to class	23	33	27
Ratio of children 6-11 yrs to teacher	21	30	21

Note: According to education norm, children 6-11 yrs should attend primary school, while 12-14 yrs should be in lower secondary school, but in reality this varies.

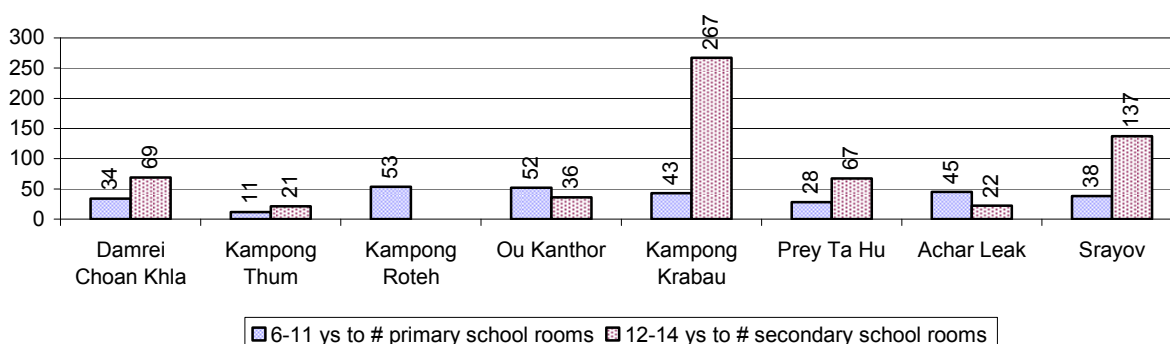
Lower Secondary School

Description	2006	2007	2008
Number of lower secondary schools	7 school(s)	6 school(s)	9 school(s)
Number of lower secondary school rooms	67 room(s)	58 room(s)	63 room(s)
Number of lower secondary classes	91 class(es)	183 class(es)	72 class(es)
Number of lower secondary teachers	208 person(s)	169 person(s)	191 person(s)
Ratio children 12-14 yrs to school	589	636	422
Ratio of children 12-14 yrs to school room	62	66	60
Ratio of children 12-14 yrs to class	45	21	53
Ratio of children 12-14 yrs to teacher	20	23	20

3.1.5 Ratio of 6-11 year old and 12-14 year old Children to number of Teachers, by Commune, in 2008



3.1.6 Ratio of 6-11 year old and 12-14 year old Children to number of School Rooms, by Commune, in 2008



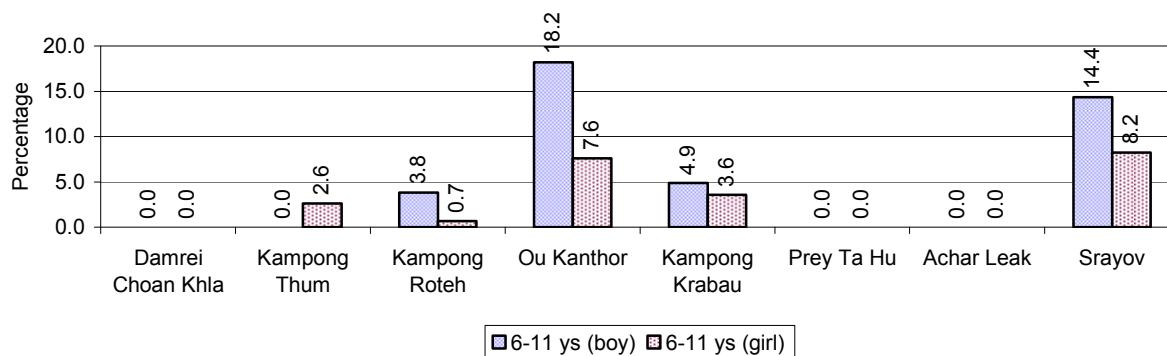
3.1.7 Enrolment status at Primary Level over 3 years

Description	2006 %	2007 %	2008	
			%	Number
Total children aged 6-11 years old	12%	12%	12%	6,493 person(s)
Total children aged 6-11 who are in school	89%	94%	93%	6,066 person(s)
Total children aged 6-11 who are not in school	11%	6%	7%	427 person(s)
Total girls aged 6-11 years old	12%	12%	11%	3,161 person(s)
Total girls aged 6-11 who are in school	90%	95%	96%	3,020 person(s)
Total girls aged 6-11 who are not in school	10%	5%	4%	141 person(s)
Total boys aged 6-11 years old	13%	13%	13%	3,332 person(s)
Total boys aged 6-11 who are in school	89%	93%	91%	3,046 person(s)
Total boys aged 6-11 who are not in school	11%	7%	9%	286 person(s)

Note 1: Percentage is calculated on the basis of the total number of children within 6-11 year age group for the first 3 rows and for the total girls and the total boys aged 6-11 yrs.

Note 2: Number of girls aged 6-11 who are in & not in school is calculated against the total number of girls aged 6-11 yrs. Number boys, 6-11 yrs who are in & not in school are calculated against the total number of boys aged 6-11 yrs.

3.1.8 Percentage of 6-11 year old Children not in School, by Commune, in 2008



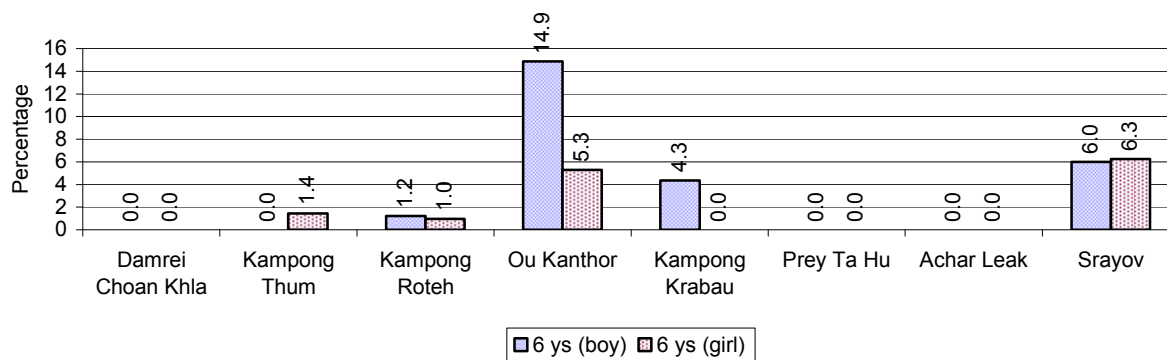
Note: calculated on the basis of the total number of children within 6-11 year age group in the commune.

3.1.9 Enrolment of 6 year old Children over 3 years

Description	2006 %	2007 %	2008	
			%	Number
Total % and number of children aged 6 years old	3%	2%	3%	1,338 person(s)
Total % of children aged 6 years old in school	92%	95%	96%	1,280 person(s)
Total % of children aged 6 years old not in school	8%	5%	4%	58 person(s)

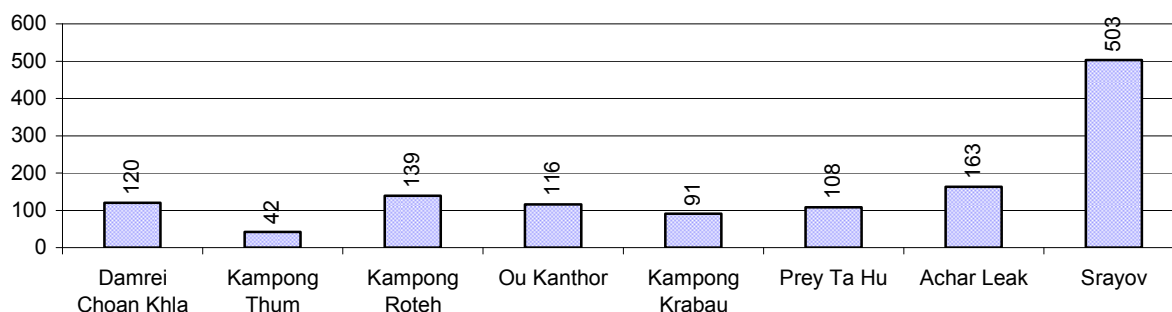
Note: First row calculated as a percentage of total population. Second and third row calculated as a percentage of the total number of 6 year olds.

3.1.10 Percentage of 6 year old Children not in School, by Commune, in 2008



Note: Calculated as a percentage of total 6 year old population

3.1.11 Number of 5 year old Children in each Commune in 2008

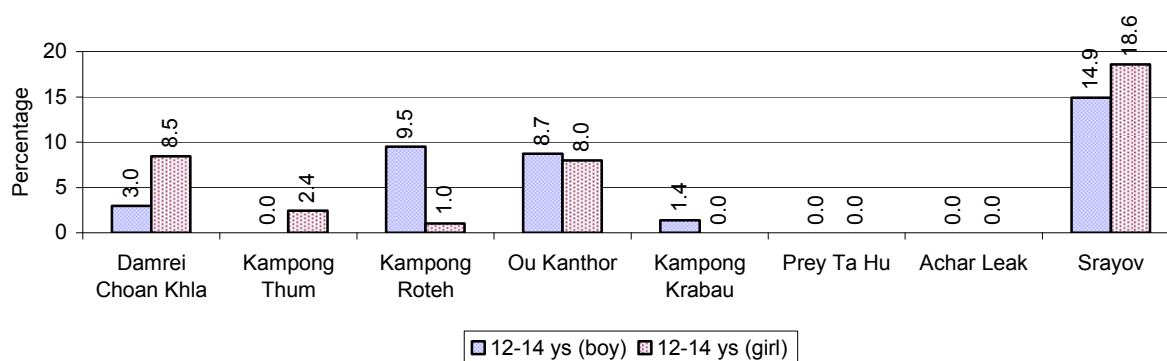


3.1.12 Enrolment at Lower Secondary Level over 3 years

Description	2006 %	2007 %	2008	
			%	Number
Total children aged 12-14 years old	8%	7%	7%	3,799 person(s)
Children aged 12-14 years old in school	88%	95%	92%	3,505 person(s)
Children aged 12-14 years old not in school	12%	5%	8%	294 person(s)
Total girls aged 12-14 years old	8%	7%	7%	1,892 person(s)
Girls aged 12-14 years old in school	88%	95%	92%	1,738 person(s)
Girls aged 12-14 years old not in school	12%	5%	8%	154 person(s)
Total boys aged 12-14 years old	8%	8%	7%	1,907 person(s)
Boys aged 12-14 years old in school	88%	96%	93%	1,767 person(s)
Boys aged 12-14 years old not in school	12%	4%	7%	140 person(s)

Note: Percentage is calculated on the basis of number of the total number of children within 12-14 yrs group, except for the first row of each section which is calculated on the basis of the total population.

3.1.13 Percentage of 12-14 year olds not in School, by Commune, in 2008



Note: Calculated as a percentage of the total 12-14 year old population in each commune

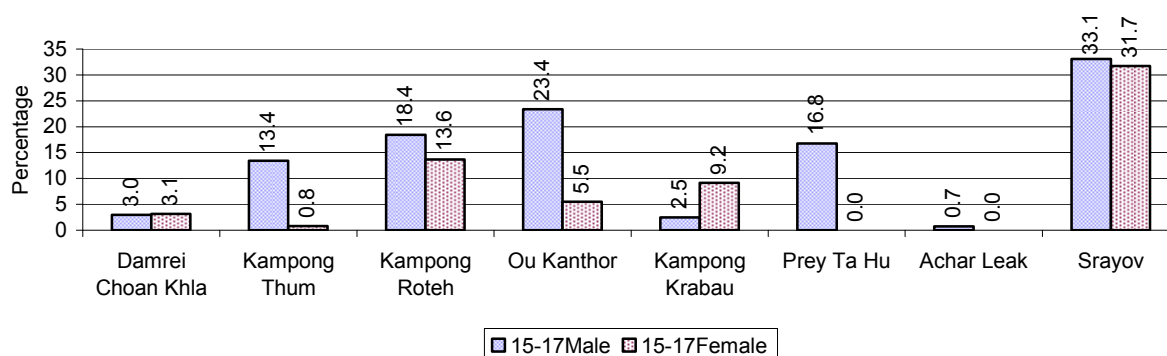
3.1.14 Upper Secondary Schools over 3 years

Description	2006	2007	2008
Number of upper secondary schools	2 school(s)	2 school(s)	2 school(s)
Number of upper secondary school rooms	42 room(s)	34 room(s)	51 room(s)
Number of upper secondary classes	56 class(es)	34 class(es)	70 class(es)
Number of upper secondary teachers	55 person(s)	56 person(s)	124 person(s)
Ratio of 15-17 yr olds to number of school	2,153	2,098	2,104
Ratio of 15-17 yr olds to number of school room	103	123	82
Ratio of 15-17 yr olds to number of classes	77	123	60
Ratio of 15-17 yr olds to number of teacher	78	75	34

3.1.15 Enrolment of 15-17 year old teenagers over 3 years

Description	2006	2007	2008
Number of teenage, 15-17 years old	4,306 person(s)	4,196 person(s)	4,207 person(s)
Number of teenage, 15-17 years old, who are not studying	878 person(s)	465 person(s)	659 person(s)
Percentage of teenage, 15-17 years old not studying	20%	11%	16%

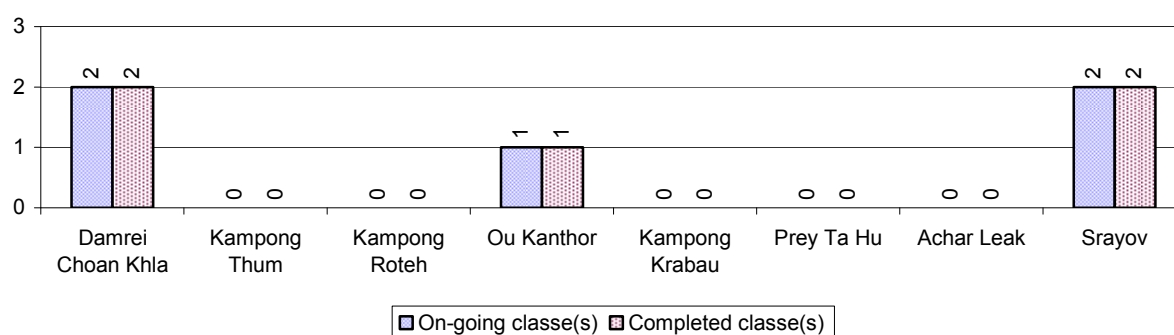
3.1.16 Percentage of 15-17 year old Teenagers not at School, by Commune, in 2008



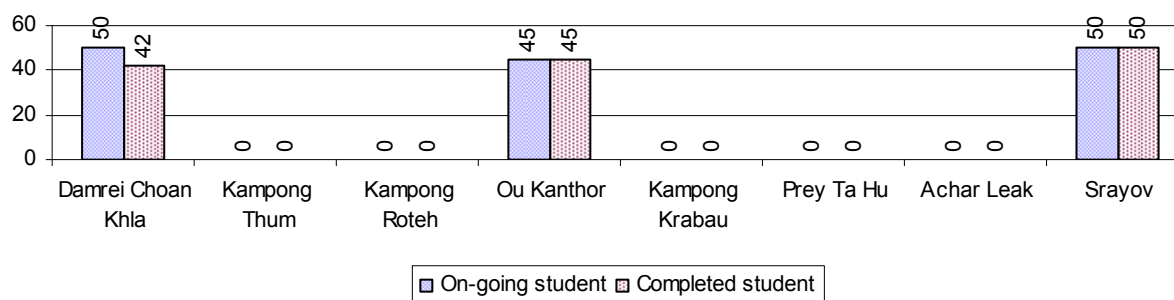
3.1.17 Literacy Classes as of 2008

Literacy classes	Organized by:		Other Program(s)	Total
	PDoEYS	NGOs		
Number of On-going literacy classes	5 class(es)	0 class(es)	0 class(es)	5 class(es)
Number of literacy students in on-going classes	145 person(s)	0 person(s)	0 person(s)	145 person(s)
Completed literacy class(es)	5 classes	0 classes	0 classes	5 classes
Number of literacy students that have completed literacy classes	137 person(s)	0 person(s)	0 person(s)	137 person(s)
Number of students that passed	129 person(s)	0 person(s)	0 person(s)	129 person(s)

3.1.18 Number of on-going and completed Literacy Classes, by Commune, in 2008



3.1.19 Students of on-going & completed Literacy Classes, by Commune, in 2008

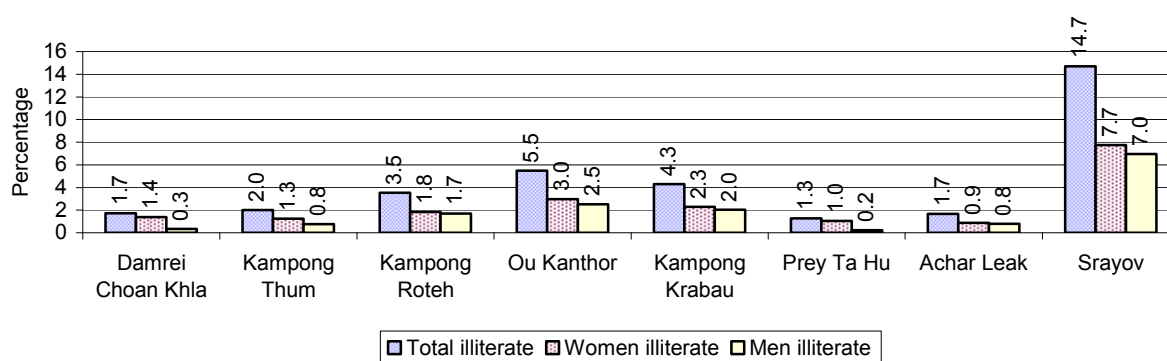


3.1.20 Percentage of illiterate People between 15-60, over 3 years

Illiteracy Status	2006 %	2007 %	2008	
			%	Number
Illiterate people, 15-60 years old	8%	6%	7%	2,273 person(s)
Illiterate females, 15-60 years old	4%	4%	4%	1,234 person(s)
Illiterate people, 15-17 years old	3%	2%	2%	82 person(s)
Illiterate females, 15-17 years old	1%	1%	1%	35 person(s)
Illiterate people, 18-24 years old	4%	3%	3%	262 person(s)
Illiterate females, 18-24 years old	2%	1%	2%	135 person(s)
Illiterate people, 25-60 years old	10%	9%	9%	1,929 person(s)
Illiterate females, 25-60 years old	6%	5%	5%	1,064 person(s)

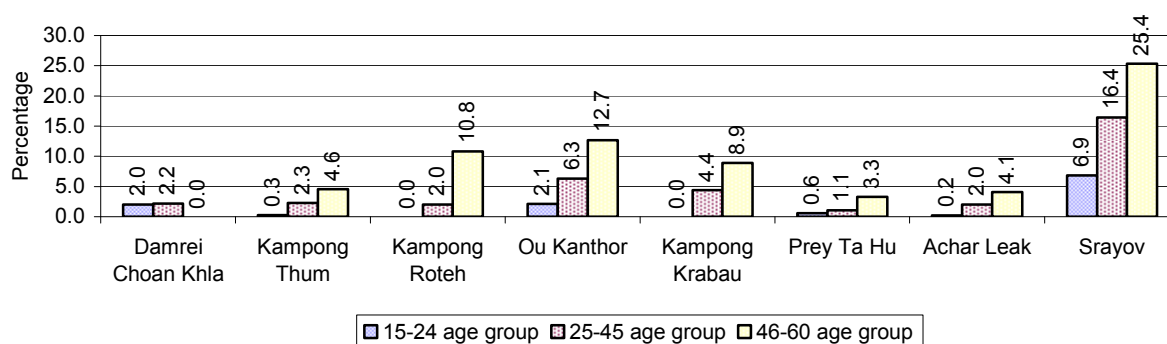
Note: Percentage is calculated on the basis of number of people in age each group.

3.1.21 Percentage illiterate People among 15-60 yrs old, by Commune, in 2008



Note: Percentages are calculated on the basis of number of people in that age group.

3.1.22 Percentage illiterate People for 15-24 yrs, 25-45 yrs and 46-60 yrs, by Commune, in 2008



Note: Percentage of illiterate people in each age group is calculated on the basis of number of people in that age group.

3.2 Health

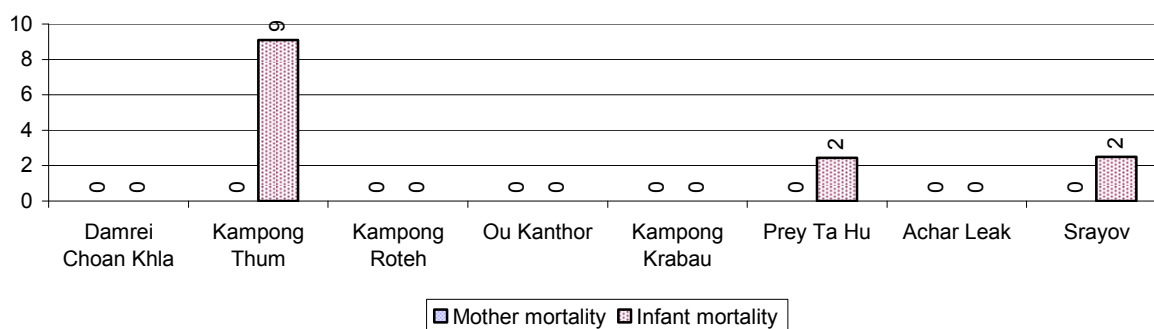
3.2.1 Health Situation of Women and Children, over 3 years

Description	2006	2007	2008
Number families with a birth during the year	585 families	519 families	771 families
Number of women who had their baby delivered by a TBA	260 person(s)	219 person(s)	327 person(s)
Percentage of women who had their baby delivered by a TBA	44 %	42 %	42 %
Number of women who had their baby delivered by a midwife	325 person(s)	300 person(s)	444 person(s)
Percentage of women had their baby delivered by a midwife	56 %	58 %	58 %
Number of mothers who died within 1 month of giving birth	2 person(s)	0 person(s)	0 person(s)
Mothers who died within 1 month of giving birth per 100,000 families having a delivery	342	0	0
Number of infants born during the year	585	520	772

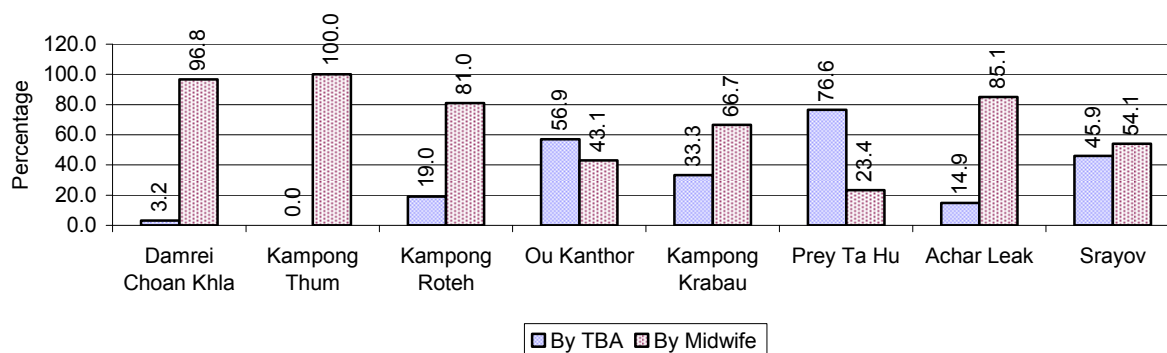
Description	2006	2007	2008
	person(s)	person(s)	person(s)
Number of Infants who died within 1 month	16 person(s)	12 person(s)	7 person(s)
Infants mortality within 1 month per 1,000 births	27	23	9
Number of children who died below the age of 5.	15 person(s)	6 person(s)	3 person(s)
Number of infants, aged 9-12 months, born during the year	461 person(s)	369 person(s)	455 person(s)
Nr. infants, aged 9-12 months, not receiving full immunization	33 person(s)	11 person(s)	14 person(s)
% of 9-12 months infants, not receiving full immunization	7 %	3 %	3 %

Note: TBA = Traditional Birth Attendant

3.2.2 Mothers dying within 0 days to 1 month of giving Birth and Infants dying within 1 month in 2008, by Commune

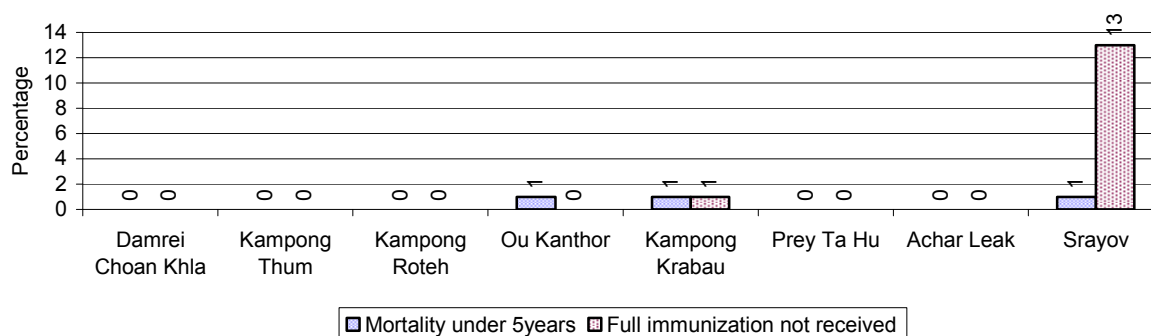


3.2.3 Percentage of Women delivering with a TBA or Midwife, by Commune



Note: Calculated as a percentage of total deliveries

3.2.4 Percentage of Children dying below 5 & of 9-12 months not receiving full Immunization, by Commune, in 2008



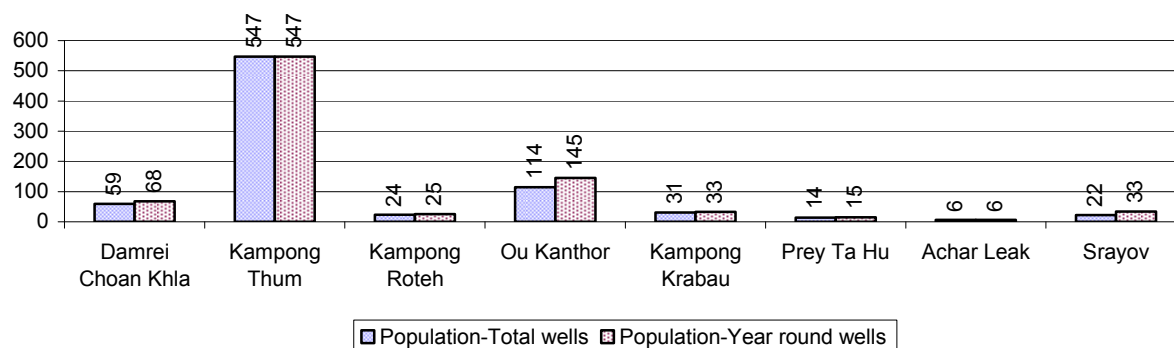
Note: Mortality rate calculated as a percentage of the total 5 year old population. Lack of immunization received calculated as a percentage of the total number 9-12 months olds there are

3.3 Water and Sanitation

3.3.1 Number of different types of Wells over 3 years

Type of wells	Number of wells by year		
	2006	2007	2008
<i>Total number of pumped or mixed wells</i>	1,378	1,772	1,683
Year-round usable pumped or mixed wells	1,155	1,568	1,466
Dry season unusable pump or mixed wells	223	204	217
Pump or mixed wells needing repair/rehabilitation	155	163	156
<i>Total number of ring wells</i>	915	1,027	1,004
Year-round usable ring wells	592	817	822
Dry season unusable ring wells	323	210	182
Ring wells needing repair/rehabilitation	343	225	236
<i>Total number of unprotected dug wells</i>	440	338	328
Year-round usable unprotected dug wells	243	181	166
Dry season unusable unprotected dug wells	197	157	162

3.3.2 Ratio of People to Wells, by Commune, in 2008

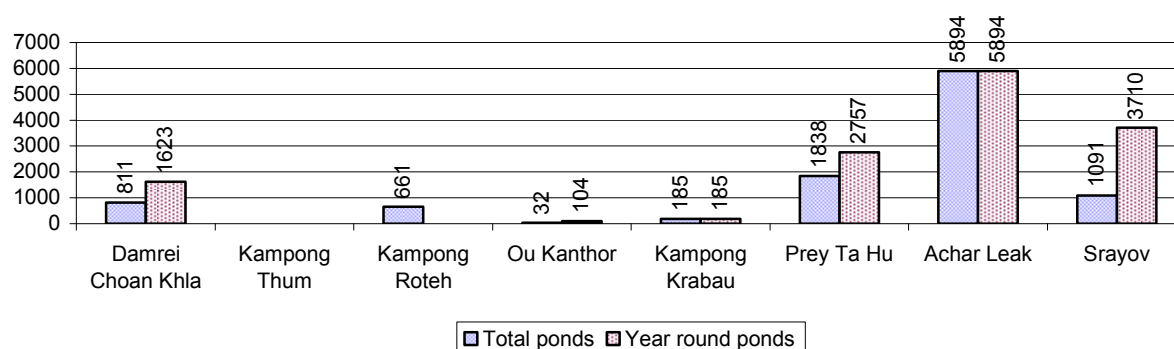


Note: Year-round wells excluding unprotected wells

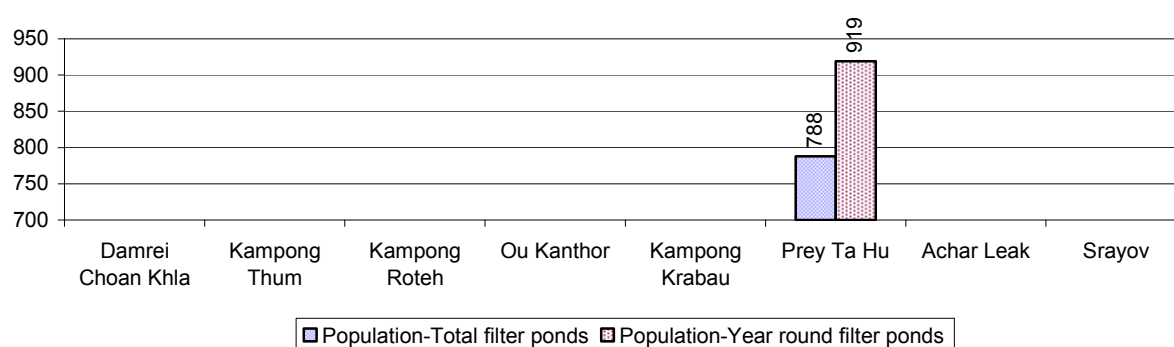
3.3.3 Potable Ponds over 3 years

Type of Pond	2006	2007	2008
<i>Total number of normal-type ponds</i>	96 pond	214 pond	213 pond
Year-round usable normal-type ponds	17 pond	71 pond	84 pond
Dry season unusable normal-type ponds	79 pond	143 pond	129 pond
Normal-type ponds needing repair/rehabilitation	28 pond	89 pond	91 pond
<i>Total number of filter ponds</i>	1 pond	1 pond	7 pond
Year-round usable filter ponds	0 pond	0 pond	6 pond
Filter ponds, dry season unusable	1 pond	1 pond	1 pond
Filter ponds needing repair/rehabilitate	1 pond	7 pond	1 pond

3.3.4 Ratio of People to normal Ponds, by Commune in 2008



3.3.5 Ratio of People to Filter Ponds, by Commune, in 2008

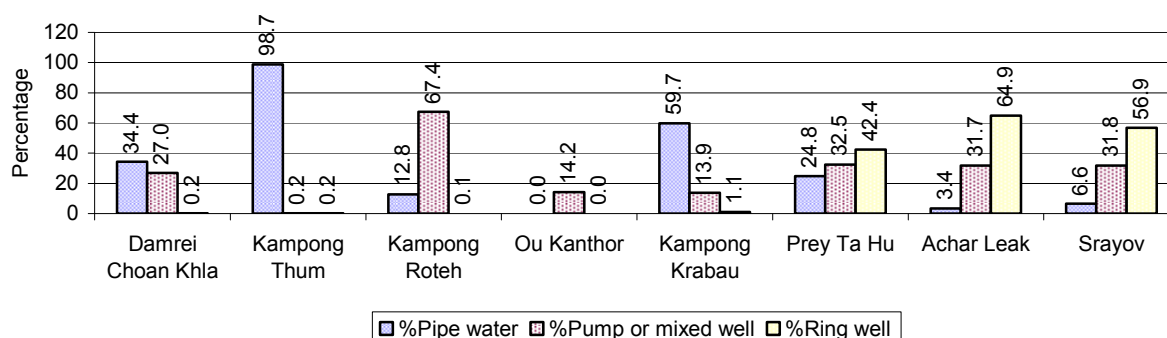


3.3.6 Source of potable Water for Households, over 3 years

Water sources	2006 %	2007 %	2008	
			%	Number
Families using water from purification system	20%	17 %	21 %	2,280 families
Families using water from pump, mixed wells	30%	29 %	30 %	3,320 families
Families using water from ring wells and open dug wells	30%	37 %	32 %	3,564 families
Families using water from pond	3%	3 %	3 %	341 families
Families using water from rain water storage	0%	0 %	0 %	22 families
Families using water from rivers, lakes, natural ponds and reservoirs	17%	14 %	14 %	1,583 families

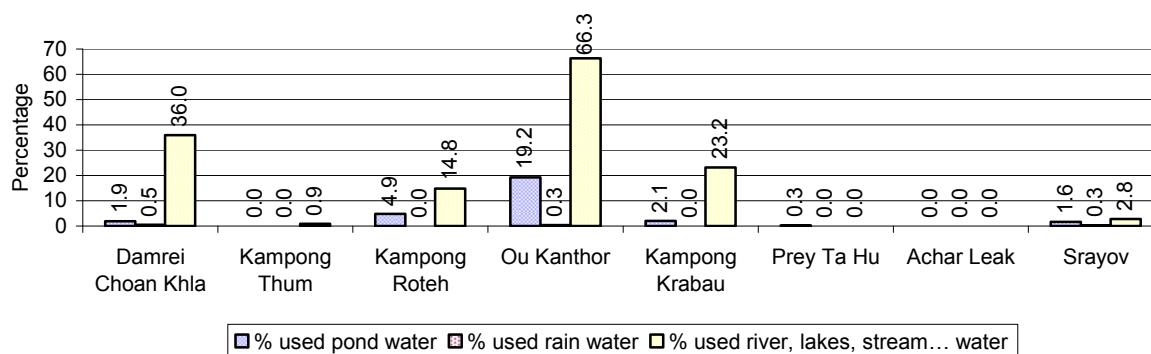
Note: Calculated as a percentage of the total number of families.

3.3.7 Percentage Families using different Water Sources, by Commune, in 2008



Note: Calculated as a percentage of the total number of families in each commune

3.3.8 Percentage Families using Water from Rain Water Storage, Ponds and natural Sources (rivers/lakes/natural ponds/reservoirs), by Commune, 2008



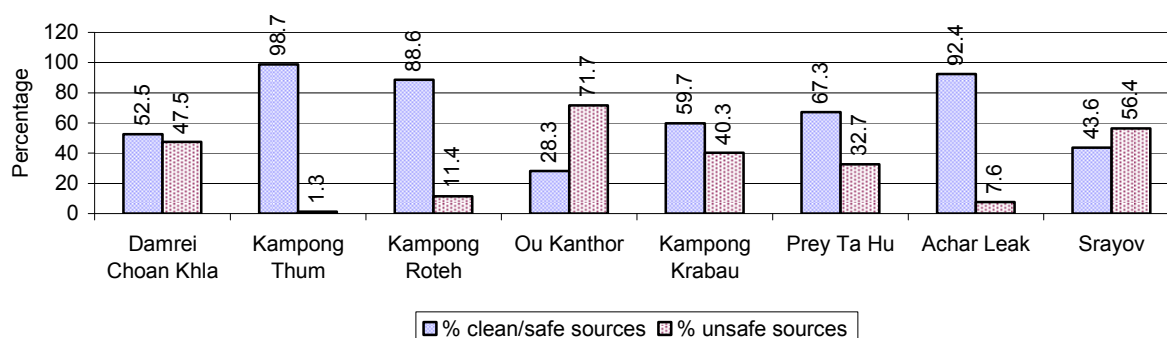
Note: Calculated as a percentage of the total number of families in each commune

3.3.9 Drinking Water Sources in the dry Season over 3 years

Percentage Families that get drinking water from:	2006	2007	2008	
	%	%	%	Number
from clean/safe sources	55 %	55 %	60 %	6,625 families
from unsafe sources	45 %	45 %	40 %	4,485 families

Note: Calculated as a percentage of the total number of families.

3.3.10 Percentage Families using safe and unsafe Water Sources in the dry Season, by Commune, in 2008



Note: Calculated as a percentage of the total number of families in each commune.

3.3.11 Drinking Water Purification by Households, over 3 years

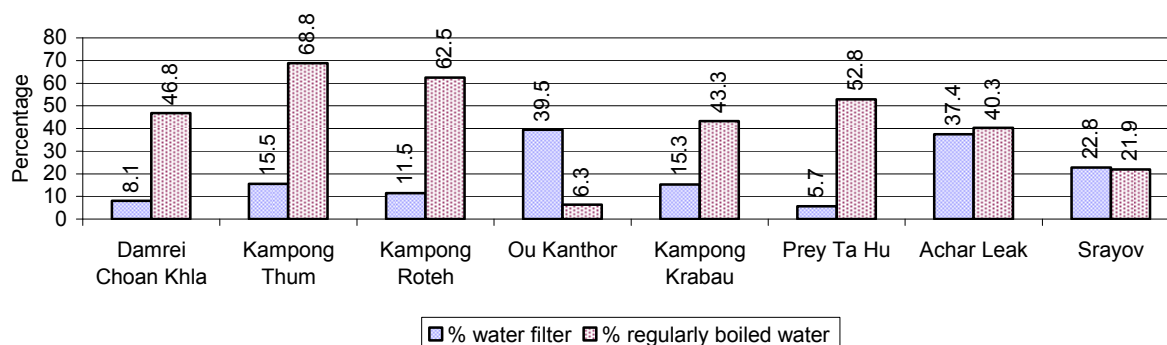
This table shows the different ways families make water safe for drinking.

Families, who:	2006 %	2007 %	2008	
			%	Number
Filter water for drinking	15%	19%	20 %	2,277 families
Boil water for drinking	34%	37%	37 %	4,064 families

Note: Calculated as a percentage of the total number of families

3.3.12 Percentage Families filtering Water or regularly boiling Water, by Commune, in 2008

This graph shows the different ways families make drinking water safe.



Note: Calculated on as a percentage of the total number of families in each commune.

3.3.13 Families' access to Water, over 3 years

Families access to water	2006 %	2007 %	2008	
			%	Number
Families with water at home or in less than 150m	36%	34%	73 %	8,075 families
Families with water 150m or more away from home	10%	10%	26 %	2,897 families

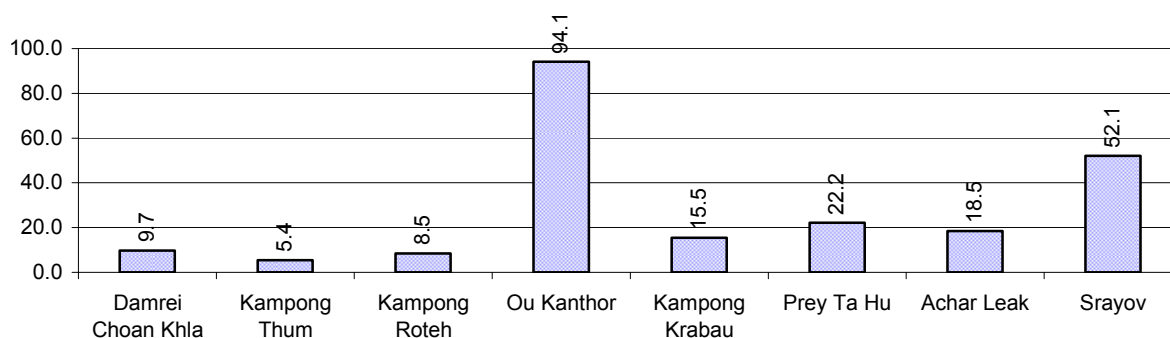
Note: Calculated as a percentage of the total number of families

3.3.14 Ratio of people to Latrines over 3 years

Description	2006 Ratio	2007 Ratio	2008	
			Ratio	Number
Ratio of people to latrines	21.3	18.4	17.8	3,008.0

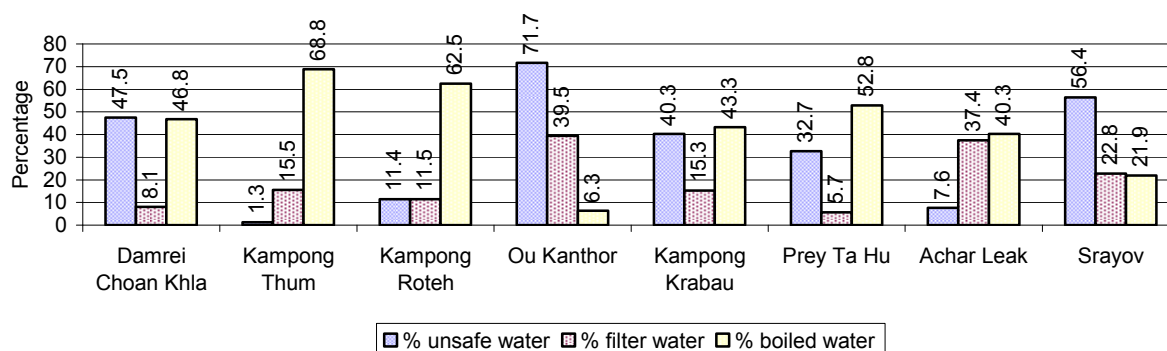
Note: Ratio calculated by dividing the number of houses with latrines by the total population

3.3.15 Ratio of People to Latrines, by Commune, in 2008



Note: Ratio calculated by dividing the number of houses with latrines by the total population in a Commune.

3.3.16 Percentage of Families drinking boiled, filtered or unsafe Water, by Commune, in 2008



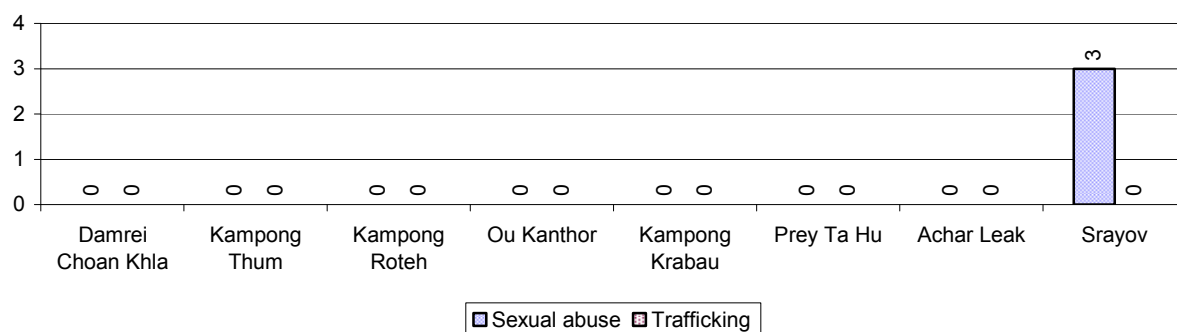
Note: Calculated as a percentage of the total number of families in each commune.

3.4 Vulnerable groups

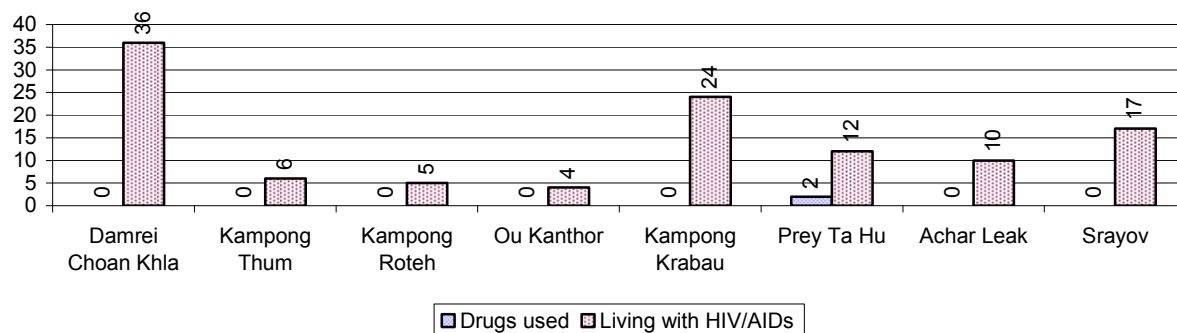
3.4.1 Vulnerable Groups in need of special Protection over 3 years

Vulnerable groups	2006	2007	2008
Victims of sexual abuse	3 person(s)	3 person(s)	3 person(s)
Victims of human trafficking	0 person(s)	0 person(s)	0 person(s)
Families with family member(s) using drugs	4 families	10 families	2 families
Families with family member(s) living with HIV/AIDS	56 families	77 families	114 families
Children under 18 yrs old whose parent died of AIDS	76 person(s)	112 person(s)	161 person(s)
Orphaned/abandoned children under 18 yrs old (all cases)	209 person(s)	313 person(s)	306 person(s)
Elderly persons without guardian	203 person(s)	152 person(s)	132 person(s)
Disabled people able to earn an income	88 person(s)	90 person(s)	95 person(s)
Disabled people unable to earn an income	69 person(s)	98 person(s)	75 person(s)
Disabled people under 18 yrs old	52 person(s)	44 person(s)	23 person(s)
Victims of natural disasters	313 families	1,161 families	498 families
Victims of land mines and unexploded weapons	4 person(s)	7 person(s)	3 person(s)

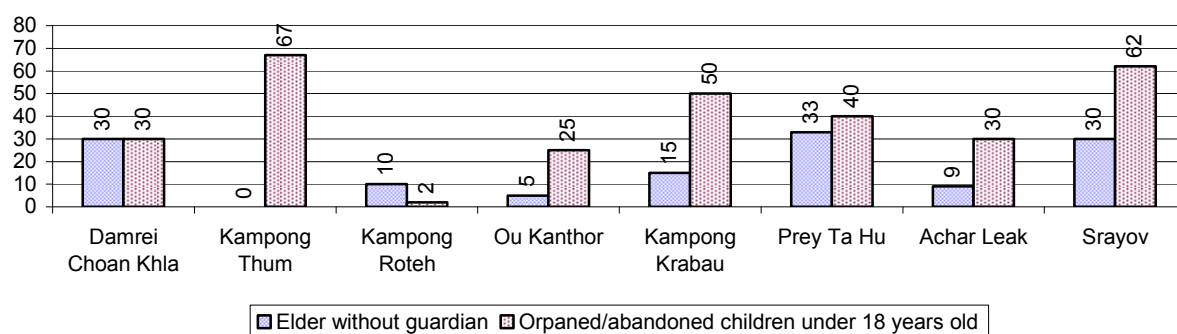
3.4.2 Registered Victims of sexual Abuse or Trafficking, by Commune, for 2008



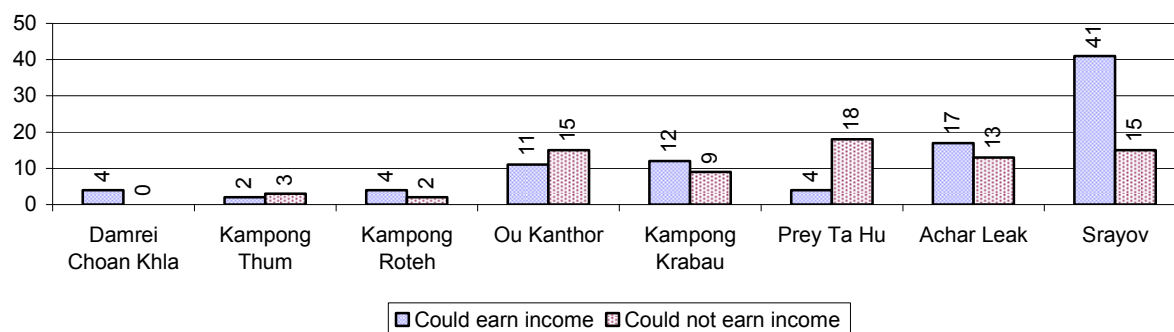
3.4.3 Registered Families with Member(s) using Drugs or living with HIV/AIDS, by Commune, for 2008



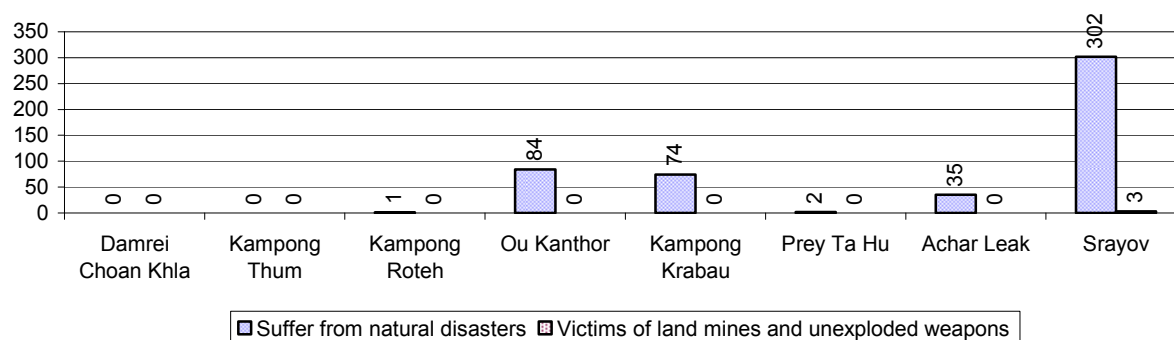
3.4.4 Elderly Persons without a Guardian and orphaned/abandoned Children under 18 years old, by Commune, for 2008



3.4.5 Number of disabled People who could or could not earn an Income, by Commune, for 2008



3.4.6 Number of Families who suffered from natural Disasters, and number of Victims of Land Mines and unexploded Weapons, by Commune, in 2008



3.5 Migration

3.5.1 Migration over 3 years

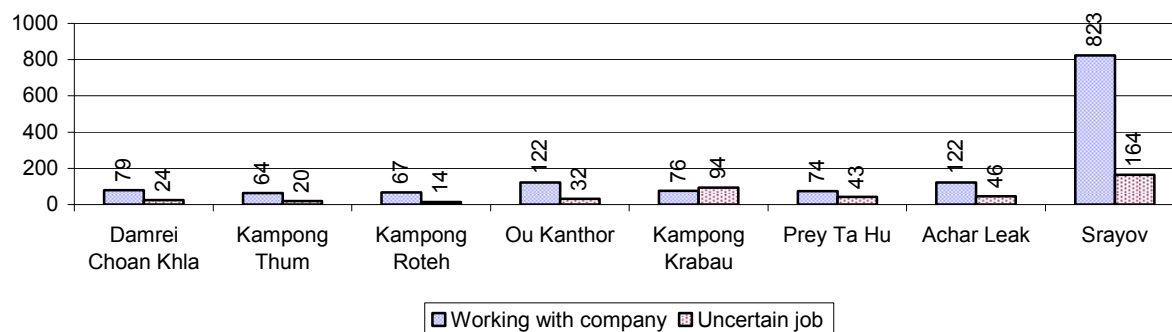
Description	2006	2007	2008
Number of families permanently in-migrated	73 families	82 families	75 families
Total number of people	265 person(s)	298 person(s)	333 person(s)
Total number of female	149 person(s)	159 person(s)	174 person(s)
Number of families permanently out-migrated	70 families	71 families	73 families
Total number of people	269 person(s)	283 person(s)	303 person(s)
Total number of female	134 person(s)	145 person(s)	169 person(s)
Number of families staying temporarily	106 families	112 families	138 families
Total number of people	364 person(s)	400 person(s)	545 person(s)
Total number of female	185 person(s)	182 person(s)	238 person(s)

3.5.2 Job Migration

Description	2006	2007	2008
Number of people migrated to work with company/factory	4%	5%	5%
Number of people migrated to work, but have uncertain jobs	2%	2%	2%

Note: Calculated as a percentage of the total population of 18-60 year olds

3.5.3 Number of People working outside their home Villages in a Company/Factory or with an uncertain Job in 2008

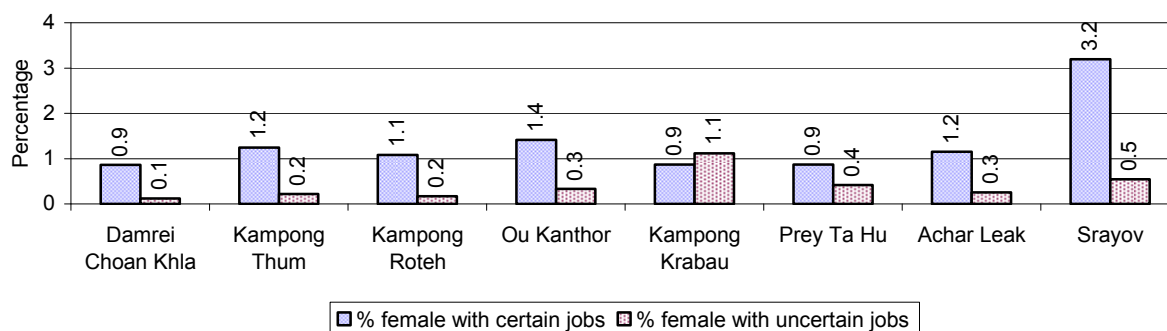


3.5.4 Female migration over 3 years

Description	2006 %	2007 %	2008	
			%	Number
Total number of migrants	3.3%	3.4%	3.5%	1,864 person(s)
Number of female migrants	2.3%	2.4%	2.2%	1,190 person(s)
Total number of migrants, who go to work with company/factory (with certain jobs)	2.4%	2.6%	2.7%	1,427 person(s)
Number of female migrants with certain jobs	1.9%	2.0%	1.8%	959 person(s)
Total number of migrants with uncertain jobs	0.9%	0.8%	0.8%	437 person(s)
Number of female migrants with uncertain jobs	0.5%	0.4%	0.4%	231 person(s)

Note: Calculated as a percentage of the total population

3.5.5 Percentage female Migrants with certain and uncertain Jobs, by Commune, in 2008



Note: Calculated as a percentage of the total population of the commune

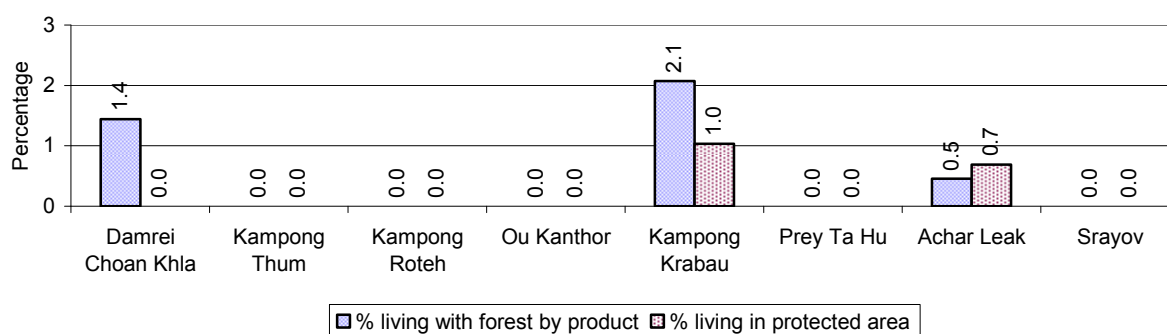
4 Natural Resources and Environment (NRE)

4.1 Families involved with NRE issues over 3 years

Description	2006 %	2007 %	2008	
			%	Number
Families living with forest by products	0 %	0 %	0 %	45 families
Families living in a protected area	1 %	0 %	0 %	19 families
Houses with access to garbage collection service	4 %	4 %	3 %	388 families
Families affected by environmental pollution	1 %	1 %	2 %	194 families
Families using chemical fertilizer	5 %	5 %	4 %	492 families
Families using chemical pesticide	5 %	6 %	6 %	618 families

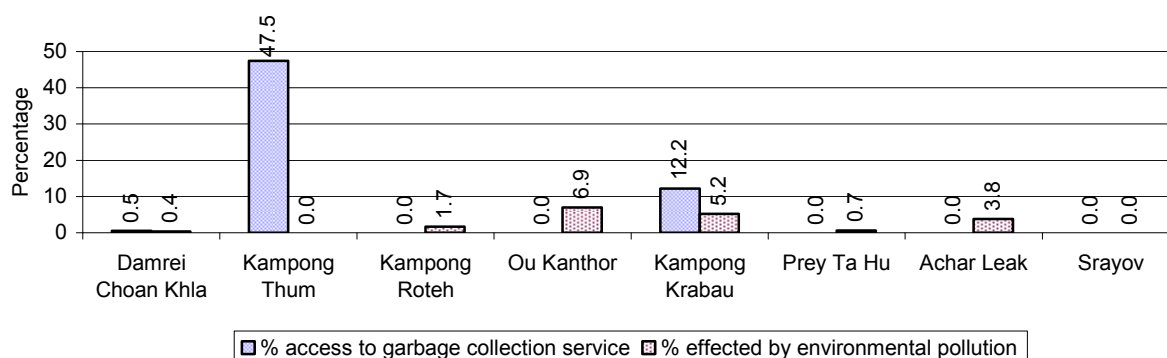
Note: Calculated as a percentage of the total number of families

4.2 Percentage of Families involved with Natural Resource issues, by Commune, for 2008



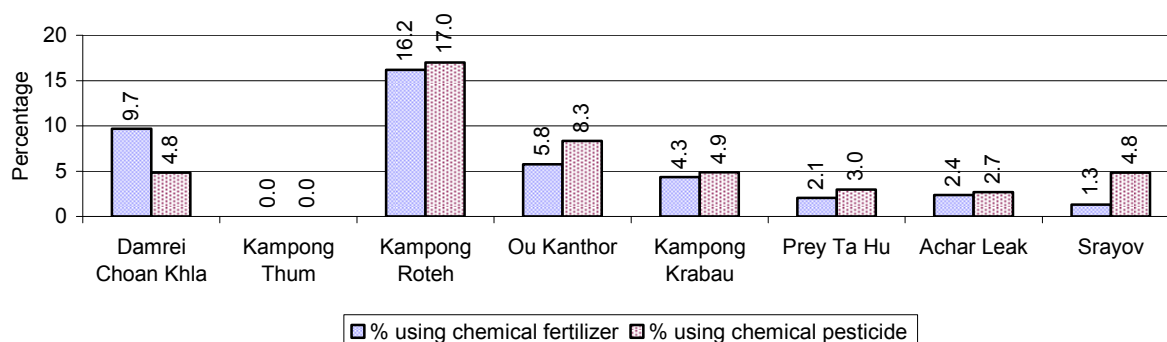
Note: Calculated as a percentage of the number of families in each commune

4.3 Percentage Houses with access to Garbage collection and Families affected by environmental Pollution, by Commune, for 2008



Note: Garbage collection is calculated as a percentage of the total number of houses in each commune and families affected by environmental pollution is calculated as a percentage of the total number of families in each commune.

4.4 Percentage Families using chemical Fertilizer and chemical Pesticides, by Commune, for 2008



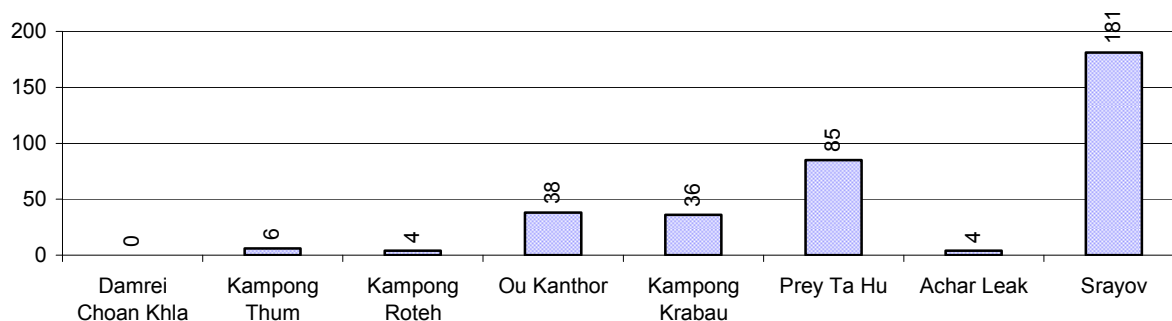
Note: Calculated as a percentage of the total number of families in each commune

5 Administration and Security

5.1 Birth Registration across 3 years

Description	2006	2007	2008
Number of infants to be registered	569 person(s)	508 person(s)	765 person(s)
Number of unregistered infants the year	154 person(s)	178 person(s)	354 person(s)
Percentage of infants unregistered	27 %	35 %	46 %

5.2 Number of unregistered Infants born in 2008, by Commune

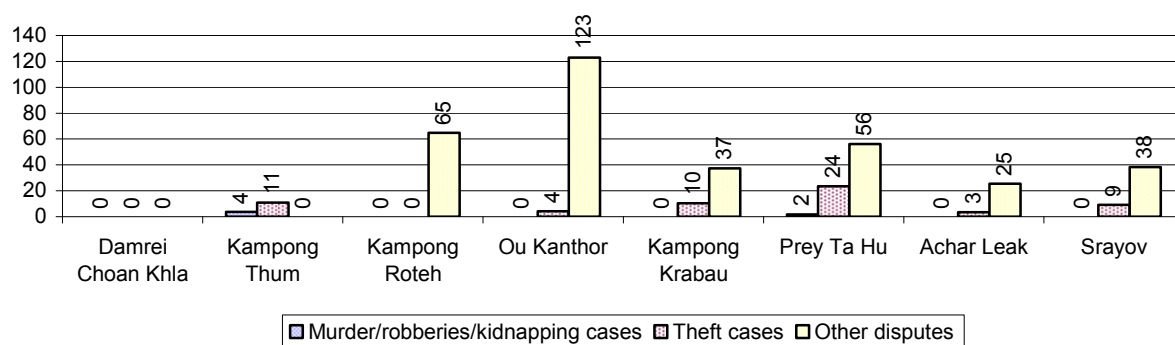


5.3 Registered criminal Cases over 3 years

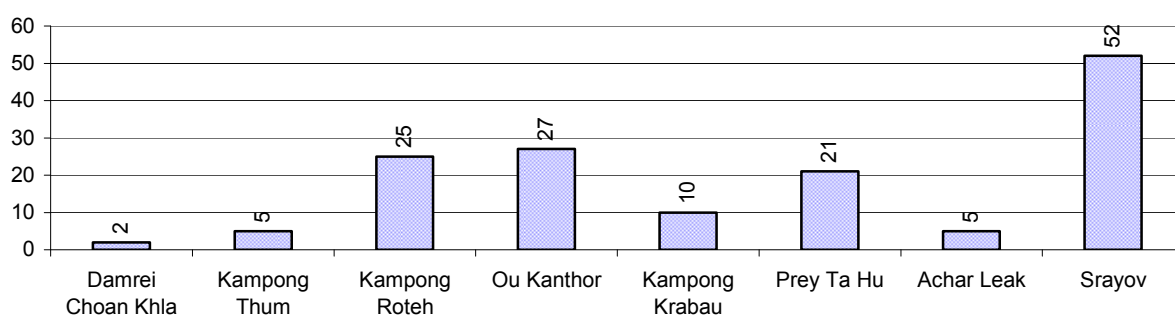
Description	2006	2007	2008
Murders, robberies and kidnapping cases	3 case(s)	3 case(s)	2 case(s)
Theft cases	114 case(s)	63 case(s)	42 case(s)
land dispute cases	168 case(s)	159 case(s)	147 case(s)
Other disputes cases	202 case(s)	274 case(s)	224 case(s)

Note: this reflects only registered criminal cases

5.4 Registered criminal Cases per 10,000 people, by Commune, for 2008



5.5 Number of registered Land Disputes, by Commune, in 2008

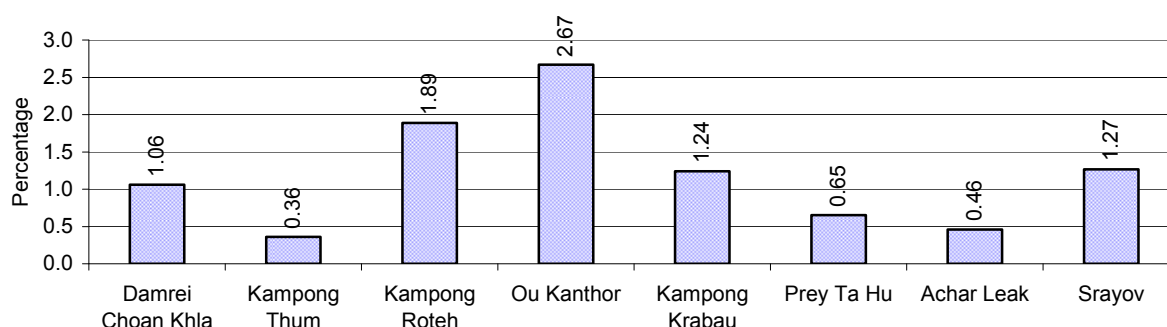


6 Gender

6.1 Registered Domestic Violence over 3 years

Description		2006	2007	2008
Families experiencing domestic violence		155 families	150 families	135 families(s)
% families experiencing domestic violence		1 %	1 %	1 %
Domestic violence cases reported by village chiefs		170 case(s)	95 case(s)	100 case(s)
Type	Physical violence	82 case(s)	50 case(s)	40 case(s)
	Sexual violence	4 case(s)	1 case(s)	6 case(s)
	Mental violence	69 case(s)	25 case(s)	35 case(s)
	Household economic violence	15 case(s)	19 case(s)	19 case(s)
Number of administrative decisions on domestic violence		146 case(s)	75 case(s)	88 case(s)
% of administrative decisions on domestic violence		86 %	79 %	88 %

6.2 Percentage of registered cases of Families experiencing domestic Violence, by Commune, in 2008



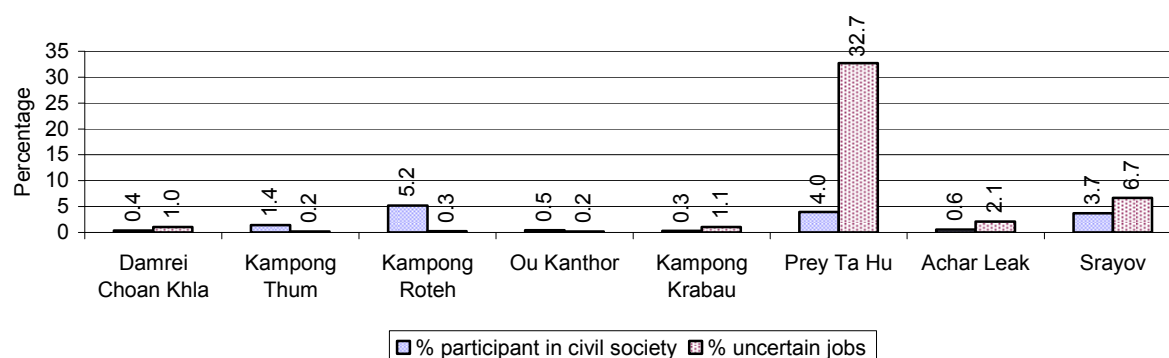
Note: Calculated as a percentage of the total number of families in each commune

6.3 Women's involvement over 3 years

Description	2006 %	2007 %	2008	
			%	Number
People participating in civil society	12%	10%	4%	2,310 person(s)
Women participating in civil society	6%	5%	2%	1,282 person(s)
People, 18-60 yrs, with uncertain/irregular jobs	4%	8%	10%	3,019 person(s)
Women, 18-60 yrs, with uncertain/irregular jobs	2%	4%	5%	1,571 person(s)

Note: Participation can be in NGOs, CBOs, credit groups, women's unions, parties and other civil society organizations. The first section is calculated as a percentage of the total population. The second section is calculated as a percentage of the total 18-60 year old population.

6.4 Percentage of Female Participants in Civil Society and of 18-60 year women with uncertain Jobs, by Commune, in 2008



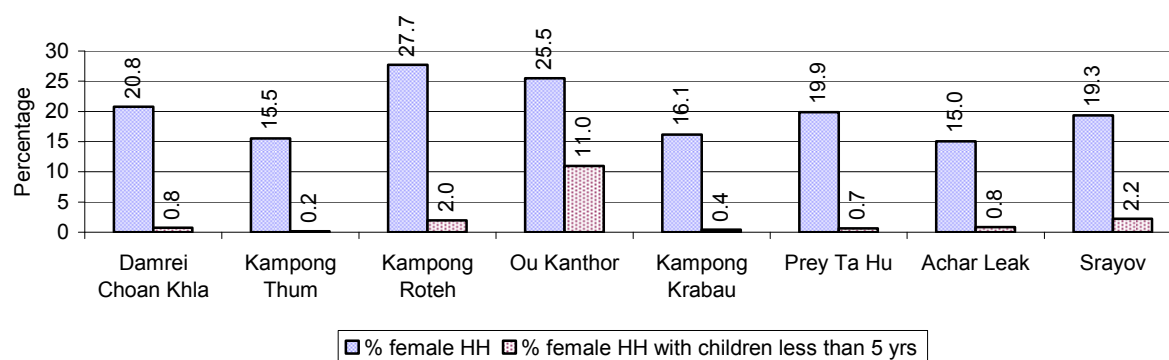
Note: Percentage of female participants in civil society is calculated as a percentage of the total population per commune. The percentage of 18-60 years old women with uncertain jobs is calculated as a percentage of the total 18-60 year old population per commune.

6.5 Female-headed Households over 3 years

Families with:	2006	2007	2008	
	%	%	%	Number
Households in which a woman is the family head	19%	19%	20%	2,206 families
Households in which a woman is the family head with children of less than 5 yrs	2%	3%	2%	244 families

Note: Calculated as a percentage of the total number of families

6.6 Percentage female-headed Households and with Children of less than 5 years old, by Commune, in 2008



Note: Calculated as a percentage of the total number of families in each commune
HH: Headed Household

7 Indigenous People in the District

7.1 Ethnic Minorities in the District over 3 years

Race of indigenous	2006		2007		2008	
	# families	# population	# families	# population	# families	# population
Phnong	0 families	0 person(s)	0 families	0 person(s)	0 families	0 person(s)
Kouy	0 families	0 person(s)	0 families	0 person(s)	0 families	0 person(s)
Stieng	0 families	0 person(s)	0 families	0 person(s)	0 families	0 person(s)
Mil	0 families	0 person(s)	0 families	0 person(s)	0 families	0 person(s)
Kroal	0 families	0 person(s)	0 families	0 person(s)	0 families	0 person(s)
Thmorn	0 families	0 person(s)	0 families	0 person(s)	0 families	0 person(s)
Khaonh	0 families	0 person(s)	0 families	0 person(s)	0 families	0 person(s)
Tompouonn	0 families	0 person(s)	0 families	0 person(s)	0 families	0 person(s)
Charay	0 families	0 person(s)	0 families	0 person(s)	0 families	0 person(s)
Kroeung	0 families	0 person(s)	0 families	0 person(s)	0 families	0 person(s)
Kavet	0 families	0 person(s)	0 families	0 person(s)	0 families	0 person(s)
Saouch	0 families	0 person(s)	0 families	0 person(s)	0 families	0 person(s)
Lun	0 families	0 person(s)	0 families	0 person(s)	0 families	0 person(s)
Kachak	0 families	0 person(s)	0 families	0 person(s)	0 families	0 person(s)
Praov	0 families	0 person(s)	0 families	0 person(s)	0 families	0 person(s)
Others	0 families	0 person(s)	0 families	0 person(s)	0 families	0 person(s)
Total	0 families	0 person(s)	0 families	0 person(s)	0 families	0 person(s)

Note: "Others" refer to other ethnic groups which are not listed.

7.2 Other Minorities in the District over 3 years

Minority	2006		2007		2008	
	# families	# population	# families	# population	# families	# population
Khmer Islamic	22 families	127 person(s)	21 families	88 person(s)	21 families	126 person(s)
Vietnamese	14 families	60 person(s)	13 families	44 person(s)	13 families	49 person(s)
Laos	0 families	0 person(s)	0 families	0 person(s)	0 families	0 person(s)

Note: Number of indigenous and minority population are additional data, so some village may not recorded.

SECTION C: PLANS AND PROJECTS

8 Priorities and Plans

8.1 Priorities of Commune Councils for 2009 in the District by Sector

The District Priority Activity Matrix (DPAM) data are taken from the CDPD. The DPAM is used for the District Integration Workshop (DIW), to show what kind of projects the commune has proposed in their Commune Investment Plan (CIP) for 2009. Donors, departments and other agencies then consider which projects they want to support and which projects they are not interested in. This results in Temporary Agreements between the Commune Council and the Supporter (NGO, Department, private donor, etc), as shown in table 8.2

No.	Project Name	Damrei Choan Khla	Kampong Thum	Kampong Roteh	Ou Kanthor	Achar Leak	Kampong Krabau	Srayov	Prey Ta Hu	Req.Project
		60301	60302	60303	60304	60309	60306	60310	60308	Total
Economic										
1	Compost fertilizer training	1 training								1
2	Mixed farming system training				5 training					1
3	Rice cultivation technique training	3 training				3 training				2
4	Animal vaccination request					3 training	3 training		6 training	3
5	Animal raising training								3 training	1
6	Rice seed request			3750 Kg			3 training	13000 Kg		3
7	Calf for raising request							13 Head	15 Head	2
8	Sow for raising request								45 Head	1
9	Fish raising training					3 training				1
10				2645 m	2200 m		1200 m	9025 m	2000 m	5
11			200 m							1
12			400 m							1
13						1000 m				1
14		600 m				1500 m				2
15						3 place		17 place		2
16				2670 m	2100 m					2
17		500 m		3970 m			1 place			3
18							3 place			1
19						1000 m	440 m			2
20		600 m						315 m		2
21	Cash credit		30 family	140 family						2
22	Rice seed bank								2000 Kg	1
23	Electricity supply		4 village		2301 m					2

District Data Book 2009: Development Plans and Projects

No.	Project Name	Damrei Choan Khla	Kampong Thum	Kampong Roteh	Ou Kanthor	Achar Leak	Kampong Krabau	Srayov	Prey Ta Hu	Req.Project
		60301	60302	60303	60304	60309	60306	60310	60308	Total
Social										
1	Family planning								3 training	1
2	Antenatal care					42 person				1
3	Women and child health care program		5 time						3 time	2
4	HIV/AIDS awareness education	4 training							3 training	2
5	Health/hygiene education for local people						3 training			1
6	Sexual worker health education campaign	2 training								1
7	Children immunization provision	4 training	5 training			3 training	3 training		6 training	5
8	Children and women vaccination			12 Month						1
9	Antenatal vaccination provision		5 training							1
10	Mosquito larvae removal treatment								3 time	1
11	Mosquito insecticide spraying campaign		3 time							1
12	Breastfeeding awareness education	4 training								1
13	Latrine construction	910 toilet		10 toilet	171 toilet	60 toilet		195 toilet	30 toilet	6
14	Sanitation education	12 Month								1
15	KMeragppl;meFüa)aycMeraHTwks¥at					100 tank		240 tank		2
16	KMeragpÁt;pÁg;Twks¥at						1500 m			1
17					158 well					1
18			2 well			50 well	10 well			3
19								195 well	30 well	2
20	School renovation			3 building						1
21	School office construction		1 building							1
22	School building		3 building					1 building		2
23	Kindergarten school construction/repair			3 room	4 room		1 class			3
24	Motivating pupil's parents for	4 time				2 time	3 time	5 time		4

District Data Book 2009: Development Plans and Projects

No.	Project Name	Damrei Choan Khla	Kampong Thum	Kampong Roteh	Ou Kanthor	Achar Leak	Kampong Krabau	Srayov	Prey Ta Hu	Req.Project
		60301	60302	60303	60304	60309	60306	60310	60308	Total
	school enrollment									
25	School enrollment encouragement project	4 training								1
26	School materials support to poor pupils					20 person				1
27	Food/meal provision to school children						110 person			1
28	Scholarship provision to poor pupils					20 person				1
29	Vocational training					3 training				1
30	Food/materials support to orphan	9 person		21 person						2
31	Vulnerable people aid/support	12 Month								1
32	House for the poor construction/repairing	2 building								1
NREM										
1	Environmental awareness and law education	4 training				3 training	3 training	5 training	1 training	5
2	Fishery law education	4 training					3 training	5 training		3
3	Education on the effect of polluted water	3 training			5 training			5 training		3
4	Illegal fishing prevention				5 training					1
5	Drainage system rehabilitation		890 m			1500 m				2
6	Waste dumping creation/improvement		5 place							1
7	Public rubbish bin sitting			20 Container						1
8	New sewage system construction		200 m							1
9	Sewage canal construction/rehabilitation			2662 m					305 m	2
10	Market/urban place sanitation control								1 training	1
11	Drainage canal construction/rehabilitation								400 m	1
12	Environmental pollution reduction	3 training								1

District Data Book 2009: Development Plans and Projects

No.	Project Name	Damrei Choan Khla	Kampong Thum	Kampong Roteh	Ou Kanthor	Achar Leak	Kampong Krabau	Srayov	Prey Ta Hu	Req.Project
		60301	60302	60303	60304	60309	60306	60310	60308	Total
13	Family waste bin encouragement		2 Container							1
14	Waste management education								1 training	1
Administration and Security										
1	Civil registration encouragement	4 time				12 time	3 time			3
2	CC capacity strengthening	1 training			5 training	2 training	3 training	2 training	1 training	6
3	Good governance training					1 training				1
4	Facilitation skills training					1 training				1
5	Conflict resolution training							2 training	1 training	2
6	Computer skill training for commune clerk								2 training	1
7	Commune office construction/renovation		1 building	1 building	1 building				1 building	4
8	Transportation mean requesting								1 set	1
9	Land law dissemination	4 training					3 training	5 training		3
10	Provision of land titles/certificates		0 family							1
11	Land conflict resolution committee strengthening							5 training		1
12	People guard activities formation/strengthening						3 training			1
13	Local security strengthening			2 Tree						1
14	Gambling control/elimination activation							5 training		1
15	Gangs gathering educated for local security			2 village						1
16	Drug business/use prevention						3 training			1
17	Abused/violated/illegal acts quelled activation		7 time							1
18	Local police capacity building/strengthening								1 training	1
19	Traffic accident prevention		7 time			6 time				2
20	Law/regulation dissemination								1 training	1
21	Human right and related law education		7 training							1

District Data Book 2009: Development Plans and Projects

No.	Project Name	Damrei Choan Khla	Kampong Thum	Kampong Roteh	Ou Kanthor	Achar Leak	Kampong Krabau	Srayov	Prey Ta Hu	Req.Project
		60301	60302	60303	60304	60309	60306	60310	60308	Total
22	Penal and civil law dissemination						3 training			1
23	Traffic law and public order dissemination					12 time	3 time			2
24	Village youth association formation/support	4 Team								1
25	Poor household listing preparation/support								730 family	1
Gender										
1	Gender mainstreaming in CIP							5 training		1
2	Women role in development strengthening/dissemination		5 training							1
3	Women capacity building for social participation		5 training	10 training		3 training				3
4	Women leadership strengthening/capacity building				5 training			5 training		2
5	Woman and children's rights dissemination					3 training				1
6	Women and men roles/rights dissemination					3 training			3 training	2
7	Women international day organizing			1 time	1 time	1 time	1 time	1 time	1 time	6
8	Children's international day celebration			1 time	1 time	1 time	1 time	1 time	1 time	6
9	Women & children rights support activities		5 training							1
10	Women vocational training	1 training							1 training	2
11	Law against domestic violence dissemination	12 training	5 training	12 training	5 training	3 training	3 training	5 training	1 training	8
12	Alcohol reduction education		5 training			3 training				2
13	Law against trafficking dissemination						3 time	5 time		2
14	Swindle trick of broker prevention education								1 training	1

Source: CDPD – District Priority Matrix

8.2 Temporary Agreements by Commune, for 2009²

At the District Integration Workshop (DIW) the Supporters (donors, agencies, private donors, NGOs, etc.) identify which projects/activities they would like to support or they put forward their own projects to be implemented in a particular commune. Once there is agreement between Commune Councils and Supporters on specific projects a **Temporary Agreement** is signed by the commune and the Supporter to show their mutual commitment to the identified projects/activities.

It is important to keep in mind that such Temporary Agreements do not necessarily result in implementation.

8.2.1 Temporary Agreements for 2009 as per DIW 2008 for Commune: Damrei Choan Khla

Commune GIS	Commune	Temporary Agreements				Supporter	Funding Source	Listed in CIP befor DIW
		Project Name	Quantity	Unit	Est.Cost (K.Riels)			
Social								
60301	Damrei Choan Khla	Sexial worker health education campaign	2	training	1320.2	Department of Health	PIF	✓
60301	Damrei Choan Khla	HIV/AIDS awareness education	4	training	0	Department of Health		✓
60301	Damrei Choan Khla	HIV/AIDS awareness education	360	time	738	Cambodian Women for Peace and Development		✓
NREM								
60301	Damrei Choan Khla	Education on the effect of polluted water	1	place	1722	Department of Environment	PIF	✓
60301	Damrei Choan Khla	Fishery law education	1	place	2050	Forest administration	PIF	✓
Administration and Security								
60301	Damrei Choan Khla	Land law dissemination	2	training	820	Department of Land Management, Urban Planning & Construction	PIF	✓

² Not all the data from the CDPD has been translated to English, this has resulted in some cells in the TA tables being blank.

8.2.2 Temporary Agreements for 2009 as per DIW 2008 for Commune: Kampong Thum

Commune GIS	Commune	Temporary Agreements				Supporter	Funding Source	Listed in CIP befor DIW
		Project Name	Quantity	Unit	Est.Cost (K.Riels)			
Social								
60302	Kampong Thum	Sexual disease and HIV/AIDS prevention to prostitutes	312	time	762.6	Cambodian Women for Peace and Development		<input type="checkbox"/>
60302	Kampong Thum	Women and child health care program	5	time	0	Department of Health		✓

8.2.3 Temporary Agreements for 2009 as per DIW 2008 for Commune: Kampong Roteh

Commune GIS	Commune	Temporary Agreements				Supporter	Funding Source	Listed in CIP befor DIW
		Project Name	Quantity	Unit	Est.Cost (K.Riels)			
Economic								
60303	Kampong Roteh	Skills training to families and vulnerable children	2	person	0	Minority Organisation for Development Economic		<input type="checkbox"/>
60303	Kampong Roteh	Small scale fund provision for families and vulnerable children	2	person	0	Minority Organisation for Development Economic		<input type="checkbox"/>
60303	Kampong Roteh	Vegetable seed supply and vulnerable children assistance	4	family	0	Minority Organisation for Development Economic		<input type="checkbox"/>
Social								
60303	Kampong Roteh	Sexual disease and HIV/AIDS prevention to prostitutes	72	time	442.8	Cambodian Women for Peace and Development		<input type="checkbox"/>
60303	Kampong Roteh	Food/materials support to orphan	12	time	0	Minority Organisation for Development Economic		✓
60303	Kampong Roteh	Food/materials support to orphan	7	family	0	Minority Organisation for Development Economic		✓
60303	Kampong Roteh	HIV/AIDS awareness and child right education to vulnerable children	12	time	0	Minority Organisation for Development Economic		<input type="checkbox"/>
60303	Kampong Roteh	Village chief and commune council training	1	time	0	Minority Organisation for Development Economic		<input type="checkbox"/>
60303	Kampong Roteh	Children and women vaccination	2	village	0	Department of Health		✓

Commune GIS	Commune	Temporary Agreements				Supporter	Funding Source	Listed in CIP before DIW
		Project Name	Quantity	Unit	Est.Cost (K.Riels)			
60303	Kampong Roteh	Travel cost support for family health care and vulnerable children	17	person	0	Minority Organisation for Development Economic		<input type="checkbox"/>
60303	Kampong Roteh	Vulnerable families and children health care	17	person	0	Minority Organisation for Development Economic		<input type="checkbox"/>
60303	Kampong Roteh	Cloth and school materials support	10	person	0	Minority Organisation for Development Economic		<input type="checkbox"/>
60303	Kampong Roteh	House repairing for vulnerable children and families	2	family	0	Minority Organisation for Development Economic		<input type="checkbox"/>
Administration and Security								
60303	Kampong Roteh	Cadastral law dissemination	12	Month	0	Buddhist For Development		<input type="checkbox"/>
60303	Kampong Roteh	Marriage and family law dissemination	12	Month	0	Buddhist For Development		<input type="checkbox"/>
60303	Kampong Roteh	Human rights dissemination	12	Month	0	Buddhist For Development		<input type="checkbox"/>
Gender								
60303	Kampong Roteh	Anti-trafficking of human law dissemination	12	Month	0	Buddhist For Development		<input type="checkbox"/>
60303	Kampong Roteh	Law against domestic violence dissemination	12	Month	0	Buddhist For Development		<input type="checkbox"/>

8.2.4 Temporary Agreements for 2009 as per DIW 2008 for Commune: Ou Kanthor

Commune GIS	Commune	Temporary Agreements				Supporter	Funding Source	Listed in CIP befor DIW
		Project Name	Quantity	Unit	Est.Cost (K.Riels)			
Social								
60304	Ou Kanthor	Community water reservoir	30	Reservoir	0	Department of Rural Development		✓
NREM								
60304	Ou Kanthor	Education on the effect of polluted water	1	place	2050	Forest administration	PIF	✓

8.2.5 Temporary Agreements for 2009 as per DIW 2008 for Commune: Achar Leak

Commune GIS	Commune	Temporary Agreements				Supporter	Funding Source	Listed in CIP before DIW
		Project Name	Quantity	Unit	Est.Cost (K.Riels)			
Social								
60309	Achar Leak	Antenatal care	3	training	0	Department of Health		✓
60309	Achar Leak	Sexual disease and HIV/AIDS prevention to prostitutes	268	time	779	Cambodian Women for Peace and Development		☐
Administration and Security								
60309	Achar Leak	Marriage and family law dissemination	12	Month	0	Buddhist For Development		☐
60309	Achar Leak	Cadastral law dissemination	12	Month	0	Buddhist For Development		☐
60309	Achar Leak	Human rights dissemination	12	Month	0	Buddhist For Development		☐
Gender								
60309	Achar Leak	Anti-trafficking law dissemination	12	Month	0	Buddhist For Development		☐
60309	Achar Leak	Law against domestic violence dissemination	12	Month	0	Buddhist For Development		✓

8.2.6 Temporary Agreements for 2009 as per DIW 2008 for Commune: Kampong Krabau

Commune GIS	Commune	Temporary Agreements				Supporter	Funding Source	Listed in CIP before DIW
		Project Name	Quantity	Unit	Est.Cost (K.Riels)			
Social								
60306	Kampong Krabau	Sexual disease and HIV/AIDS prevention to prostitutes	24	time	73.8	Cambodian Women for Peace and Development		<input type="checkbox"/>
NREM								
60306	Kampong Krabau	Environmental awareness and law education	1	place	7380	Department of Environment	PIF	<input checked="" type="checkbox"/>

8.2.7 Temporary Agreements for 2009 as per DIW 2008 for Commune: Srayov

Commune GIS	Commune	Temporary Agreements				Supporter	Funding Source	Listed in CIP before DIW
		Project Name	Quantity	Unit	Est.Cost (K.Riels)			
Economic								
60310	Srayov	Small revolving fund support to target families	4	family	0	Minority Organisation for Development Economic		<input type="checkbox"/>
60310	Srayov	Livestock mixed farming program and marketing	30	training	0	Cambodian Women Support Organization		<input type="checkbox"/>
60310	Srayov	Skills training to target group	4	training	0	Minority Organisation for Development Economic		<input type="checkbox"/>
60310	Srayov	Vegetable seeds supply for target families	8	family	0	Minority Organisation for Development Economic		<input type="checkbox"/>
Social								
60310	Srayov	Kindergarten classes operation	1	class	57.4	Department of Women	PIF	<input type="checkbox"/>
60310	Srayov	Sexual disease and HIV/AIDS prevention to prostitutes	96	time	246	Cambodian Women for Peace and Development		<input type="checkbox"/>
60310	Srayov	Motivating pupil's parents for school enrollment	12	Month	8044.2	Buddhist For Development		✓
60310	Srayov	HIV/AIDS education and child right to village chiefs and commune chiefs	1	time	0	Minority Organisation for Development Economic		<input type="checkbox"/>
60310	Srayov	Monthly materials support for target families	12	time	0	Minority Organisation for Development Economic		<input type="checkbox"/>
60310	Srayov	Rice, oil and iodized salt support to target families	12	time	0	Minority Organisation for Development Economic		<input type="checkbox"/>
60310	Srayov	House repairing for target families	4	family	0	Minority Organisation for Development Economic		<input type="checkbox"/>
60310	Srayov	Travel cost support for target group to get health service	12	time	0	Minority Organisation for Development Economic		<input type="checkbox"/>
60310	Srayov	Primary health care training for target families	12	Month	0	Minority Organisation for Development Economic		<input type="checkbox"/>
60310	Srayov	School materials and cloth support to target group	20	person	0	Minority Organisation for Development Economic		<input type="checkbox"/>
60310	Srayov	HIV/AIDS education and child right to target family	10	time	0	Minority Organisation for Development Economic		<input type="checkbox"/>
NREM								

District Data Book 2009: Development Plans and Projects

Commune GIS	Commune	Temporary Agreements				Supporter	Funding Source	Listed in CIP befor DIW
		Project Name	Quantity	Unit	Est.Cost (K.Riels)			
60310	Srayov	Fishery law education	15000	Tree	2050	Forest administration	PIF	✓
60310	Srayov	Education on the effect of polluted water	1	day	541.2	Department of Environment	PIF	✓
Administration and Security								
60310	Srayov	Land law dissemination	12	Month	0	Buddhist For Development		✓
60310	Srayov	Land law dissemination	2	training	1640	Department of Land Management, Urban Planning & Construction	PIF	✓
60310	Srayov	Wedding law dissemination	12	Month	0	Buddhist For Development		□
Gender								
60310	Srayov	Law against trafficking dissemination	12	Month	0	Buddhist For Development		✓
60310	Srayov	Law against domestic violence dissemination	12	Month	0	Buddhist For Development		✓
60310	Srayov	Children's international day celebration	1	time	0	Minority Organisation for Development Economic		□
60310	Srayov	Human rights dissemination	12	Month	0	Buddhist For Development		□

8.2.8 Temporary Agreements for 2009 as per DIW 2008 for Commune: Prey Ta Hu

Commune GIS	Commune	Temporary Agreements				Supporter	Funding Source	Listed in CIP befor DIW
		Project Name	Quantity	Unit	Est.Cost (K.Riels)			
Social								
60308	Prey Ta Hu	HIV/AIDS awareness education	2	training	1320.2	Department of Health	PIF	✓
60308	Prey Ta Hu	Women and child health care program	3	training	0	Department of Health		✓
60308	Prey Ta Hu	HIV/AIDS awareness education	3	training	0	Department of Health		✓
60308	Prey Ta Hu	Family planning	3	training	0	Department of Health		✓
60308	Prey Ta Hu	HIV/AIDS awareness education	135	time	656	Cambodian Women for Peace and Development		✓

Source: CDPD, District Level Detail TA resulting from DIW

8.3 Outputs, estimated and actual costs of C/S Fund Projects between 2005 and 2008, by Commune

Commune	Project Type	Budget Year	Output		Quantity	Unit	Unit Cost MR	
			Description	Type			Estimate	Actual
Damrei Choan Khla	Rural Transport	2005	Laterite road	Upgrade	1.708	Km	37.75	37.33
Damrei Choan Khla	Rural Transport	2006	Earth road	Routine maintenance	0.35	Km	2.20	2.20
Damrei Choan Khla	Rural Transport	2006	Single pipe culvert	New	3	Place	3.84	41.84
Damrei Choan Khla	Rural Transport	2006	Laterite road	Upgrade	1.466	Km	38.35	41.84
Damrei Choan Khla	Rural Transport	2007	Laterite road	Repair	0.708	Km	31.82	33.30
Damrei Choan Khla	Rural Transport	2008	Single pipe culvert	New	1	Place	1.87	37.88
Damrei Choan Khla	Rural Transport	2008	Laterite road	Upgrade	0.814	Km	32.26	37.88
Kampong Thum	Urban Drainage and Flood Protection	2005	Drain pipe for flood water	New	2	Line	30.99	30.56
Kampong Thum	Rural Transport	2006	Laterite road	Routine maintenance	0.18	Km	2.00	2.00
Kampong Thum	Rural Transport	2006	Laterite road	Routine maintenance	0.18	Km	2.20	2.20
Kampong Thum	Urban Drainage and Flood Protection	2006	Foul water sewer	New	2	Line	34.62	30.68
Kampong Thum	Domestic Sanitation	2007	Foul water sewer	New	1	Line	25.44	26.84
Kampong Thum	Urban Drainage and Flood Protection	2008	Drainage	New	1	Line	28.75	28.92
Kampong Rotih	Rural Transport	2005	Single pipe culvert	New	2	Place	2.30	33.51
Kampong Rotih	Rural Transport	2005	Laterite road	Upgrade	0.566	Km	20.40	33.51
Kampong Rotih	Rural Transport	2005	Laterite road	Repair	0.5	Km	11.55	33.51
Kampong Rotih	Rural Transport	2006	Single pipe culvert	New	1	Place	1.67	37.15
Kampong Rotih	Rural Transport	2006	Laterite road	Upgrade	1.232	Km	31.24	37.15
Kampong Rotih	Rural Transport	2006	Earth road	Routine maintenance	0.75	Km	2.20	2.20
Kampong Rotih	Rural Transport	2007	Single pipe culvert	New	1	Place	1.63	27.64
Kampong Rotih	Rural Transport	2007	Laterite road	Repair	0.53	Km	25.25	27.64
Kampong Rotih	Rural Transport	2008	Laterite road	Upgrade	0.55	Km	28.02	30.31
Kampong Rotih	Rural Transport	2008	Single pipe culvert	New	1	Place	2.68	30.31
Ou Kanthor	Rural Transport	2005	Laterite road	Upgrade	2	Km	33.50	32.77
Ou Kanthor	Rural Transport	2006	Earth road	Routine maintenance	0.75	Km	2.20	2.20
Ou Kanthor	Rural Transport	2006	Laterite road	Upgrade	1.75	Km	33.17	33.70
Ou Kanthor	Rural Transport	2007	Single pipe culvert	New	1	Place	1.67	27.50
Ou Kanthor	Rural Transport	2007	Laterite road	Upgrade	0.7	Km	24.59	27.50
Ou Kanthor	Rural Transport	2008	Single pipe culvert	New	1	Place	2.72	29.22
Ou Kanthor	Rural Transport	2008	Laterite road	Upgrade	0.44	Km	26.75	29.22
Achar Leak	Rural Transport	2005	Laterite road	Upgrade	2.217	Km	36.57	35.76
Achar Leak	Rural Transport	2006	Laterite road	Upgrade	2	Km	38.95	37.78
Achar Leak	Rural Transport	2006	Laterite road	Routine maintenance	0.55	Km	2.20	2.20

District Data Book 2009: Development Plans and Projects

Commune	Project Type	Budget Year	Output		Quantity	Unit	Unit Cost MR	
			Description	Type			Estimate	Actual
Achar Leak	Rural Transport	2007	Laterite road	Upgrade	0.8	Km	25.78	28.14
Achar Leak	Rural Transport	2007	Single pipe culvert	New	1	Place	1.64	28.14
Achar Leak	Rural Transport	2008	Laterite road	Upgrade	0.756	Km	30.06	33.58
Kampong Krabau	Rural Transport	2005	Laterite road	Upgrade	1.201	Km	34.80	34.51
Kampong Krabau	Rural Transport	2006	Laterite road	Upgrade	1.75	Km	36.88	36.37
Kampong Krabau	Rural Transport	2006	Laterite road	Routine maintenance	0.375	Km	2.10	2.00
Kampong Krabau	Rural Transport	2006	Laterite road	Routine maintenance	0.375	Km	2.10	2.20
Kampong Krabau	Rural Transport	2007	Laterite road	Repair	0.95	Km	26.04	30.16
Kampong Krabau	Rural Transport	2008	Laterite road	Upgrade	0.858	Km	31.77	31.25
Srayov	Rural Transport	2005	Laterite road	New	1.97	Km	48.78	58.71
Srayov	Rural Transport	2005	Single pipe culvert	New	2	Place	2.46	58.71
Srayov	Rural Transport	2006	Laterite road	Upgrade	2.66	Km	65.10	68.89
Srayov	Rural Transport	2006	Laterite road	Routine maintenance	1.35	Km	2.20	2.20
Srayov	Rural Transport	2006	Single pipe culvert	New	1	Place	1.42	68.89
Srayov	Rural Transport	2007	Laterite road	Upgrade	1.8	Km	55.29	57.75
Srayov	Rural Transport	2008	Laterite road	Upgrade	1.385	Km	54.35	55.76
Prey Ta Hu	Rural Transport	2005	Single pipe culvert	New	2	Place	3.50	35.34
Prey Ta Hu	Rural Transport	2005	Laterite road	Upgrade	1.95	Km	32.16	35.34
Prey Ta Hu	Rural Transport	2006	Single pipe culvert	New	1	Place	1.23	36.22
Prey Ta Hu	Rural Transport	2006	Laterite road	Routine maintenance	1.8	Km	2.20	2.20
Prey Ta Hu	Rural Transport	2006	Double pipe culvert	New	1	Place	3.25	36.22
Prey Ta Hu	Rural Transport	2006	Laterite road	Upgrade	1.3	Km	32.33	36.22
Prey Ta Hu	Domestic Sanitation	2007	Foul water sewer	New	1	Line	26.48	26.07
Prey Ta Hu	Rural Transport	2008	Double pipe culvert	New	1	Place	3.73	31.05
Prey Ta Hu	Rural Transport	2008	Earth road	Repair	0.59	Km	18.91	31.05
Prey Ta Hu	Rural Transport	2008	Single pipe culvert	New	1	Place	5.82	31.05

Source: PID

8.4 Total Expenditure on C/S Fund Projects by sector and commune between 2005 and 2008

Sector	Total Cost in Million Riels							
	Damrei Choan Khla	Kampong Thum	Kampong Roteh	Ou Kanthor	Achar Leak	Kampong Krabau	Srayov	Prey Ta Hu
Domestic Sanitation		26.84						26.07
Rural Transport	152.56	4.20	130.80	125.39	137.46	136.49	243.31	104.82
Urban Drainage and Flood Protection		90.16						

Source: PID

8.5 Actual 2009 C/S Fund projects by Commune

Commune	Project Type	Project Output		Quantity	Unit	Fund Source (Riels)		
		Description	Type			Total	C/S	Local Contribution
Sangkat Damrei Choan Khla	Rural Transport	Laterite road	Repair	0.73	km	39,179,800	38,179,800	1,000,000
Sangkat Kampong Roteh	Rural Transport	Laterite road	Repair	0.6	km	39,215,000	38,850,500	364,500
Sangkat Ou Kanthor	Rural Transport	Laterite road	Repair	0.575	km	34,442,700	33,942,700	500,000
Sangkat Ou Kanthor	Rural Transport	Single pipe culvert 0.6m diameter	New	1	Place	34,442,700	33,942,700	500,000
Sangkat Kampong Krabau	Rural Transport	Laterite road	Repair	0.45	km	36,479,700	35,334,200	1,145,500
Sangkat Kampong Krabau	Rural Transport	Single pipe culvert 0.8m diameter	New	1	Place	36,479,700	35,334,200	1,145,500
Sangkat Kampong Krabau	Rural Transport	Single pipe culvert 0.8m diameter with stop logs	New	1	Place	36,479,700	35,334,200	1,145,500
Sangkat Prey Ta Hu	Rural Transport	Laterite road	Repair	0.138	km	42,211,747	41,796,147	415,600
Sangkat Prey Ta Hu	Rural Transport	Laterite road	Repair	0.186	km	42,211,747	41,796,147	415,600
Sangkat Prey Ta Hu	Rural Transport	Laterite road	Repair	0.9	km	42,211,747	41,796,147	415,600
Sangkat Prey Ta Hu	Rural Transport	Double pipe culvert 0.8m diameter	New	1	Place	42,211,747	41,796,147	415,600
Sangkat Achar Leak	Rural Transport	Laterite road	Repair	0.83	km	42,710,299	41,872,999	837,300
Sangkat Achar Leak	Rural Transport	Single pipe culvert 0.6m diameter	New	1	Place	42,710,299	41,872,999	837,300
Sangkat Srayov	Rural Transport	Laterite road	Repair	1.6	km	69,080,400	67,731,900	1,348,500

Source: PID

9 District level Projects from 2006 to 2009

District Initiative Projects (DIPs) are funded by Danida, DFID and PSDD (UNDP, DFID and SIDA).

Funding for 2006-2008

Between 2006 and 2008 there were 14 provinces funded by PSDD and 10 by Danida and DFID. The list of provinces and who funded these is below

Danida and DFID funded DIPs:

Kampong Cham	Kampong Speu	Koh Kong	Kratie	Monduliri
Pursat	Ratanakiri	Siem Reap	Sihanoukville	Kep

PSDD funded DIPs:

Banteay Meanchey	Battambang	Kampong Chhnang	Kandal	Phnom Penh
Prey Veng	Svay Rieng	Takeo	Kampong Thom	Preah Vihear
Stung Treng	Kampot	Oddar Meanchey	Pailin	

Funding for 2009

In 2009 there was a change to the number of provinces funded by the two streams. Danida and DFID were still funding the same 10 provinces they had been funding the previous three years, but two more provinces were added *Kampong Thom and Kampot*. Now PSDD funds 12 provinces and Danida and DFID fund 12.

9.1 District Initiative Infrastructure Projects from 2006 to 2009

9.1.1 District Initiative Infrastructure Projects for 2006 to 2008

No District Initiative Infrastructure Projects were implemented in this district for 2006-2008

9.1.2 District Initiative Infrastructure Projects in 2009

No District Initiative Infrastructure Projects have been implemented in this district for 2009

9.2 District Initiative Service Projects from 2006 to 2009

9.2.1 District Initiative Service Projects for 2006 to 2008

No District Initiative Service Projects were implemented in this district for 2006-2008

9.2.2 District Initiative Service Projects in 2009

No District Initiative Service Projects have been implemented in this district for 2009

9.3 Inter Commune Council Projects in 2008 and 2009

9.3.1 ICC Projects in 2008

No ICC projects in this district at this time

9.3.2 ICC Projects in 2009

No ICC projects in this district at this time

Source: ICC project, Ministry of Interior (DoLA), -UNDP project for Local Governance – DDLG

9.4 Other Projects in 2008 and 2009

9.4.1 RPRP

There are no RPRP projects being implemented in this district or province at this time. The RPRP is only being implemented in Svay Rieng and Prey Veng

9.4.1.1 RPRP Projects from 2006 to 2008

No RPRP projects in this district at this time

9.4.1.2 RPRP Projects in 2009

No RPRP projects in this district at this time

9.4.2 Seth Korma

9.4.2.1 Seth Koma 2007

District	# Comm.	# Vil	CCWC Operational cost	International Events	CPS		Social Services	Total cost
					# teacher	Budget		
Baray	18	181	\$7,956	\$1,800	69	\$4,658	0	\$14,414
Kampong Svay	9	82	\$3,732	\$900	79	\$5,333	0	\$9,965
Stueng Saen	11	55	\$3,694	\$1,100	15	\$1,013	0	\$5,807
Prasat Sambour	5	66	\$1,985	\$500	0	\$0	0	\$2,485
Santuk	9	72	\$3,329	\$900	13	\$878	0	\$5,107
Total	52	456	\$20,696	\$5,200	176	\$11,881	0	\$37,778

Source: UNICEF

9.4.2.2 Seth Koma 2008

District	Commune	Monthly Incentive for CPS Teacher	CCWC monthly meetings at commune level	CCWC quarterly meeting	Monitoring the activities of CPS classes, violence, enrolment and immunity	Monitoring the activities relating to Water, Sanitation and Hygiene	Mission to province	CCWC Ope. costs	Organizing international day involved women and children	Building CPS shelter (4 classes)	Total
Kampong Svay	Kampong Svay	\$540	\$24	\$36	\$180	\$0	\$10	\$90	\$30	\$2,000	\$2,910
	Nipech	\$541	\$48	\$40	\$288	\$0	\$20	\$144	\$60	\$0	\$1,141
	San Kor	\$405	\$24	\$40	\$180	\$135	\$10	\$90	\$30	\$0	\$914
	Tbaeng	\$1,080	\$24	\$42	\$180	\$0	\$10	\$90	\$30	\$2,000	\$3,456
	Trapeang Ruessei	\$1,215	\$24	\$46	\$180	\$135	\$10	\$90	\$30	\$2,000	\$3,730
Total	5	\$3,781	\$144	\$204	\$1,008	\$270	\$60	\$504	\$180	\$6,000	\$12,151

Source: UNICEF

9.4.2.3 Seth Koma 2009

District	# Comm	Ope. cost	CPS		PE	CLTS		Com. youth	Health intervention	Social service mapping	Descriptionary budget	Total
			CPS allowance	M&E	M&E	Monthly meetings	M&E	Monthly meetings				
Baray	18	\$3,894	\$4,320	\$756	\$486	\$3,150	\$1,512	\$759	\$1,400	\$437	\$1,000	\$17,714
Santuk	9	\$1,978	\$878	\$216	\$0	\$1,330	\$576	\$385	\$400	\$0	\$0	\$5,763
Kampong Svay	9	\$2,304	\$4,523	\$792	\$180	\$0	\$0	\$803	\$400	\$0	\$0	\$9,002
Prasat Sambour	5	\$1,210	\$473	\$72	\$0	\$0	\$0	\$198	\$600	\$0	\$0	\$2,553
Stueng Saen	11	\$2,222	\$1,148	\$216	\$54	\$390	\$360	\$396	\$1,200	\$182	\$1,000	\$7,168
Stoung	13	\$3,248	\$0	\$0	\$0	\$0	\$0	\$0	\$1,000	\$0	\$0	\$4,248
Prasat Ballangk	7	\$1,658	\$540	\$72	\$0	\$0	\$0	\$0	\$400	\$0	\$0	\$2,670
Sandan	9	\$2,142	\$0	\$0	\$0	\$0	\$0	\$0	\$400	\$0	\$0	\$2,542
Total	81	\$18,656	\$11,882	\$2,124	\$720	\$4,870	\$2,448	\$2,541	\$5,800	\$619	\$2,000	\$51,660
Contingency												1,940.00
Sub-total WATSAN						4,870.00	2,448.00					7,318.00
Project 1 budget		18,656.00	11,882.00	2,124.00	720.00			2,541.00	5,800.00	619.00	2,000.00	44,342.00
Grand Total												53,600.00

Source: UNICEF

]

SECTION D: SERVICES AND ORGANIZATIONS

10 Infrastructure

10.1 Length of and Expenditure on Roads in 2008, by District

Roads	KPT	Baray	Kampong Svay	Stoeung Saen	Prasat Balangk	Prasat Sambour	Sandan	Santuk	Stoung
Length of paved road in the district (m)	1,279	325,017	109,384	106,003	83,794	96,464	275,702	186,979	95,904
Length of unpaved roads in the district (m)	818	79,604	202,973	64,240	90,303	153,095	65,976	59,387	102,085
Amount spent on construction of roads in 2008 (\$)	n/a	n/a	n/a	0	n/a	n/a	n/a	n/a	n/a
Amount spent on repair and rehabilitation of roads in 2008 (\$)	37,038	n/a	n/a	37,038	n/a	n/a	n/a	n/a	n/a

Note 1: Please note that these data are not necessarily complete or correct. The data are derived from government agencies at provincial and district level which used different recording systems, did not always have complete data or were, sometimes, less than willing to share their data.

Note 2: Please be aware that these data are incomplete due to the fact that the amounts for the construction, repair and rehabilitation recorded reflect only funds provided by the government, not the contributions by any other parties.

10.2 Scale of and Expenditure on Irrigation in 2008, by District

Irrigation	KPT	Baray	Kampong Svay	Stoeung Saen	Prasat Balangk	Prasat Sambour	Sandan	Santuk	Stoung
Number of irrigation schemes operating in 2008	3	1	0	0	0	0	0	1	1
Total nr of hectares under irrigation in dry season 2008	18,200	1,228	3,296	702	265	876	425	424	10,985
Total funds spent in 2008 on construction of irrigation systems (\$)	3,024,750	3,000,000	n/a	24,750	n/a	n/a	n/a	n/a	n/a
Total funds spent in 2008 on rehabilitation/repair of irrigation systems (\$)	24,950	n/a	n/a	n/a	n/a	n/a	n/a	n/a	24,950
Total funds spent in 2008 on operation and maintenance (\$)	n/a	n/a	n/a	n/a	n/a	n/a	n/a	n/a	n/a

Note 1: Please note that these data are not necessarily complete or correct. The data are derived from government agencies at provincial and district level which used different recording systems, did not always have complete data or were, sometimes, less than willing to share their data.

Note 2: Please be aware that the data above are incomplete as these only reflect funds provided by the government, not the contributions by farmers or other parties.

10.3 Power Supply in 2008, by District

Electricity	KPT	Baray	Kampong Svay	Stoeung Saen	Prasat Balangk	Prasat Sambour	Sandan	Santuk	Stoung
Total number of electricity connections to households	11,659	3,715	192	4,541	171	148	509	1,217	1,166
Total number of electricity connections to agencies, companies, organizations	n/a	n/a	n/a	n/a	n/a	n/a	n/a	n/a	n/a
Total volume in KWh of electricity consumed last in 2008	3,189,000	1,304,000	20,000	1,600,000	20,000	20,000	60,000	40,000	125,000
Total amount collected from users for consumed electricity (\$)	n/a	n/a	n/a	n/a	n/a	n/a	n/a	n/a	n/a
Per capita electricity consumption in 2008 in Kwh	24	n/a	n/a	n/a	n/a	n/a	n/a	n/a	n/a

Note 1: Please note that these data are not necessarily complete or correct. The data are derived from government agencies at provincial and district level which used different recording systems, did not always have complete data or were, sometimes, less than willing to share their data.

Note 2: These data only record electricity provided by electricity companies and does not include homes powered by generators or batteries (for this information see Section B: General Profile, Part 1: General Information; table 1.3.1 and chart 1.3.4).

Note 3: In most provinces electricity is only provided through town-based networks

Note 4: Per capita consumption is calculated by dividing the total volume of electricity produced in 2008 by the number of people living in each district as per the 2008 census (for the provincial data it is calculated against the number of people living in the province)

11 Health Facilities

Please note that the Operational District (health) boundaries are different to the administrative district boundaries. Therefore the data provided here shows the facilities, staff, NGOs etc in each Operational District within the province NOT the administrative district.

Acronyms

Com Cov	Commune Covered	MW2	Secondary Midwives
CPA	Complementary Package of Activities	NU1	Primary Nurse
Dr	Doctor	NU2	Secondary Nurse
FDH	Former District Hospital	OD	Operational District
HC	Health Center	Others	Other Staff
HC (NB)	Health Center no building	PHD	Provincial Health Department
HP	Health Post	Pop 04-05	Population Covered 2004 or 2005
MA	Medical Assistant	RH	Referral Hospital
MPA	Minimum Package of Activities	Vil Cov	Village Covered
MW1	Primary Midwives	VIL-HC	Distance from Village to Health Center

11.1 Health Facilities in the Province, by Operational District

Kompong Thom	OD	RH	HC	HP
Baray and Santuk	1	1	19	
Kampong Thom	1	1	21	
Stong	1		10	
Total	3	2	50	0

11.2 Health Facilities and Staff in the province, by Operational District

This table shows health facilities, staff and coverage of health facilities in each operational district.

No	Facility Name	Type	Class	Dr	Ma	Nu2	Nu1	Mw2	Mw1	Others	Com Cov	Vil Cov	Pop. 04-05
Baray and Santuk													
1	Ballangk	HC	MPA	0	0	1	0	1	2	2	1	12	17,075
2	Baray	HC	MPA	0	0	1	2	0	3	1	1	12	13,595
3	Boeng	HC	MPA	0	0	0	2	0	1	4	1	5	8,945
4	Chaeung Daeung	HC	MPA	0	0	0	3	1	2	1	1	10	10,972
5	Chhouk Khsach	HC	MPA	0	0	1	0	0	1	3	1	14	14,294
6	Chong Doung	HC	MPA	0	0	2	0	1	1	1	1	8	11,936

District Data Book 2009: Services and Organizations

No	Facility Name	Type	Class	Dr	Ma	Nu2	Nu1	Mw2	Mw1	Others	Com Cov	Vil Cov	Pop. 04-05
7	Kampong Thma	HC	MPA	0	0	1	0	1	1	3	1	10	7,819
8	Krava	HC	MPA	0	0	1	2	0	5	1	5	24	22,810
9	Kreul	HC	MPA	1	0	0	4	0	1	0	2	16	12,664
10	L'ak	HC	MPA	0	0	0	2	0	2	1	3	13	9,886
11	Prasat	HC	MPA	0	0	2	1	0	1	1	1	10	9,367
12	Prataong	HC	MPA	0	0	0	1	0	3	1	3	15	11,438
13	Srah Banteay	HC	MPA	1	0	2	0	2	0	1	1	8	9,384
14	Sralau	HC	MPA	1	0	0	2	0	0	0	2	18	13,711
15	Tang Kouk	HC	MPA	1	0	2	1	1	2	1	2	15	15,242
16	Tang Krasaing	FDH	CPA+MPA	1	0	3	4	4	4	10	2	14	17,775
17	Ti Pou	HC	MPA	0	0	2	2	0	1	0	1	11	7,700
18	Tnaot Chum	HC	MPA	0	0	1	5	0	1	1	2	12	10,573
Total:				5	0	19	31	11	31	32	31	227	225,186
Kampong Thom													
1	Treal	HC	MPA	0	0	1	2	1	1	1	1	18	13,929
2	Achar Leak	HC	MPA	0	1	3	0	1	1	0	3	6	15,463
3	Chey	HC	MPA	0	0	1	2	0	1	4	3	15	10,225
4	Chheu Teal	HC	MPA	0	0	1	3	0	2	2	2	22	14,689
5	Chhouk	HC	MPA	0	0	1	2	0	3	2	2	24	13,038
6	Damrei Choan Khla	HC	MPA	0	0	2	3	1	1	0	2	6	12,916
7	Damrei Slab	HC	MPA	0	0	0	2	0	2	2	3	13	10,380
8	Kakaoh	HC	MPA	0	0	0	4	0	1	2	1	10	10,574
9	Kampong Kou	HC	MPA	0	0	0	5	1	0	1	2	8	9,392
10	Kampong Svay	HC	MPA	0	0	1	2	0	1	2	1	10	12,227
11	Kampong Thom	HC	MPA	0	2	2	3	2	3	0	1	4	2,476
12	Kouk Nguon	HC	MPA	0	0	3	0	1	2	2	3	11	11,205
13	Mean Chey	HC	MPA	0	0	1	6	0	3	2	4	37	17,761
14	Prey Kuy	HC	MPA	0	0	1	3	0	1	1	3	11	9,332
15	Prey Pras	FDH	CPA+MPA	0	0	1	6	0	3	3	2	19	16,869
16	Sala Visai	FDH	CPA+MPA	1	0	1	3	1	1	0	2	21	14,563
17	Sambour	FDH	CPA+MPA	0	0	0	0	0	0	0	1	15	12,579
18	San Kor	HC	MPA	0	0	1	4	1	0	0	1	14	15,434
19	Sandan	FDH	CPA+MPA	0	0	1	11	2	4	8	4	32	16,329
20	Srayov	HC	MPA	0	0	1	4	0	2	1	1	10	12,895

No	Facility Name	Type	Class	Dr	Ma	Nu2	Nu1	Mw2	Mw1	Others	Com Cov	Vil Cov	Pop. 04-05
21	Tang Krasau	HC	MPA	0	0	1	6	0	1	1	2	16	11,432
Total:				1	3	23	71	11	33	34	44	322	263,708
Stong													
1	Tboung Krapeu	HC	MPA	0	0	1	2	0	1	1	2	8	11,796
2	Banteay Stoung	HC	MPA	0	0	1	2	0	2	0	1	2	1,058
3	Chamnar Kraom	HC	MPA	0	0	1	0	1	1	0	1	10	9,561
4	Chamnar Leu	HC(NB)	None	0	0	0	0	1	0	0	2	12	11,384
5	Daung	HC	MPA	0	0	2	0	0	1	0	3	21	15,127
6	Msar Krang	HC	MPA	0	0	3	0	1	0	0	2	16	10,657
7	Pralay	HC	MPA	0	0	3	0	0	3	1	2	22	18,656
8	Samdach Ov Kraya Sakream	HC	MPA	0	0	1	0	0	0	1	2	17	13,191
9	Samprouch	HC	MPA	0	0	2	1	0	2	0	1	17	10,372
10	Stoung	HC	MPA	0	0	1	2	1	1	1	2	13	16,696
Total:				0	0	15	7	4	11	4	18	138	118,498
Total All				6	3	57	109	26	75	70	93	687	607,392

Source: MEDiCAM – Infrastructure - (http://www.medicam-cambodia.org/hsi/health_system/srch/index.asp?cboLcn=6&cmdSearch=Search&cboCHName=&cboType=)

11.3 Deliveries in 2007 in the Province, by Operational District

OD	Deliveries	Deliveries at home		Deliveries	Total deliveries	Total deliveries
	at HC	By Health Staff	ByTBAs	at RH	by Health Staff	by health staff and TBAs
Baray and Santuk	213	822	2386	141	1176	3562
Kampong Thom	231	682	2907	536	1449	4356
Stong	38	751	1764	83	872	2636
<i>Sub-total</i>	<i>482</i>	<i>2255</i>	<i>7057</i>	<i>760</i>	<i>3497</i>	<i>10554</i>

Source: MoH, Annual Statistics 2007

12 Education³

12.1 Schools, Classes, Students, Staff, for all levels, for 2007/2008 by District

District	Number of Schools	Disadv. Schools	Number of Classes	Classes in Pagoda	Enrollment		Repeaters		Teaching Staff		Non-Teaching Staff		Total Staff	
					Total	Girl	Total	Girl	Total	Female	Total	Female	Total	Female
Baray	119	2	1,064	10	44,276	21,539	3,268	1,422	984	440	170	24	1,154	464
Kampong Svay	85	1	551	0	20,429	9,934	1,520	651	417	141	85	17	502	158
Prasat Balaing	44	0	256	0	10,121	5,100	1,115	524	158	38	19	4	177	42
Prasat Sambo	56	0	322	0	11,219	5,326	858	398	314	96	63	12	377	108
Sandann	58	8	300	11	11,197	5,338	1,531	668	215	60	34	3	249	63
Santouk	73	1	489	0	18,383	9,104	1,325	561	465	218	81	22	546	240
Staung	98	3	581	2	23,930	11,892	1,616	751	406	160	51	14	457	174
Stung Sen	66	0	554	0	20,613	9,802	1,177	487	730	385	155	48	885	433
Whole Province	599	15	4,117	23	160,168	78,035	12,410	5,462	3,689	1,538	658	144	4,347	1,682
- Urban Area	66	0	554	0	20,613	9,802	1,177	487	730	385	155	48	885	433
- Rural Area	533	15	3,563	23	139,555	68,233	11,233	4,975	2,959	1,153	503	96	3,462	1,249

12.2 Characteristics of Schools and School Principals for 2007/2008 by Commune

Commune	Number of Schools				2 - Shift	Floating	Schools	Attached	Schools Without			Characteristics of School Principals (Incharge)			
	Pre-Sch	Primary	College	Lycee	Schools	Schools	in Pagoda	Pre-Sch	Water Sup.	Latrine		Avg. Age	Avg. Service	U.Sec+ Ed.	Female
Damrei Choan Khla	2	2	1	1	3	0	0	2	4	3		48.5	24.2	1	1
Kampong Thum	2	2	1	0	3	0	0	2	1	3		47.7	20.8	3	2
Kampong Rotih	0	2	0	0	2	0	0	0	2	1		43.0	21.5	0	0
Ou Kanthor	1	3	1	0	4	0	0	1	2	1		51.5	24.0	1	0
Achar Leak	2	2	0	1	2	0	0	2	1	1		53.8	25.6	1	1
Kampong Krabau	2	3	0	0	3	0	0	2	1	1		54.0	26.6	1	0
Srayov	4	11	1	0	12	0	0	3	6	7		46.7	21.8	2	2
Prey Ta Hu	1	3	0	0	3	0	0	1	1	2		47.0	24.0	1	0

³ All the data for section 12 comes from the Ministry of Education, Youth and Sport (MoEYS)

12.3 Enrolment by Level of Education, 2006/2007 by Commune

Commune	School	Pre school		Primary School		Lower Secondary School		Upper Secondary School		Enrolment	
		Total	Female	Total	Female	Total	Female	Total	Female	Total	Female
Damrei Choan Khla	6	94	54	685	310	1036	471	1513	656	3328	1491
Kampong Thum	5	396	200	1503	714	689	358	0	0	2588	1272
Kampong Roteh	2	0	0	248	127	0	0	0	0	248	127
Ou Kanthor	5	34	16	930	437	328	176	0	0	1292	629
Achar Leak	5	196	95	998	484	1407	644	1475	616	4076	1839
Kampong Krabau	5	53	18	304	129	0	0	0	0	357	147
Srayov	16	195	86	3514	1696	744	349	0	0	4453	2131
Prey Ta Hu	4	45	24	808	375	0	0	0	0	853	399

12.4 Enrolment by Level of Education, 2007/2008 by Commune

Commune	School	Pre school		Primary School		Lower Secondary School		Upper Secondary School		Enrolment	
		Total	Female	Total	Female	Total	Female	Total	Female	Total	Female
Damrei Choan Khla	6	103	46	655	290	912	431	1515	671	3185	1438
Kampong Thum	5	403	192	1445	693	646	325	0		2494	1210
Kampong Roteh	2	0	0	230	123	0	0	0		230	123
Ou Kanthor	5	35	18	831	417	340	186	0		1206	621
Achar Leak	5	217	111	911	444	1321	639	1898	854	4347	2048
Kampong Krabau	5	43	17	286	134	0	0	0		329	151
Srayov	16	185	82	3235	1562	748	375	0		4168	2019
Prey Ta Hu	4	55	27	686	318	0	0	0		741	345

12.5 Aspects of Enrolment for 2007/2008 by Commune

Commune	% Repeaters (Total)			% Over-age Enrollment (Total)			% Repeaters (Girl)			% Over-age Enrollment (Girl)		
	Primary	L.Sec.	U.Sec.	Primary	L.Sec.	U.Sec.	Primary	L.Sec.	U.Sec.	Primary	L.Sec.	U.Sec.
Damrei Choan Khla	8.9	1.1	0.4	21.2	32.9	32.6	5.5	0.9	0.4	20.3	28.8	26.7
Kampong Thum	3.7	1.1	0.0	15.3	28.9	0.0	2.6	0.6	0.0	13.0	26.8	0.0
Kampong Roteh	14.3	0.0	0.0	19.1	0.0	0.0	12.2	0.0	0.0	20.3	0.0	0.0

Commune	% Repeaters (Total)			% Over-age Enrollment (Total)			% Repeaters (Girl)			% Over-age Enrollment (Girl)		
	Primary	L.Sec.	U.Sec.	Primary	L.Sec.	U.Sec.	Primary	L.Sec.	U.Sec.	Primary	L.Sec.	U.Sec.
Ou Kanthor	9.7	0.0	0.0	19.9	42.9	0.0	8.2	0.0	0.0	19.4	39.2	0.0
Achar Leak	4.6	0.5	0.5	12.8	41.6	43.8	3.8	0.3	0.2	11.3	35.1	37.6
Kampong Krabau	8.0	0.0	0.0	19.9	0.0	0.0	11.2	0.0	0.0	16.4	0.0	0.0
Srayov	13.8	1.7	0.0	24.1	56.3	0.0	12.5	0.8	0.0	22.3	49.9	0.0
Prey Ta Hu	16.5	0.0	0.0	28.4	0.0	0.0	16.7	0.0	0.0	24.5	0.0	0.0

12.6 School Buildings for all schools in the District for 2007/2008, by Commune

Commune	Total Number of		Concrete/Brick Structure		Wooden Structure		Bamboo Structure		New Buildings		Buildings Without Good		
	Buildings	Rooms	Buildings	Rooms	Buildings	Rooms	Buildings	Rooms	Repaired	Constructed	Floor	Roof	Wall
Damrei Choan Khla	15	64	14	62	1	2	0	0	0	0	0	0	0
Kampong Thum	12	53	10	47	2	6	0	0	0	3	4	2	3
Kampong Roteh	4	11	1	4	3	7	0	0	0	0	2	0	2
Ou Kanthor	6	25	4	18	2	7	0	0	0	0	2	2	2
Achar Leak	28	127	21	101	7	26	0	0	3	2	11	5	9
Kampong Krabau	5	15	3	11	2	4	0	0	0	0	2	1	1
Srayov	25	85	23	82	2	3	0	0	1	1	5	2	2
Prey Ta Hu	6	23	5	21	1	2	0	0	0	0	1	1	0

12.7 Conditions of Classrooms and Existence of Separate School Office and Library, by Commune

Commune	Number of Class rooms	Number of Classrooms			Classrooms Without Good			Number of Furniture needed				Schools with Separate	
		in Pagoda	New Repaired	New Constr.	Floor	Roof	Wall	Desks	Chairs	Black-board	Teacher Table	Office	Library
Damrei Choan Khla	43	0	0	0	0	0	0	0	0	0	0	4	2
Kampong Thum	35	0	0	9	16	10	11	30	0	0	0	3	1
Kampong Roteh	8	0	0	0	6	0	6	0	0	0	3	1	0
Ou Kanthor	20	0	0	0	6	6	6	0	0	0	0	4	1
Achar Leak	77	0	14	11	63	16	55	250	250	0	35	2	2
Kampong Krabau	11	0	0	0	5	2	2	0	0	0	0	1	0
Srayov	70	0	3	4	13	3	3	142	142	2	13	6	2
Prey Ta Hu	14	0	0	0	2	2	0	0	0	0	0	3	1

12.8 Community Participation and Financing across all schools in the District for 2007/2008 by Commune

Commune	Parent Association				Comm. Teachers	Teaching Monks	PAP Fund (Riel)		Number of Schools Obtaining Funds from				
	Exists	Held Meet	Total	Female			per Student	per School	Sch. Income	Community	Gvt. For building	Abroad	IOs/NGOs
Damrei Choan Khla	4	4	6	1	0	0	15,123	9,781,560	0	0	0	0	0
Kampong Thum	4	4	5	1	0	0	9,271	3,483,575	0	0	0	0	0
Kampong Rotih	2	2	4	1	0	0	12,524	1,553,000	0	0	0	0	0
Ou Kanthor	3	3	6	1	0	0	10,110	2,350,550	0	1	0	0	0
Achar Leak	5	5	6	2	0	0	15,782	15,308,675	0	0	0	0	0
Kampong Krabau	3	4	8	2	0	0	9,792	744,175	0	0	0	0	0
Srayov	13	13	5	1	0	0	10,046	3,290,569	1	3	0	0	0
Prey Ta Hu	3	3	7	1	0	0	8,806	2,371,667	0	0	0	0	0

12.9 Percentage Student Flow Rates and Graduation by level 2006/2007, by Commune

Commune	Primary Level (Grades 1-6)			Lower Secondary Level (Grades 7-9)			Upper Secondary Level (Grades 10-12)			Successful Candidates		
	Promotion	Repetition	Dropout	Promotion	Repetition	Dropout	Promotion	Repetition	Dropout	Grade 6	Grade 9	Grade 12
Damrei Choan Khla	87.3	8.5	4.2	83.2	1.0	15.8	80.6	0.4	19.0	100	246	266
Kampong Thum	92.1	3.5	4.3	90.4	1.0	8.6	0.0	0.0	0.0	234	180	0
Kampong Rotih	75.0	13.3	11.7	0.0	0.0	0.0	0.0	0.0	0.0	31	0	0
Ou Kanthor	77.3	8.7	14.0	79.0	0.0	21.0	0.0	0.0	0.0	117	62	0
Achar Leak	91.1	4.2	4.7	88.8	0.5	10.7	101.6	0.6	-2.2	158	367	301
Kampong Krabau	82.9	7.6	9.5	0.0	0.0	0.0	0.0	0.0	0.0	37	0	0
Srayov	80.2	12.7	7.1	71.0	1.7	27.3	0.0	0.0	0.0	467	108	0
Prey Ta Hu	76.1	14.0	9.9	0.0	0.0	0.0	0.0	0.0	0.0	115	0	0

13 Staff and Resources at the District

This chapter presents data from the District Information System, collected around the middle of 2009 unless otherwise specified.

13.1 District Councilors elected in 2009

Name	Sex	Year of Birth	Function	Phone
គឹម សុវរ	M	1948	Chairperson of The Council	012-180 2844
ម៉ៅ គឹមប៊ុរី	M	1947	Councillor	012-504 207
ម៉ុង សុខុម	M	1951	Councillor	012-597 839
អ៊ុំ វណ្ណា	M	1967	Councillor	012-530 119
ឡេង សារិក	M	1947	Councillor	012-927 917
វ៉ាន់ ជុន	M	1947	Councillor	092-279 048
តាប់ តាំងអាំង	M	1947	Councillor	092-620 057
អាន សំអោក	M	1944	Councillor	092-849 814
ស្រី ស្រៀង	M	1952	Councillor	012-562 482
ខួន សារី	M	1954	Councillor	089-898 550
យិន រឿន	M	1945	Councillor	017-737 084
សេង គឹមស្រីន	F	1960	Councillor	012-850 777
សេង វណ្ណា	M	1973	Councillor	011-294 687
ខៀវ សន	M	1949	Councillor	
កែវ សំអាន	M	1952	Councillor	012-614 715

13.2 Committees of the Council

Please note at the time of producing the district data books the composition of the committees was not known for all district councils and therefore data were not available for 13.2.1, 13.2.2, 13.2.3.

13.2.1 Technical Facilitation Committee

13.2.2 Women's and Children's Affairs Committee

13.2.3 Procurement Committee

13.3 Board of Governors

Name	Sex	DoB	Function	Salary Level	Body	Phone
ហុក វិន	M	00	Municipality governor	១១-២	Medium Civil Servant	012-960 133
ខែក ថា	M	00	Municipality deputy governor	១១-៣	Medium Civil Servant	092-813 790
ឌុក ផលវ័ត្ត	F	00	Municipality deputy governor	១៣-៤	Medium Civil Servant	092-948 585
វ៉ា យ៉ិន	M	00	Municipality deputy governor	១១-៦	Medium Civil Servant	012-237 488
អ៊ា តឹមឡាន	M	00	Municipality deputy governor		Policeman	

13.4 Offices under Sala Krong, Sala Srok and Sala Khan

Office Name	Chief		Deputy Chief		No. of Staff				Office Area (m2)	No of vehicle (public or program)	
					State		Contract			vehicle	moto
	M	F	M	F	M	F	M	F			
Adminnistration Office	1	0	1	0	3	3	0	0	0	0	0
Economy Office	1	0	1	0	2	0	0	0	0	0	0
Social Affair Office	1	0	0	0	4	1	0	2	0	0	0

13.5 Municipality/District/Khan line offices

Office Name	Chief		Deputy Chief		No. of Staff				Office Area (m2)	No of vehicle (public or program)	
					State		Contract				
	M	F	M	F	M	F	M	F		vehicle	moto
District/ Khan Police Headquarter	1	0	5	1	108	3	0	0	0	0	0
District/ Khan Military Police Headquarter	1	0	9	0	7	0	0	0	120	0	2
District/ Khan Military Subregion	1	0	2	0	10	1	0	0	256	0	0
Planning Office	1	0	0	0	0	0	0	0	0	0	0
Rural Development Office	1	0	1	0	0	0	0	0	0	0	0
Women Affairs Office	0	1	0	1	0	0	0	0	0	0	0
Environment Office	1	0	1	0	2	0	2	0	0	0	0
Education Office	1	0	2	1	9	4	0	0	135	0	1
District/ Khan Operational Office	1	0	1	0	12	11	2	0	164	1	9
Agriculture Office	1	0	0	0	2	1	0	0	15	0	2
Social Affairs Office	1	0	1	0	0	0	0	0	0	0	0
Culture Office	1	0	1	1	2	0	0	0	0	0	0
Information Office	1	0	0	0	0	0	0	0	0	0	0
Public Work Office	1	0	0	1	1	0	0	0	0	0	0
Lan Management Office	1	0	1	0	0	0	0	0	0	0	0
Tax Unit	1	0	1	0	0	2	0	0	70	0	0

13.6 Properties and Equipment of District Administration

13.6.1 Buildings

Description	Unit	Number	Remark
Office building type			
- Concrete	building	1	
- Wood	building	0	
- Mixed	building	0	
Total floor space	m2		
- Concrete	m2	325	
- Wood	m2	0	
- Mixed	m2	0	
Building condition			
- Concrete	%	90	
- Wood	%	0	
- Mixed	%	0	
Office reserved land area	m2	0	
Total office land area	m2	10,000	

13.6.2 Means of Transport available at the District Administration

Description	Unit	Number	Remark
Vehicle (type, size and condition)	Vehicle	0	
Motorcycle (type, size and condition)	Motor	0	

13.6.3 Equipment in District Offices

Description	Unit	Number	Remark
Generator	per set	0	
Photocopy machine at the office	per set	0	
Private photocopy machine at the district town	place	10	
Telephone network (mobile line service)	network	6	
Telephone network (land line service)	network	0	
Fax (include Fax number)	per set	0	
Computer	per set	2	
Printer	per set	0	
Scanner	Per set	0	
Number of computers those can access Internet and email services in the municipality/ district/khan office (including the technical line offices (please provide the email address)	set	0	
Typewriters (including the technical line offices)	per set	6	
Staff of Municipality/district/khan office can use computer	person	5	

13.6.4 Equipment and facilities at the District Town

Description	Unit	Number	Remark
Availability of electricity at noon	Nr Hours	12	
Private internet and email services in the municipality/ district/khan town.	place	5	

13.7 Registered Revenue of the District Administration in 2008⁴

Sources of Revenue	Revenue Collecting Agency	Estimated annual revenue (In Riels)
Shopping Store	Provincial Taxation Branch	40,340,400
Slaughter House	Provincial Taxation Branch	39,234,050
Turn Over Tax	Provincial Taxation Branch	60,000,000
Tax imposed on merchants	Market Tax Contractor	29,000,000
Transportation Tax	Provincial Taxation Branch	-

13.8 Services in the District

13.8.1 Public Sector Services

Type of Infrastructure/services	Unit	Number	
		Public	Private
Schools			
Pre-school	room	31	0
Primary School	room	193	0
Secondary school	room	82	0
High School	room	49	0
University	room	0	1
Health			
Health post	place		
Health center	place	4	0
Referral Hospital	bed	120	0

13.9 Civil Society Organizations active in the District

13.9.1 NGOs, Associations, Programs and Projects

Name	Abbr.	Sector Activities	No. of Target Communes	No. of Target Villages	Office in District
NA	BSD	អប់រំក្រៅប្រព័ន្ធ	1	4	Yes
NA	MHSS	បុរសស្រឡាញ់បុរស	4	7	Yes
OXFAM	OXFAM	ធនធានធម្មជាតិកសិកម្ម	19	0	Yes
NA	MSIC	សុខភាពផ្លូវភេទ - បន្តពូជ	4	0	Yes
NA	NA	កសិកម្មចម្រុះនិងទីផ្សារ	43	380	Yes
NA	HOM	សុខភាពស្ត្រីគាំពារកុមារ	3	0	Yes
NA	NA	សន្សំប្រាក់	1	4	Yes
NA	AFH	ជួយគ្រួសារក្រីក្រ	81	0	Yes
NA	ADHOC	អង្កេតរំលោភសិទ្ធិមនុស្ស	81	0	Yes
NA	TPO	ពិគ្រោះបញ្ហាបុគ្គលគ្រួសារ	2	17	Yes
NA	NA	អប់រំសុខភាពជីវិតអេដស៍	16	25	Yes

⁴ Please note that the data in this table are at best estimates. If the table appears blank it does not mean there is no revenue, just that the data have not been recorded/entered.

13.9.2 Political Parties active in the Municipality, District and Khan

Name	Abbr.	Office in District
Cambodian People Party	CPP	Yes
FUNCINPEC Party	FUNCINPEC	Yes
Human Rights Party	HRP	Yes
NA	NA	Yes
NRP	NRP	Yes
SAM RAINSY Party	Sam Rainsy Party	Yes

13.10 Private Sector Organizations

13.10.1 Registered Companies in 2008, by District

On private sector at commune and/or district level	KPT	Baray	Kampong Svay	Stoeung Saen	Prasat Balangk	Prasat Sambour	Sandan	Santuk	Stoung
Businesses and Companies									
Number of registered agricultural enterprises (except family farms)	65	20	6	9	3	8	0	10	9
Number of registered shops, restaurants, transporters and other services	9,818	2,495	1,128	693	867	2,256	756	740	883
Number of manufacturing companies	n/a	n/a	n/a	n/a	n/a	n/a	n/a	n/a	n/a
Number of registered forestry enterprises	n/a	n/a	n/a	n/a	n/a	n/a	n/a	n/a	n/a
Number of registered mining companies	-	n/a	n/a	n/a	n/a	n/a	n/a	n/a	n/a
Number of financial institutions	39	14	1	7	3	4	1	2	7
Number of other commercial institutions	84	15	4	54	0	0	2	6	3
Estimated number of informal enterprises (not registered)	n/a	n/a	n/a	n/a	n/a	n/a	n/a	n/a	n/a
Employment									
Number of people employed in 2008 by companies or any other enterprises	2,516	198	204	957	65	32	523	376	161
Investment									
Amount invested in 2008 by private sector (\$)	n/a	n/a	n/a	n/a	n/a	n/a	n/a	n/a	n/a
Markets									
Number of markets, operating at least weekly	50	12	7	6	3	8	3	4	7

Note: These data are not comprehensive as different companies and business are registered with different departments and not all departments were able or willing to provide detailed information. The number of informal enterprises reflects a rough estimate, made at provincial level and could not be verified.

Source: Unofficially collected at Provincial Level

13.10.2 Farmers in 2008, by District

Credit	KPT	Baray	Kampong Svay	Stoeung Saen	Prasat Balangk	Prasat Sambour	Sandan	Santuk	Stoung
Volume of credit provided to farmers in 2008 (This data is only from Agricultural extension office , PDA) (\$)	3,659	0	1,044,300	9,570,000	0	0	2,550,000	1,470,000	0
Number of farmers receiving credit in 2008	418	0	114	206	0	0	51	47	0
Volume of credit provided to companies in 2008 (\$)	n/a	n/a	n/a	n/a	n/a	n/a	n/a	n/a	n/a

Note: Please note that these data are not necessarily complete or correct. The data are derived from government agencies at provincial and district level which used different recording systems, did not always have complete data or were, sometimes, less than willing to share their data.

Source: Unofficially collected at Provincial Level

SECTION E: POVERTY DATA

14 Data on Poverty

14.1 Predicted Poverty Rates for 2009, by commune

The **Predicted Family Poverty Rate** is based on a statistical model (robust multilevel mixed effect regression) at village level developed by the NCDD M&E Unit and uses CDB data for making an estimate of the predicted poverty rate (this is: *the portion of total families in the district or commune who are expected to be poor*) for the following year using current year data.

The basis for this predicted poverty rate also uses IDPoor (a project of the Ministry of Planning with technical assistance provided by GTZ) data

Commune	2004	2009
Damrei Choan Khla	27%	17.40%
Kampong Thum	22.50%	1.80%
Kampong Rotheh	34%	18.30%
Ou Kanthor	44.30%	37.10%
Achar Leak	30.20%	20.60%
Kampong Krabau	33%	22.90%
Srayov	41.90%	32.30%
Prey Ta Hu	31.30%	25.50%

14.2 Poverty data from survey

14.2.1 Identification of Poor Households Program (IDPoor)

The Ministry of Planning IDPoor Program has developed standardized Procedures for Identification of Poor Households in rural areas. These Procedures are implemented using a participatory and consultative process by sub-national government structures and community representatives.

The IDPoor Program is managed by the Ministry of Planning (MOP), in cooperation with the Ministry of Interior's Department of Local Administration (DOLA). The program is supported by the Federal Republic of Germany, with technical assistance provided by German Technical Cooperation (GTZ). In 2009, AusAID also provided funding support to the Program.

Objective

The IDPoor Program aims to implement the Procedures for Identification of Poor Households in rural areas as widely as possible, in order to provide data on the level of poverty of areas and households that can be used by a large range of institutions and organizations for targeting services and development assistance to poor areas and poor households.

Coverage: During 2007, 2008 and 2009 the IDPoor Procedures have been implemented in 18 provinces (with partial or complete coverage), covering a total of around 7000 rural villages. The MOP and a number of NGO partners who are Health Equity Fund Operators have collaborated in collecting this data from different areas.

Categorization: Identified poor households are classified under two poverty categories: Poor Level 1 (very poor), and Poor Level 2 (poor). Households are classified based on data collected using a standard questionnaire, together with consideration by villagers of these households' special circumstances.

Further information: Please go to the IDPoor Program webpage at www.mop.gov.kh/Projects/IDPoor/tabid/154/Default.aspx

This District has not yet been covered by IDPoor